

Datasheet for ABIN2777203  
**anti-TFCP2 antibody (N-Term)**[Go to Product page](#)

## 2 Images

## Overview

Quantity:	100 µL
Target:	TFCP2
Binding Specificity:	N-Term
Reactivity:	Human, Mouse, Rat, Cow, Dog, Horse, Pig, Rabbit, Guinea Pig
Host:	Rabbit
Clonality:	Polyclonal
Conjugate:	This TFCP2 antibody is un-conjugated
Application:	Western Blotting (WB)

## Product Details

Immunogen:	The immunogen is a synthetic peptide directed towards the N terminal region of human TFCP2
Sequence:	YSMSDVLALP IFKQEESLP PDNENKILPF QYVLCATSP AVKLHDETLT
Predicted Reactivity:	Cow: 100%, Dog: 100%, Guinea Pig: 92%, Horse: 100%, Human: 100%, Mouse: 100%, Pig: 100%, Rabbit: 100%, Rat: 93%
Characteristics:	This is a rabbit polyclonal antibody against TFCP2. It was validated on Western Blot using a cell lysate as a positive control.
Purification:	Affinity Purified

## Target Details

Target:	TFCP2
---------	-------

## Target Details

Alternative Name:	TFCP2 ( <a href="#">TFCP2 Products</a> )
Background:	<p>TFCP2 binds a variety of cellular and viral promoters including fibrinogen, alpha-globin, SV40 and HIV-1 promoters. Activation of the alpha-globin promoter in erythroid cells is via synergistic interaction with UBP1. It also functions as part of the SSP (stage selector protein) complex. TFCP2 facilitates the interaction of the gamma-globin genes with enhancer elements contained in the locus control region in fetal erythroid cells. It interacts by binding to the stage selector element (SSE) in the proximal gamma-globin promoter.</p> <p>Alias Symbols: CP2, LBP-1C, LSF, SEF, TFCP2C, LBP1C, LSF1D</p> <p>Protein Interaction Partner: E2F8, NPEPL1, CDC73, MRPL11, KIAA1598, CBX8, TDRD1, CCDC94, ASAP3, C19orf73, FANCL, ZCCHC10, FAM64A, DNAJC27, TRAPPC12, POLL, TSPAN12, PLCB1, STMN2, MORF4L1, FARS2, EIF5B, PITPNM1, PPIG, GPANK1, BAG6, SUMO1, TCEA2, SDCBP, RBMS1, PSMD5, PPP3R2, PHF1, MRPL4</p> <p>Protein Size: 502</p>
Molecular Weight:	57 kDa
Gene ID:	7024
NCBI Accession:	<a href="#">NM_005653</a> , <a href="#">NP_005644</a>
UniProt:	<a href="#">Q12800</a>

## Application Details

Application Notes:	Optimal working dilutions should be determined experimentally by the investigator.
Comment:	Antigen size: 502 AA
Restrictions:	For Research Use only

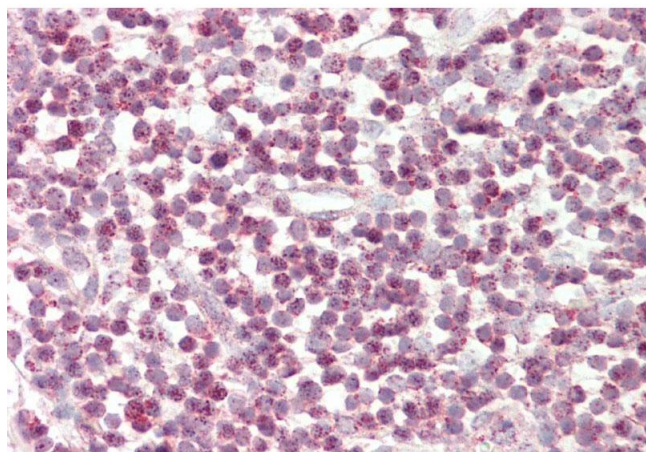
## Handling

Format:	Liquid
Concentration:	Lot specific
Buffer:	Liquid. Purified antibody supplied in 1x PBS buffer with 0.09 % (w/v) sodium azide and 2 % sucrose.
Preservative:	Sodium azide
Precaution of Use:	This product contains Sodium azide: a POISONOUS AND HAZARDOUS SUBSTANCE which should be handled by trained staff only.

## Handling

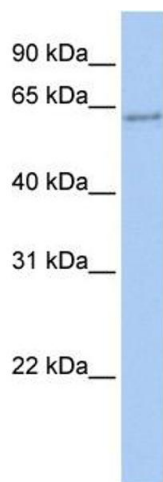
Handling Advice:	Avoid repeated freeze-thaw cycles.
Storage:	-20 °C
Storage Comment:	For short term use, store at 2-8°C up to 1 week. For long term storage, store at -20°C in small aliquots to prevent freeze-thaw cycles.

## Images



### Immunohistochemistry

**Image 1.** Rabbit Anti-TFCP2 antibody Catalog Number: ARP31073 Formalin Fixed Paraffin Embedded Tissue: Human Tonsil Primary antibody Concentration: 1:200 Secondary Antibody: Donkey anti-Rabbit-Cy3 Secondary Antibody Concentration: 1:200 Magnification: 20x Exposure Time: 0.5-2.0sec



### Western Blotting

**Image 2.** WB Suggested Anti-TFCP2 Antibody Titration: 0.2-1 ug/ml ELISA Titer: 1:312500 Positive Control: 293T cell lysate