



[Go to Product page](#)

Datasheet for ABIN2777204
anti-CTCF antibody (C-Term)

3 Images

Overview

Quantity:	100 µL
Target:	CTCF
Binding Specificity:	C-Term
Reactivity:	Human, Mouse, Rat, Cow, Dog, Rabbit, Pig, Guinea Pig
Host:	Rabbit
Clonality:	Polyclonal
Conjugate:	This CTCF antibody is un-conjugated
Application:	Western Blotting (WB)

Product Details

Immunogen:	The immunogen is a synthetic peptide directed towards the C-terminal region of Human CTCF
Sequence:	HADNCAGPDG VEGENGGETK KSKRGRKRKM RSKKEDSSDS ENAEPDLDDN
Predicted Reactivity:	Cow: 100%, Dog: 93%, Guinea Pig: 93%, Human: 100%, Mouse: 100%, Pig: 100%, Rabbit: 100%, Rat: 100%
Characteristics:	This is a rabbit polyclonal antibody against CTCF. It was validated on Western Blot.
Purification:	Affinity Purified

Target Details

Target:	CTCF
Alternative Name:	CTCF (CTCF Products)

Target Details

Background: This gene is a member of the BORIS + CTCF gene family and encodes a transcriptional regulator protein with 11 highly conserved zinc finger (ZF) domains. This nuclear protein is able to use different combinations of the ZF domains to bind different DNA target sequences and proteins. Depending upon the context of the site, the protein can bind a histone acetyltransferase (HAT)-containing complex and function as a transcriptional activator or bind a histone deacetylase (HDAC)-containing complex and function as a transcriptional repressor. If the protein is bound to a transcriptional insulator element, it can block communication between enhancers and upstream promoters, thereby regulating imprinted expression. Mutations in this gene have been associated with invasive breast cancers, prostate cancers, and Wilms' tumors.

Alias Symbols: -

Protein Interaction Partner: ZMYM4, UBC, EED, BMI1, KANSL1, CDK19, ZMYM2, CAND1, ZBTB33, TFAP4, SUMO1, SUMO2, SUMO3, SIRT7, TAF3, SMC3, POLR2A, SUZ12, Ctcf, HIST2H2AC, TOP2A, TAF1, NPM1, LMNA, KPNA4, KPNA2, H2AFZ, PARP1, TRB, RXRA, SMAD3, SIN3A, SMC1A, RAD21, YY1, THRB, SMAD4, HMGB1,

Protein Size: 727

Molecular Weight: 83 kDa

Gene ID: 10664

NCBI Accession: [NM_006565](#), [NP_006556](#)

UniProt: [P49711](#)

Application Details

Application Notes: Optimal working dilutions should be determined experimentally by the investigator.

Comment: Antigen size: 727 AA

Restrictions: For Research Use only

Handling

Format: Liquid

Concentration: Lot specific

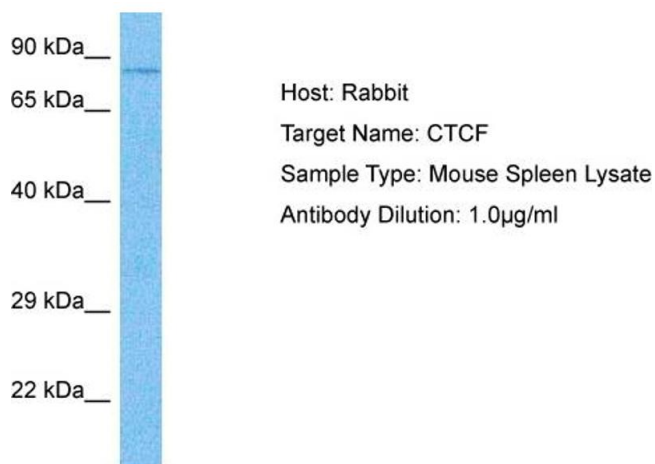
Buffer: Liquid. Purified antibody supplied in 1x PBS buffer with 0.09 % (w/v) sodium azide and 2 % sucrose.

Preservative: Sodium azide

Handling

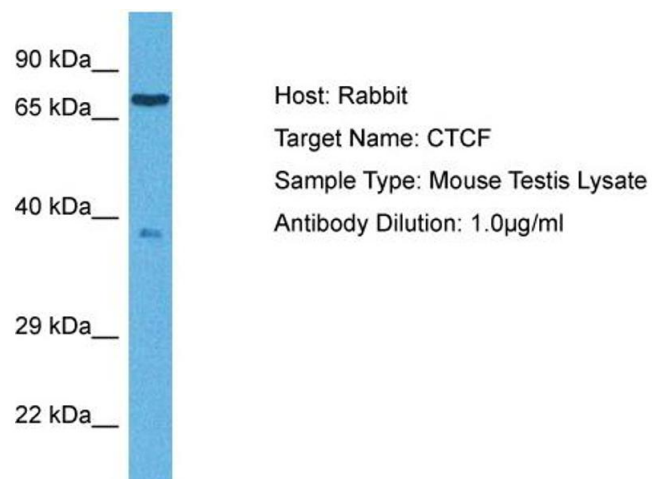
Precaution of Use:	This product contains Sodium azide: a POISONOUS AND HAZARDOUS SUBSTANCE which should be handled by trained staff only.
Handling Advice:	Avoid repeated freeze-thaw cycles.
Storage:	-20 °C
Storage Comment:	For short term use, store at 2-8°C up to 1 week. For long term storage, store at -20°C in small aliquots to prevent freeze-thaw cycles.

Images



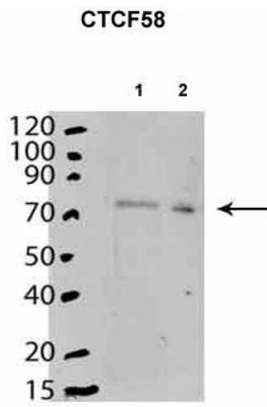
Western Blotting

Image 1. Host: Rabbit Target Name: CTCF Sample Tissue: Mouse Spleen Antibody Dilution: 1ug/ml



Western Blotting

Image 2. Host: Rabbit Target Name: CTCF Sample Tissue: Mouse Testis Antibody Dilution: 1ug/ml



See Immunoblot Data and Customer Feedback tab for more information.

Western Blotting

Image 3. Mouse stem cells expressed in cytoplasm and nucleoplasm. Primary antibody is 1:2000. 20ug lysate added to each lane. Lane 1: Mouse stem cell cytoplasm. Lane 2: Mouse stem cell nucleoplasm.