

Datasheet for ABIN2777205  
**anti-ELF1 antibody (N-Term)**[Go to Product page](#)

## 2 Images

## Overview

Quantity:	100 µL
Target:	ELF1
Binding Specificity:	N-Term
Reactivity:	Human, Mouse, Rabbit, Rat, Horse, Dog, Cow, Guinea Pig
Host:	Rabbit
Clonality:	Polyclonal
Conjugate:	This ELF1 antibody is un-conjugated
Application:	Western Blotting (WB), Immunohistochemistry (IHC)

## Product Details

Immunogen:	The immunogen is a synthetic peptide directed towards the N terminal region of human ELF1
Sequence:	VTLDGIPEVM ETQQVQEKYA DSPGASSPEQ PKRKKGRKTK PPRPDSPATT
Predicted Reactivity:	Cow: 100%, Dog: 100%, Guinea Pig: 100%, Horse: 100%, Human: 100%, Mouse: 93%, Rabbit: 100%, Rat: 100%
Characteristics:	This is a rabbit polyclonal antibody against ELF1. It was validated on Western Blot using a cell lysate as a positive control.
Purification:	Affinity Purified

## Target Details

Target:	ELF1
---------	------

## Target Details

Alternative Name:	ELF1 ( <a href="#">ELF1 Products</a> )
Background:	<p>ELF1 belongs to the ETS family. It contains 1 ETS DNA-binding domain. ELF1 is a transcription factor that activates the LYN and BLK promoters. It appears to be required for the T-cell-receptor-mediated trans activation of HIV-2 gene expression. ELF1 binds specifically to two purine-rich motifs in the HIV-2 enhancer.</p> <p>Alias Symbols: -</p> <p>Protein Interaction Partner: UBC, HOXC13, SUMO2, HMGA1, SP1, NFYB, RB1, REL, NFKB1, NFYA,</p> <p>Protein Size: 619</p>
Molecular Weight:	67 kDa
Gene ID:	1997
NCBI Accession:	<a href="#">NM_172373</a> , <a href="#">NP_758961</a>
UniProt:	<a href="#">P32519</a>

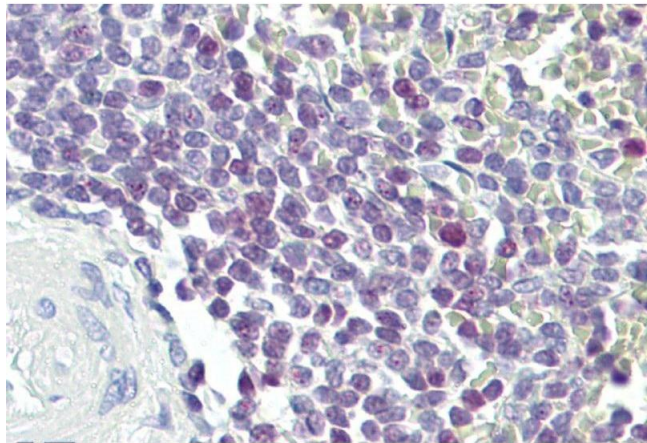
## Application Details

Application Notes:	Optimal working dilutions should be determined experimentally by the investigator.
Comment:	Antigen size: 619 AA
Restrictions:	For Research Use only

## Handling

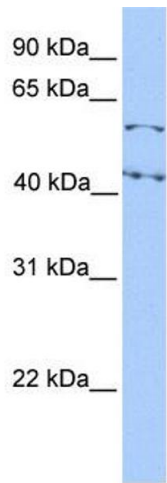
Format:	Liquid
Concentration:	Lot specific
Buffer:	Liquid. Purified antibody supplied in 1x PBS buffer with 0.09 % (w/v) sodium azide and 2 % sucrose.
Preservative:	Sodium azide
Precaution of Use:	This product contains Sodium azide: a POISONOUS AND HAZARDOUS SUBSTANCE which should be handled by trained staff only.
Handling Advice:	Avoid repeated freeze-thaw cycles.
Storage:	-20 °C
Storage Comment:	For short term use, store at 2-8°C up to 1 week. For long term storage, store at -20°C in small

aliquots to prevent freeze-thaw cycles.



Immunohistochemistry

**Image 1.** Spleen



Western Blotting

**Image 2.** WB Suggested Anti-ELF1 Antibody Titration: 0.2-1 ug/ml ELISA Titer: 1:1562500 Positive Control: Hela cell lysate