

Datasheet for ABIN2777213
anti-RBPJ antibody (C-Term)

5 Images

[Go to Product page](#)

Overview

Quantity:	100 µL
Target:	RBPJ
Binding Specificity:	C-Term
Reactivity:	Human, Mouse, Rat, Dog, Cow, Rabbit, Guinea Pig, Horse
Host:	Rabbit
Clonality:	Polyclonal
Conjugate:	This RBPJ antibody is un-conjugated
Application:	Western Blotting (WB), Immunohistochemistry (IHC), Immunoprecipitation (IP)

Product Details

Immunogen:	The immunogen is a synthetic peptide directed towards the C terminal region of human RBPSUH
Sequence:	RPHCSAAGAI LRANSSQVPP NESNTNSEGS YTNASTNSTS VTSSTATVVS
Predicted Reactivity:	Cow: 100%, Dog: 100%, Guinea Pig: 100%, Horse: 100%, Human: 100%, Mouse: 93%, Rabbit: 100%, Rat: 100%
Characteristics:	This is a rabbit polyclonal antibody against RBPJ. It was validated on Western Blot and immunohistochemistry.
Purification:	Affinity Purified

Target Details

Target:	RBPJ
---------	------

Target Details

Alternative Name:	RBPSUH (RBPJ Products)
Background:	<p>RBPSUH is a DNA binding protein that activates a full transcriptional response but only demonstrates partial anti-apoptotic activity. RTA-mediated redirection of RBPSUH activity from repression to activation is critical for lytic viral replication.</p> <p>Alias Symbols: CBF1, IGKJRB, IGKJRB1, KBF2, MGC61669, RBP-J, RBPJK, RBPSUH, SUH, csl</p> <p>Protein Interaction Partner: Notch1, MAML1, MED27, MYC, FHL1, CAMK4, PHF8, KDM1A, SMARCA4, APP, ORF50, UBB, HHV8GK18_gp81, BCL6B, KAT5, ELAVL1, SPEN, RUNX1T1, RUNX3, RPS6KA6, GSK3B, GADD45A, KDM5A, H, lid, KAT2B, SUFU, CIR1, SNW1, SND1, HDAC1, NCOR1, NCOR2, NOTCH3, NOTCH2, NOTCH4, HM</p> <p>Protein Size: 485</p>
Molecular Weight:	56 kDa
Gene ID:	3516
NCBI Accession:	NM_203283 , NP_976028
UniProt:	Q06330
Pathways:	Notch Signaling , Stem Cell Maintenance , Smooth Muscle Cell Migration

Application Details

Application Notes:	Optimal working dilutions should be determined experimentally by the investigator.
Comment:	Antigen size: 485 AA
Restrictions:	For Research Use only

Handling

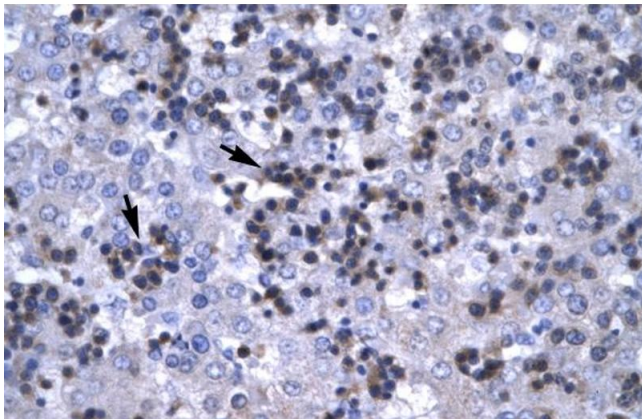
Format:	Liquid
Concentration:	Lot specific
Buffer:	Liquid. Purified antibody supplied in 1x PBS buffer with 0.09 % (w/v) sodium azide and 2 % sucrose.
Preservative:	Sodium azide
Precaution of Use:	This product contains Sodium azide: a POISONOUS AND HAZARDOUS SUBSTANCE which should be handled by trained staff only.
Handling Advice:	Avoid repeated freeze-thaw cycles.

Handling

Storage: -20 °C

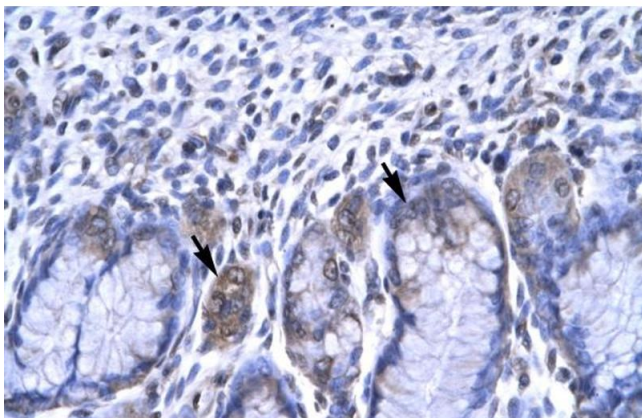
Storage Comment: For short term use, store at 2-8°C up to 1 week. For long term storage, store at -20°C in small aliquots to prevent freeze-thaw cycles.

Images



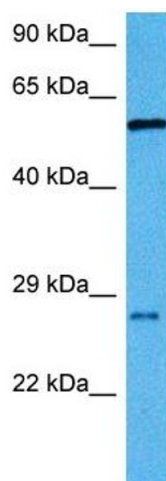
Immunohistochemistry

Image 1. Human Liver



Immunohistochemistry

Image 2. Human Stomach



Western Blotting

Image 3. Host: Mouse Target Name: RBPJ Sample Tissue: Mouse Liver Antibody Dilution: 1ug/ml

Please check the [product details page](#) for more images. Overall 5 images are available for ABIN2777213.