



[Go to Product page](#)

Datasheet for ABIN2777218
anti-E2F4 antibody (C-Term)

3 Images

Overview

Quantity:	100 µL
Target:	E2F4
Binding Specificity:	C-Term
Reactivity:	Human, Mouse, Rat, Cow, Dog, Horse, Rabbit, Guinea Pig, Zebrafish (Danio rerio)
Host:	Rabbit
Clonality:	Polyclonal
Conjugate:	This E2F4 antibody is un-conjugated
Application:	Western Blotting (WB), Immunohistochemistry (IHC)

Product Details

Immunogen:	The immunogen is a synthetic peptide directed towards the C terminal region of human E2F4
Sequence:	SSELLEELMS SEVFAPLLRL SPPPGDHDYI YNLDESEGVC DLFDVPVLNL
Predicted Reactivity:	Cow: 100%, Dog: 100%, Guinea Pig: 100%, Horse: 100%, Human: 100%, Mouse: 100%, Rabbit: 100%, Rat: 100%, Zebrafish: 100%
Characteristics:	This is a rabbit polyclonal antibody against E2F4. It was validated on Western Blot and immunohistochemistry.
Purification:	Affinity Purified

Target Details

Target:	E2F4
---------	------

Target Details

Alternative Name: [E2F4 \(E2F4 Products\)](#)

Background: The protein encoded by this gene is a member of the E2F family of transcription factors. The E2F family plays a crucial role in the control of cell cycle and action of tumor suppressor proteins. It is also a target of the transforming proteins of small DNA tumor viruses. The E2F proteins contain several evolutionally conserved domains found in most members of the family. These domains include a DNA binding domain, a dimerization domain which determines interaction with the differentiation regulated transcription factor proteins (DP), a transactivation domain enriched in acidic amino acids, and a tumor suppressor protein association domain which is embedded within the transactivation domain. This protein binds to all three of the tumor suppressor proteins pRB, p107 and p130, but with higher affinity to the last two. It also plays an important role in the suppression of proliferation-associated genes, and its gene mutation and increased expression may be associated with human cancer.

Alias Symbols: E2F-4

Protein Interaction Partner: RBL2, TFDP1, RBL1, RB1, XPO1, PCM1, HDAC1, POLR1D, CHMP2A, AP3S2, TRIM28, LIN9, ARID3A, NCOR2, HDAC3, AR, CEBPA, LIN54, LIN37, UBC, ATAD2, SIN3A, ASH2L, HCFC1, TRRAP, KAT2A, ID2, E2F1, KMT2A, ID3, SMAD3, NOLC1, TFDP2, NDN, SMAD2, BRCA1, RYBP, RNF144A, FHL

Protein Size: 413

Molecular Weight: 44 kDa

Gene ID: 1874

NCBI Accession: [NM_001950](#), [NP_001941](#)

UniProt: [Q16254](#)

Pathways: [Cell Division Cycle](#), [Mitotic G1-G1/S Phases](#), [Regulation of Cell Size](#)

Application Details

Application Notes: Optimal working dilutions should be determined experimentally by the investigator.

Comment: Antigen size: 413 AA

Restrictions: For Research Use only

Handling

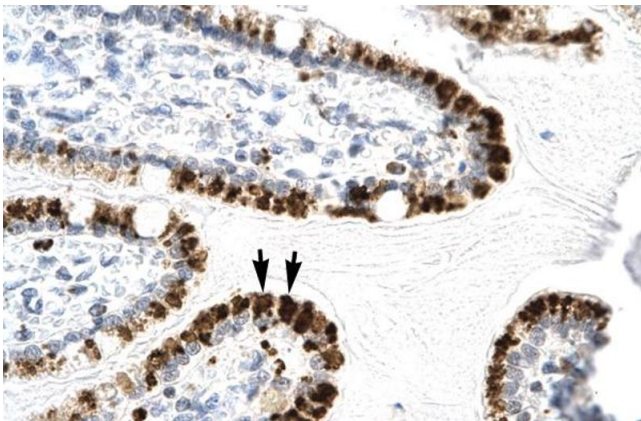
Format: Liquid

Concentration: Lot specific

Handling

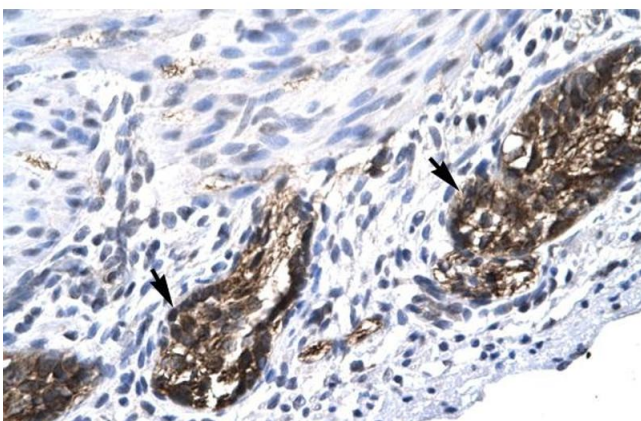
Buffer:	Liquid. Purified antibody supplied in 1x PBS buffer with 0.09 % (w/v) sodium azide and 2 % sucrose.
Preservative:	Sodium azide
Precaution of Use:	This product contains Sodium azide: a POISONOUS AND HAZARDOUS SUBSTANCE which should be handled by trained staff only.
Handling Advice:	Avoid repeated freeze-thaw cycles.
Storage:	-20 °C
Storage Comment:	For short term use, store at 2-8°C up to 1 week. For long term storage, store at -20°C in small aliquots to prevent freeze-thaw cycles.

Images



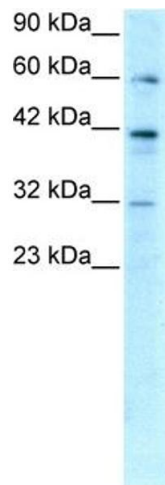
Immunohistochemistry

Image 1. Human Intestine



Immunohistochemistry

Image 2. Human Stomach



Western Blotting

Image 3. WB Suggested Anti-E2F4 Antibody Titration: 0.2-1 ug/ml ELISA Titer: 1:312500 Positive Control: HepG2 cell lysate