

Datasheet for ABIN2777222
anti-GABPA antibody (N-Term)[Go to Product page](#)

4 Images

Overview

Quantity:	100 µL
Target:	GABPA
Binding Specificity:	N-Term
Reactivity:	Human, Rat, Mouse, Dog, Cow, Horse, Guinea Pig, Rabbit
Host:	Rabbit
Clonality:	Polyclonal
Conjugate:	This GABPA antibody is un-conjugated
Application:	Western Blotting (WB)

Product Details

Immunogen:	The immunogen is a synthetic peptide directed towards the N-terminal region of Mouse Gabpa
Sequence:	MTKREAELI EIEIDGTEKA ECTEESIVEQ TYTPAECVSQ AIDINEPIGN
Predicted Reactivity:	Cow: 100%, Dog: 100%, Guinea Pig: 100%, Horse: 100%, Human: 100%, Mouse: 100%, Rabbit: 100%, Rat: 100%
Characteristics:	This is a rabbit polyclonal antibody against Gabpa. It was validated on Western Blot.
Purification:	Affinity Purified

Target Details

Target:	GABPA
Alternative Name:	Gabpa (GABPA Products)

Target Details

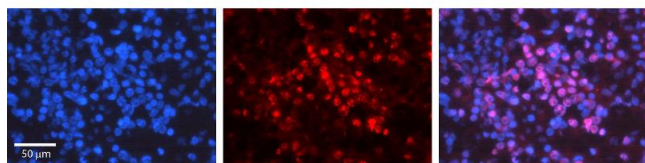
Background:	Gabpa is a transcription factor capable of interacting with purine rich repeats (GA repeats). Alias Symbols: GABPalpha Protein Interaction Partner: Crebbp, Il7r, Protein Size: 454
Molecular Weight:	51 kDa
Gene ID:	14390
NCBI Accession:	NM_008065 , NP_032091
UniProt:	Q00422
Pathways:	Myometrial Relaxation and Contraction

Application Details

Application Notes:	Optimal working dilutions should be determined experimentally by the investigator.
Comment:	Antigen size: 454 AA
Restrictions:	For Research Use only

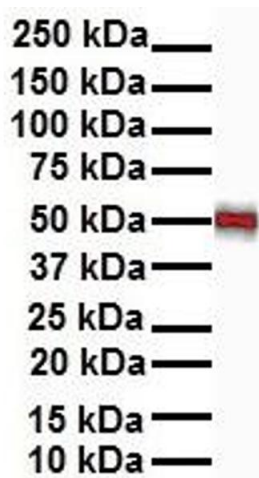
Handling

Format:	Liquid
Concentration:	Lot specific
Buffer:	Liquid. Purified antibody supplied in 1x PBS buffer with 0.09 % (w/v) sodium azide and 2 % sucrose.
Preservative:	Sodium azide
Precaution of Use:	This product contains Sodium azide: a POISONOUS AND HAZARDOUS SUBSTANCE which should be handled by trained staff only.
Handling Advice:	Avoid repeated freeze-thaw cycles.
Storage:	-20 °C
Storage Comment:	For short term use, store at 2-8°C up to 1 week. For long term storage, store at -20°C in small aliquots to prevent freeze-thaw cycles.



Immunohistochemistry

Image 1. Rabbit Anti-GABPA Antibody Catalog Number: ARP31186_P050 Formalin Fixed Paraffin Embedded Tissue: Human Lymph Node Tissue Observed Staining: Nucleus Primary Antibody Concentration: 1:100 Other Working Concentrations: 1:600 Secondary Antibody: Donkey anti-Rabbit-Cy3 Secondary Antibody Concentration: 1:200 Magnification: 20X Exposure Time: 0.5 - 2.0 sec



Western Blotting

Image 2. WB Suggested Anti-Gabpa antibody Titration: 1 ug/mL Sample Type: Human heart



Western Blotting

Image 3. WB Suggested Anti-Gabpa antibody Titration: 1 ug/mL Sample Type: Human liver

Please check the [product details page](#) for more images. Overall 4 images are available for ABIN2777222.