

Datasheet for ABIN2777241

anti-CEBPB antibody (C-Term)[Go to Product page](#)**2** Images

Overview

Quantity:	100 µL
Target:	CEBPB
Binding Specificity:	C-Term
Reactivity:	Human, Cow, Dog, Rabbit, Guinea Pig
Host:	Rabbit
Clonality:	Polyclonal
Conjugate:	This CEBPB antibody is un-conjugated
Application:	Western Blotting (WB)

Product Details

Immunogen:	The immunogen is a synthetic peptide directed towards the C terminal region of human CEBPB
Sequence:	ADAKAPPTAC YAGAAPAPSQ VKSKAKKTVD KHSDEYKIRR ERNNIAVRKS
Predicted Reactivity:	Cow: 100%, Dog: 100%, Guinea Pig: 100%, Human: 100%, Rabbit: 92%
Characteristics:	This is a rabbit polyclonal antibody against CEBPB. It was validated on Western Blot using a cell lysate as a positive control.
Purification:	Affinity Purified

Target Details

Target:	CEBPB
Alternative Name:	CEBPB (CEBPB Products)

Target Details

Background:	<p>The protein encoded by this intronless gene, CEBPB, is a bZIP transcription factor which can bind as a homodimer to certain DNA regulatory regions. It can also form heterodimers with the related proteins CEBP-alpha, CEBP-delta, and CEBP-gamma. The encoded protein is important in the regulation of genes involved in immune and inflammatory responses and has been shown to bind to the IL-1 response element in the IL-6 gene, as well as to regulatory regions of several acute-phase and cytokine genes. In addition, the encoded protein can bind the promoter and upstream element and stimulate the expression of the collagen type I gene.</p> <p>Alias Symbols: LAP, CRP2, TCF5, IL6DBP, NF-IL6, C/EBP-beta</p> <p>Protein Interaction Partner: CEBPA, UBC, EGR1, EP300, TP63, RB1, RELA, DAXX, CASP8, CASP1, SMARCA2, HDAC1, SMARCC1, SMARCB1, SMARCA4, SMARCA5, TAF9, ELAVL1, SUMO2, TRIM28, CEBPB, ATF3, CARM1, GSK3B, SUMO1, KAT2A, HDAC9, KAT2B, NCOR2, NCOR1, STAT3, PPARG, NRF1, CREBBP, ATF2, EHMT2, SP</p> <p>Protein Size: 345</p>
Molecular Weight:	36 kDa
Gene ID:	1051
NCBI Accession:	NM_005194 , NP_005185
UniProt:	P17676
Pathways:	Interferon-gamma Pathway , Autophagy , Brown Fat Cell Differentiation

Application Details

Application Notes:	Optimal working dilutions should be determined experimentally by the investigator.
Comment:	Antigen size: 345 AA
Restrictions:	For Research Use only

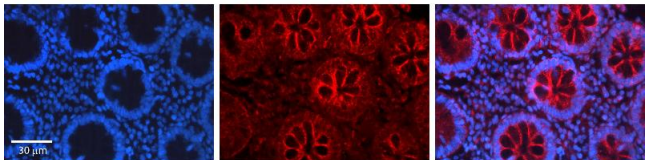
Handling

Format:	Liquid
Concentration:	Lot specific
Buffer:	Liquid. Purified antibody supplied in 1x PBS buffer with 0.09 % (w/v) sodium azide and 2 % sucrose.
Preservative:	Sodium azide
Precaution of Use:	This product contains Sodium azide: a POISONOUS AND HAZARDOUS SUBSTANCE which

Handling

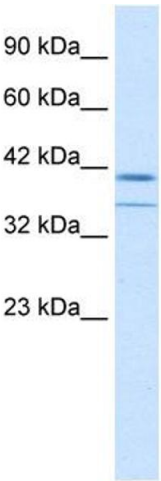
	should be handled by trained staff only.
Handling Advice:	Avoid repeated freeze-thaw cycles.
Storage:	-20 °C
Storage Comment:	For short term use, store at 2-8°C up to 1 week. For long term storage, store at -20°C in small aliquots to prevent freeze-thaw cycles.

Images



Immunohistochemistry

Image 1. Rabbit Anti-CEBPB Antibody Catalog Number: ARP31259_P050 Formalin Fixed Paraffin Embedded Tissue: Human Appendix (Colon) Tissue Observed Staining: Cytoplasm Primary Antibody Concentration: 1:100 Other Working Concentrations: N/A Secondary Antibody: Donkey anti-Rabbit-Cy3 Secondary Antibody Concentration: 1:200 Magnification: 20X Exposure Time: 0.5 - 2.0 sec



Western Blotting

Image 2. WB Suggested Anti-CEBPB Antibody Titration: 0.2-1 ug/ml ELISA Titer: 1:1562500 Positive Control: HepG2 cell lysate