

Datasheet for ABIN2777246
anti-FOSL2 antibody (Middle Region)[Go to Product page](#)

4 Images

Overview

Quantity:	100 µL
Target:	FOSL2
Binding Specificity:	Middle Region
Reactivity:	Human, Mouse, Rat, Dog, Cow, Guinea Pig, Horse, Rabbit, Zebrafish (Danio rerio)
Host:	Rabbit
Clonality:	Polyclonal
Conjugate:	This FOSL2 antibody is un-conjugated
Application:	Western Blotting (WB), Immunohistochemistry (IHC)

Product Details

Immunogen:	The immunogen is a synthetic peptide directed towards the middle region of human FOSL2
Sequence:	PMRSGGGSVG AVVVKQEPLE EDSPSSSSAG LDKAQRSVIK PISIAGGFY
Predicted Reactivity:	Cow: 100%, Dog: 100%, Guinea Pig: 100%, Horse: 100%, Human: 100%, Mouse: 92%, Rabbit: 100%, Rat: 100%, Zebrafish: 91%
Characteristics:	This is a rabbit polyclonal antibody against FOSL2. It was validated on Western Blot and immunohistochemistry.
Purification:	Affinity Purified

Target Details

Target:	FOSL2
---------	-------

Target Details

Alternative Name:	FOSL2 (FOSL2 Products)
Background:	<p>The Fos gene family consists of 4 members: FOS, FOSB, FOSL1, and FOSL2, which encode leucine zipper proteins that can dimerize with proteins of the JUN family, thereby forming the transcription factor complex AP-1. The FOS proteins have been implicated as regulators of cell proliferation, differentiation, and transformation.</p> <p>Alias Symbols: FRA2</p> <p>Protein Interaction Partner: GMCL1, GOPC, LUZP4, CREB5, DNAJA3, TRAF1, FHL3, DDIT3, JUNB, UBC, SRA1, ATF1, EP300, SUMO2, JUND, JUN,</p> <p>Protein Size: 326</p>
Molecular Weight:	35 kDa
Gene ID:	2355
NCBI Accession:	NM_005253 , NP_005244
UniProt:	P15408
Pathways:	Feeding Behaviour , Photoperiodism

Application Details

Application Notes:	Optimal working dilutions should be determined experimentally by the investigator.
Comment:	Antigen size: 326 AA
Restrictions:	For Research Use only

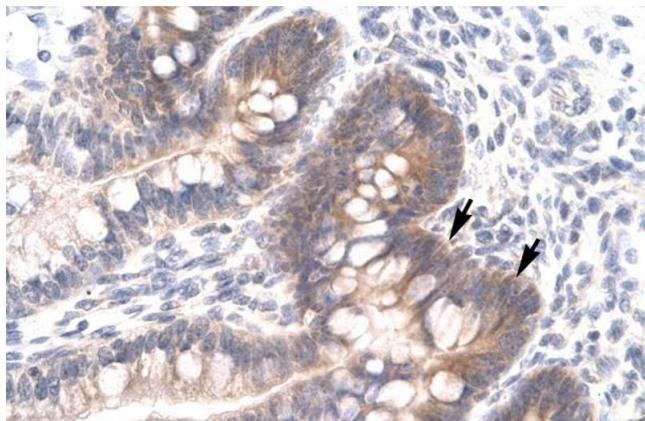
Handling

Format:	Liquid
Concentration:	Lot specific
Buffer:	Liquid. Purified antibody supplied in 1x PBS buffer with 0.09 % (w/v) sodium azide and 2 % sucrose.
Preservative:	Sodium azide
Precaution of Use:	This product contains Sodium azide: a POISONOUS AND HAZARDOUS SUBSTANCE which should be handled by trained staff only.
Handling Advice:	Avoid repeated freeze-thaw cycles.
Storage:	-20 °C

Handling

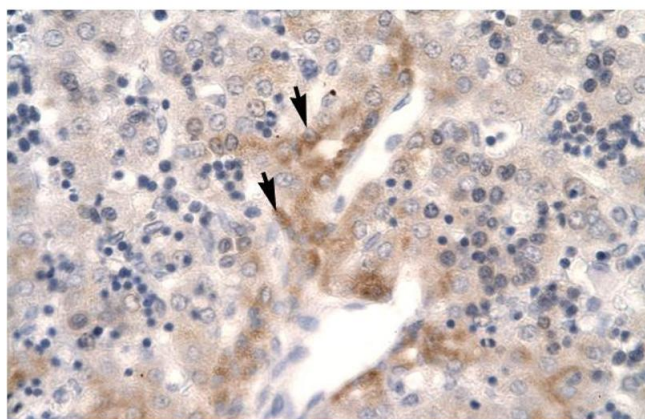
Storage Comment: For short term use, store at 2-8°C up to 1 week. For long term storage, store at -20°C in small aliquots to prevent freeze-thaw cycles.

Images



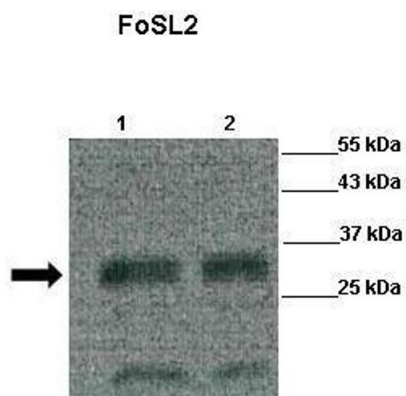
Immunohistochemistry

Image 1. Human Intestine



Immunohistochemistry

Image 2. Human Liver



Western Blotting

Image 3. Lanes: Lane 1: 15ul purified zebrafish FoSL2 protein Lane 2: 10ul purified zebrafish FoSL2 protein Primary Antibody Dilution: 1:500 Secondary Antibody: Goat anti-rabbit HRP Secondary Antibody Dilution: 1:5000 Gene Name: FOSL2 Submitted by: Leila Jahangiri. Massachusetts General Hospital, Harvard Medical School

See Immunoblot 2 Data and Customer Feedback for more Information

Please check the [product details page](#) for more images. Overall 4 images are available for ABIN2777246.