

Datasheet for ABIN2777253

anti-SNAPC2 antibody (N-Term)



[Go to Product page](#)

1 Image

Overview

Quantity:	100 µL
Target:	SNAPC2
Binding Specificity:	N-Term
Reactivity:	Human, Cow, Guinea Pig, Rabbit, Rat, Dog, Mouse, Pig
Host:	Rabbit
Clonality:	Polyclonal
Conjugate:	This SNAPC2 antibody is un-conjugated
Application:	Western Blotting (WB)

Product Details

Immunogen:	The immunogen is a synthetic peptide directed towards the N terminal region of human SNAPC2
Sequence:	LQARQGQPEP DATELARELR GRSEAEIRVF LQQLKGRVAR EAIQKVHPGG
Predicted Reactivity:	Cow: 85%, Dog: 92%, Guinea Pig: 83%, Human: 100%, Mouse: 85%, Pig: 85%, Rabbit: 85%, Rat: 85%
Characteristics:	This is a rabbit polyclonal antibody against SNAPC2. It was validated on Western Blot using a cell lysate as a positive control.
Purification:	Affinity Purified

Target Details

Target:	SNAPC2
---------	--------

Target Details

Alternative Name:	SNAPC2 (SNAPC2 Products)
Background:	<p>SNAPc is involved in transcription by two types of polymerases, it is required for transcription of both the RNA polymerase II and III small-nuclear RNA genes and binds specifically to the proximal sequence element PSE, a non-TATA-box basal promoter element common to these two types of genes. In addition, SNAPc is composed of at least three TAFs, SNAP43, SNAP45 and SNAP50.</p> <p>Alias Symbols: PTFdelta, SNAP45, PTFDELTA</p> <p>Protein Interaction Partner: TBP, SNAPC4, SNAPC3, SNAPC1,</p> <p>Protein Size: 334</p>
Molecular Weight:	35 kDa
Gene ID:	6618
NCBI Accession:	NM_003083 , NP_003074
UniProt:	Q13487
Pathways:	Chromatin Binding

Application Details

Application Notes:	Optimal working dilutions should be determined experimentally by the investigator.
Comment:	Antigen size: 334 AA
Restrictions:	For Research Use only

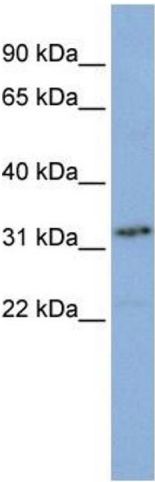
Handling

Format:	Liquid
Concentration:	Lot specific
Buffer:	Liquid. Purified antibody supplied in 1x PBS buffer with 0.09 % (w/v) sodium azide and 2 % sucrose.
Preservative:	Sodium azide
Precaution of Use:	This product contains Sodium azide: a POISONOUS AND HAZARDOUS SUBSTANCE which should be handled by trained staff only.
Handling Advice:	Avoid repeated freeze-thaw cycles.
Storage:	-20 °C

Handling

Storage Comment: For short term use, store at 2-8°C up to 1 week. For long term storage, store at -20°C in small aliquots to prevent freeze-thaw cycles.

Images



Western Blotting

Image 1. WB Suggested Anti-SNAPC2 Antibody Titration: 0.2-1 ug/ml ELISA Titer: 1:1562500 Positive Control: Jurkat cell lysate