

Datasheet for ABIN2777259
anti-CYHR1 antibody (Middle Region)



[Go to Product page](#)

1 Image

Overview

Quantity:	100 µL
Target:	CYHR1
Binding Specificity:	Middle Region
Reactivity:	Human, Mouse, Rat, Cow
Host:	Rabbit
Clonality:	Polyclonal
Conjugate:	This CYHR1 antibody is un-conjugated
Application:	Western Blotting (WB)

Product Details

Immunogen:	The immunogen is a synthetic peptide corresponding to a region of Mouse
Sequence:	LAPGPSTHED CLAGAWVATV IGLPLLAFFDF HWVNGDRSSA NLLLGGGMVL
Predicted Reactivity:	Cow: 93%, Human: 100%, Mouse: 100%, Rat: 100%
Characteristics:	This is a rabbit polyclonal antibody against Cyhr1. It was validated on Western Blot.
Purification:	Affinity Purified

Target Details

Target:	CYHR1
Alternative Name:	Cyhr1 (CYHR1 Products)
Background:	The function of Cyhr1 remains unknown.

Target Details

Alias Symbols: 1110031M01Rik, AU042374, Chrp

Protein Interaction Partner: Lgals3,

Protein Size: 192

Molecular Weight: 20 kDa

Gene ID: 54151

NCBI Accession: [NM_180962](#), [NP_851293](#)

Application Details

Application Notes: Optimal working dilutions should be determined experimentally by the investigator.

Comment: Antigen size: 192 AA

Restrictions: For Research Use only

Handling

Format: Liquid

Concentration: Lot specific

Buffer: Liquid. Purified antibody supplied in 1x PBS buffer with 0.09 % (w/v) sodium azide and 2 % sucrose.

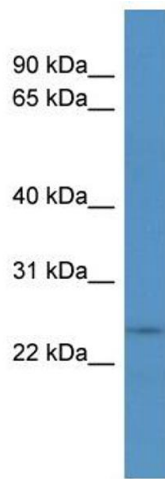
Preservative: Sodium azide

Precaution of Use: This product contains Sodium azide: a POISONOUS AND HAZARDOUS SUBSTANCE which should be handled by trained staff only.

Handling Advice: Avoid repeated freeze-thaw cycles.

Storage: -20 °C

Storage Comment: For short term use, store at 2-8°C up to 1 week. For long term storage, store at -20°C in small aliquots to prevent freeze-thaw cycles.



Western Blotting

Image 1. WB Suggested Anti-Cyhr1 Antibody Titration: 0.2-1 ug/ml ELISA Titer: 1:12500 Positive Control: Mouse Heart