

Datasheet for ABIN2777264
anti-EN2 antibody (C-Term)[Go to Product page](#)

5 Images

1 Publication

Overview

| | |
|----------------------|--|
| Quantity: | 100 µL |
| Target: | EN2 |
| Binding Specificity: | C-Term |
| Reactivity: | Human, Mouse, Rat, Dog, Guinea Pig, Horse, Zebrafish (Danio rerio) |
| Host: | Rabbit |
| Clonality: | Polyclonal |
| Conjugate: | This EN2 antibody is un-conjugated |
| Application: | Western Blotting (WB), Immunohistochemistry (IHC) |

Product Details

| | |
|-----------------------|---|
| Immunogen: | The immunogen is a synthetic peptide directed towards the C-terminal region of Human EN2 |
| Sequence: | NESQIKIWFQ NKRAKIKKAT GNKNTLAVHL MAQGLYNHST TAKEGKSDSE |
| Predicted Reactivity: | Dog: 100%, Guinea Pig: 100%, Horse: 100%, Human: 100%, Mouse: 100%, Rat: 100%, Zebrafish: 85% |
| Characteristics: | This is a rabbit polyclonal antibody against EN2. It was validated on Western Blot. |
| Purification: | Affinity Purified |

Target Details

| | |
|-------------------|--------------------------------------|
| Target: | EN2 |
| Alternative Name: | EN2 (EN2 Products) |

Target Details

| | |
|-------------------|---|
| Background: | Homeobox-containing genes are thought to have a role in controlling development. The human engrailed homologs 1 and 2 encode homeodomain-containing proteins and have been implicated in the control of pattern formation during development of the central nervous system. Alias Symbols: - Protein Interaction Partner: FOXA2, Protein Size: 333 |
| Molecular Weight: | 34 kDa |
| Gene ID: | 2020 |
| NCBI Accession: | NM_001427 , NP_001418 |
| UniProt: | P19622 |

Application Details

| | |
|--------------------|--|
| Application Notes: | Optimal working dilutions should be determined experimentally by the investigator. |
| Comment: | Antigen size: 333 AA |
| Restrictions: | For Research Use only |

Handling

| | |
|--------------------|---|
| Format: | Liquid |
| Concentration: | Lot specific |
| Buffer: | Liquid. Purified antibody supplied in 1x PBS buffer with 0.09 % (w/v) sodium azide and 2 % sucrose. |
| Preservative: | Sodium azide |
| Precaution of Use: | This product contains Sodium azide: a POISONOUS AND HAZARDOUS SUBSTANCE which should be handled by trained staff only. |
| Handling Advice: | Avoid repeated freeze-thaw cycles. |
| Storage: | -20 °C |
| Storage Comment: | For short term use, store at 2-8°C up to 1 week. For long term storage, store at -20°C in small aliquots to prevent freeze-thaw cycles. |

Product cited in: Lazrek, Goffard, Schanen, Karquel, Bocket, Lion, Devaux, Hedouin, Gosset, Hober: "Detection of hepatitis C virus antibodies and RNA among medicolegal autopsy cases in Northern France." in: **Diagnostic microbiology and infectious disease**, Vol. 55, Issue 1, pp. 55-8, (2006) ([PubMed](#)).

Images



EN2

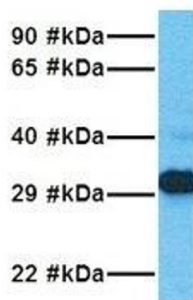
Western Blotting

Image 1. WB Suggested Anti-EN2 Antibody Titration:

0.05ug/ml

ELISA Titer: 1:2500

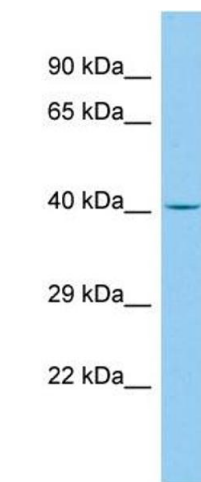
Positive Control: Human cerebellum



Western Blotting

Image 2. Host: Rabbit Target Name: EN2 Sample Tissue:

Human Jurkat Antibody Dilution: 1.0ug/ml



Western Blotting

Image 3. WB Suggested Anti-EN2 Antibody Titration:

0.05ug/ml ELISA Titer: 1:2500 Positive Control: Human cerebellum

Images

Please check the [product details page](#) for more images. Overall 5 images are available for ABIN2777264.