

Datasheet for ABIN2777266
anti-FOSL1 antibody (Middle Region)[Go to Product page](#)

2 Images

Overview

Quantity:	100 µL
Target:	FOSL1
Binding Specificity:	Middle Region
Reactivity:	Human, Rat, Mouse, Dog, Cow, Rabbit, Horse, Guinea Pig, Zebrafish (Danio rerio), Goat
Host:	Rabbit
Clonality:	Polyclonal
Conjugate:	This FOSL1 antibody is un-conjugated
Application:	Western Blotting (WB), Immunohistochemistry (IHC)

Product Details

Immunogen:	The immunogen is a synthetic peptide directed towards the middle region of human FOSL1
Sequence:	EKSGLQREIE ELQKQKERLE LVLEAHRPIC KIPEGAKEGD TGSTSGTSSP
Predicted Reactivity:	Cow: 100%, Dog: 100%, Goat: 85%, Guinea Pig: 100%, Horse: 100%, Human: 100%, Mouse: 100%, Rabbit: 100%, Rat: 100%, Zebrafish: 85%
Characteristics:	This is a rabbit polyclonal antibody against FOSL1. It was validated on Western Blot using a cell lysate as a positive control.
Purification:	Affinity Purified

Target Details

Target:	FOSL1
---------	-------

Target Details

Alternative Name:	FOSL1 (FOSL1 Products)
Background:	<p>The Fos gene family consists of 4 members: FOS, FOSB, FOSL1, and FOSL2. These genes encode leucine zipper proteins that can dimerize with proteins of the JUN family, thereby forming the transcription factor complex AP-1. The FOS proteins have been implicated in various cellular processes.</p> <p>Alias Symbols: FRA1, fra-1, FRA</p> <p>Protein Interaction Partner: NME7, CREB5, USF1, LDOC1, JUNB, MAFB, MAF, JUN, DDIT3, ATF2, CEBPG, CEBPE, CEBPA, ATF4, ATF3, PARVG, WFDC1, TAB2, ATXN1, MYC, KPNA1, PSMC3, EP300, CREBBP, TRIM24, UBC, HDAC1, CALCOCO1, ATF1, CREB1, SRF, ELK1,</p> <p>Protein Size: 271</p>
Molecular Weight:	29 kDa
Gene ID:	8061
NCBI Accession:	NM_005438 , NP_005429
UniProt:	P15407

Application Details

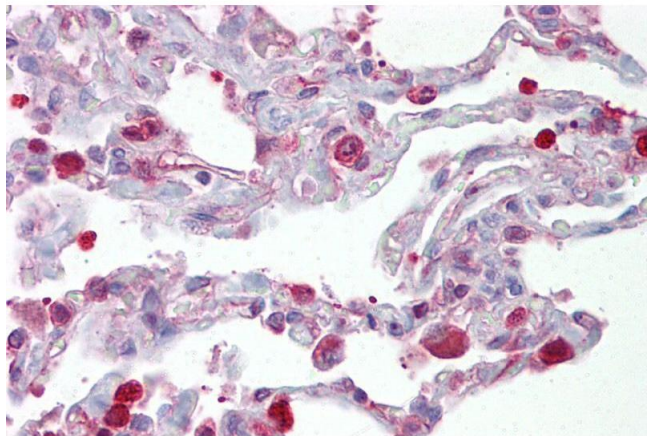
Application Notes:	Optimal working dilutions should be determined experimentally by the investigator.
Comment:	Antigen size: 271 AA
Restrictions:	For Research Use only

Handling

Format:	Liquid
Concentration:	Lot specific
Buffer:	Liquid. Purified antibody supplied in 1x PBS buffer with 0.09 % (w/v) sodium azide and 2 % sucrose.
Preservative:	Sodium azide
Precaution of Use:	This product contains Sodium azide: a POISONOUS AND HAZARDOUS SUBSTANCE which should be handled by trained staff only.
Handling Advice:	Avoid repeated freeze-thaw cycles.
Storage:	-20 °C
Storage Comment:	For short term use, store at 2-8°C up to 1 week. For long term storage, store at -20°C in small

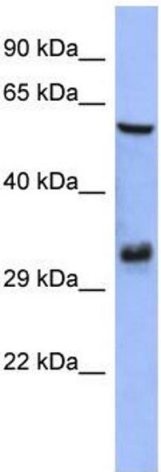
aliquots to prevent freeze-thaw cycles.

Images



Immunohistochemistry

Image 1. Immunohistochemistry with Lung tissue at an antibody concentration of 5µg/ml using anti-FOSL1 antibody (ARP31378_P050)



Western Blotting

Image 2. WB Suggested Anti-FOSL1 Antibody Titration: 0.2-1 ug/ml ELISA Titer: 1:12500 Positive Control: HepG2 cell lysate