

Datasheet for ABIN2777275
anti-MSX1 antibody (Middle Region)[Go to Product page](#)

2 Images

1 Publication

Overview

Quantity:	100 µL
Target:	MSX1
Binding Specificity:	Middle Region
Reactivity:	Human, Mouse, Rat, Cow, Dog, Guinea Pig, Horse
Host:	Rabbit
Clonality:	Polyclonal
Conjugate:	This MSX1 antibody is un-conjugated
Application:	Western Blotting (WB), Immunohistochemistry (IHC)

Product Details

Immunogen:	The immunogen is a synthetic peptide directed towards the middle region of human MSX1
Sequence:	SLGAPDAPSS PRPLGHFSVG GLLKLPEDAL VKAESPEKPE RTPWMQSPRF
Predicted Reactivity:	Cow: 100%, Dog: 100%, Guinea Pig: 100%, Horse: 100%, Human: 100%, Mouse: 86%, Rat: 100%
Characteristics:	This is a rabbit polyclonal antibody against MSX1. It was validated on Western Blot and immunohistochemistry.
Purification:	Protein A purified

Target Details

Target:	MSX1
Alternative Name:	MSX1 (MSX1 Products)

Target Details

Background:	<p>Slightly proximal to the Huntington disease locus, the human MSX1 gene is deleted in patients with Wolf-Hirschhorn syndrome. This gene is also called HOX7. The Msx family of vertebrate HOX genes was originally isolated by homology to the Drosophila msh (muscle segment homeo box) gene. This is a candidate gene for human cleft palate.</p> <p>Alias Symbols: HOX7, HYD1, STHAG1</p> <p>Protein Interaction Partner: MED19, NMNAT1, ING4, UBC, TLE2, PIAS1, PAX3, TLE4, LHX2, SUMO2, RGS7, SUMO1, TLE1, AES, CREBBP, TBP, TAF1, TP53, SP1, PAX9, POU2F1, MSX1, MSX2, HOXC8, DLX5, DLX2,</p> <p>Protein Size: 297</p>
Molecular Weight:	31 kDa
Gene ID:	4487
NCBI Accession:	NM_002448 , NP_002439
UniProt:	P28360
Pathways:	Regulation of Muscle Cell Differentiation , Positive Regulation of Response to DNA Damage Stimulus

Application Details

Application Notes:	Optimal working dilutions should be determined experimentally by the investigator.
Comment:	Antigen size: 297 AA
Restrictions:	For Research Use only

Handling

Format:	Liquid
Concentration:	Lot specific
Buffer:	Liquid. Purified antibody supplied in 1x PBS buffer with 0.09 % (w/v) sodium azide and 2 % sucrose.
Preservative:	Sodium azide
Precaution of Use:	This product contains Sodium azide: a POISONOUS AND HAZARDOUS SUBSTANCE which should be handled by trained staff only.
Handling Advice:	Avoid repeated freeze-thaw cycles.

Handling

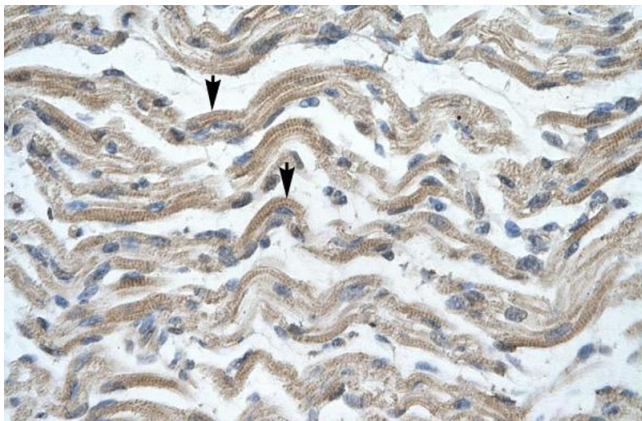
Storage: -20 °C

Storage Comment: For short term use, store at 2-8°C up to 1 week. For long term storage, store at -20°C in small aliquots to prevent freeze-thaw cycles.

Publications

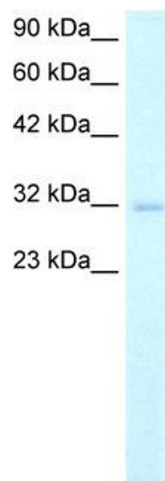
Product cited in: Coyne, Gambling, Boucher, Carson, Johnson: "Role of claudin interactions in airway tight junctional permeability." in: **American journal of physiology. Lung cellular and molecular physiology**, Vol. 285, Issue 5, pp. L1166-78, (2003) ([PubMed](#)).

Validation report #102749 for Immunohistochemistry (IHC)



Immunohistochemistry

Image 1. Human Muscle



Western Blotting

Image 2. WB Suggested Anti-MSX1 Antibody Titration: 2.0ug/ml ELISA Titer: 1:62500 Positive Control: Human Kidney