

Datasheet for ABIN2777276  
**anti-Msx2/Hox8 antibody (N-Term)**[Go to Product page](#)

## 3 Images

## Overview

Quantity:	100 µL
Target:	Msx2/Hox8 (Msx2)
Binding Specificity:	N-Term
Reactivity:	Human, Mouse, Rat, Dog, Cow, Horse, Rabbit
Host:	Rabbit
Clonality:	Polyclonal
Conjugate:	This Msx2/Hox8 antibody is un-conjugated
Application:	Western Blotting (WB), Immunofluorescence (IF)

## Product Details

Immunogen:	The immunogen is a synthetic peptide directed towards the n terminal region of human MSX2
Sequence:	MASPSKGNDL FSPDEEGPAV VAGPGPGPGG AEGAAEERRV KVSSLPFSVE
Predicted Reactivity:	Cow: 100%, Dog: 100%, Horse: 100%, Human: 100%, Mouse: 91%, Rabbit: 91%, Rat: 91%
Characteristics:	This is a rabbit polyclonal antibody against MSX2. It was validated on Western Blot using a cell lysate as a positive control.
Purification:	Affinity Purified

## Target Details

Target:	Msx2/Hox8 (Msx2)
Alternative Name:	MSX2 ( <a href="#">Msx2 Products</a> )

## Target Details

Background:	<p>MSX2 probable play a morphogenetic role. MSX2 may play a role in limb-pattern formation. In osteoblasts, MSX2 suppresses transcription driven by the osteocalcin FGF response element (OCFRE). This gene encodes a member of the muscle segment homeobox gene family. The encoded protein is a transcriptional repressor whose normal activity may establish a balance between survival and apoptosis of neural crest-derived cells required for proper craniofacial morphogenesis. The encoded protein may also have a role in promoting cell growth under certain conditions and may be an important target for the RAS signaling pathways. Mutations in this gene are associated with parietal foramina 1 and craniosynostosis type 2. Publication Note: This RefSeq record includes a subset of the publications that are available for this gene. Please see the Entrez Gene record to access additional publications.</p> <p>Alias Symbols: CRS2, FPP, HOX8, MSH, PFM, PFM1</p> <p>Protein Interaction Partner: ATXN1, PIAS2, UBC, XRCC5, XRCC6, ZDHHC2, TLE2, TLE1, PPARG, POU2AF1, NR3C1, POLR3D, SPEN, ZBTB17, RUNX2, DLX5, MAGED1, GTF2F2, GTF2F1, MSX1, DLX2, MSX2, CEBPA, PITX2,</p> <p>Protein Size: 267</p>
-------------	--

Molecular Weight:	29 kDa
-------------------	--------

Gene ID:	4488
----------	------

NCBI Accession:	<a href="#">NM_002449</a> , <a href="#">NP_002440</a>
-----------------	---

UniProt:	<a href="#">P35548</a>
----------	------------------------

## Application Details

Application Notes:	Optimal working dilutions should be determined experimentally by the investigator.
--------------------	--

Comment:	Antigen size: 267 AA
----------	----------------------

Restrictions:	For Research Use only
---------------	-----------------------

## Handling

Format:	Liquid
---------	--------

Concentration:	Lot specific
----------------	--------------

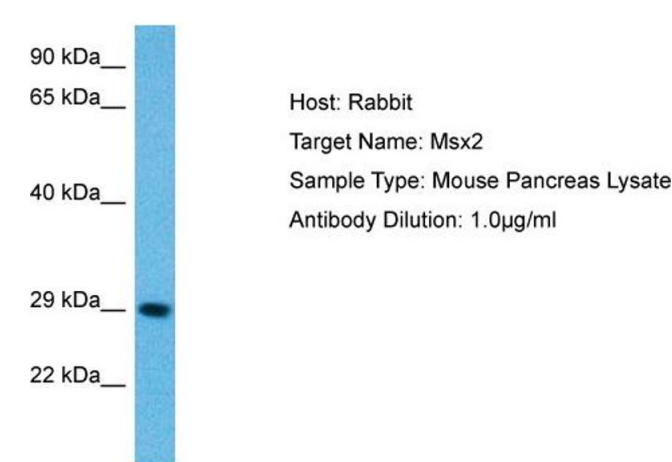
Buffer:	Liquid. Purified antibody supplied in 1x PBS buffer with 0.09 % (w/v) sodium azide and 2 % sucrose.
---------	---

Preservative:	Sodium azide
---------------	--------------

## Handling

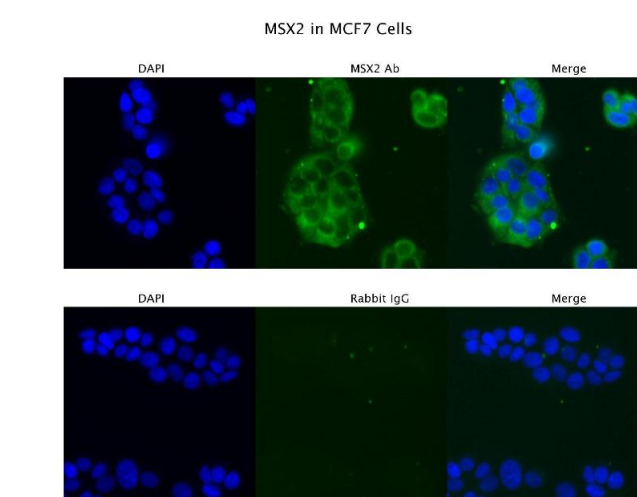
Precaution of Use:	This product contains Sodium azide: a POISONOUS AND HAZARDOUS SUBSTANCE which should be handled by trained staff only.
Handling Advice:	Avoid repeated freeze-thaw cycles.
Storage:	-20 °C
Storage Comment:	For short term use, store at 2-8°C up to 1 week. For long term storage, store at -20°C in small aliquots to prevent freeze-thaw cycles.

## Images



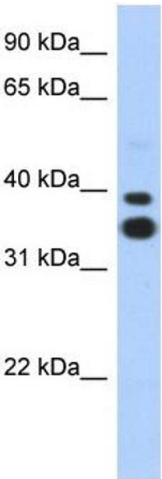
**Western Blotting**

**Image 1.** Host: Mouse Target Name: MSX2 Sample Tissue: Mouse Pancreas Antibody Dilution: 1ug/ml



**Immunofluorescence**

**Image 2.** Sample Type : MCF7 Primary Antibody Dilution: 4 ug/ml Secondary Antibody : Anti-rabbit Alexa 546 Secondary Antibody Dilution: 2 ug/ml Gene Name : MSX2



Western Blotting

**Image 3.** WB Suggested Anti-MSX2 Antibody Titration: 0.2-1 ug/ml ELISA Titer: 1:62500 Positive Control: Transfected 293T