

Datasheet for ABIN2777279
anti-MXI1 antibody (Middle Region)[Go to Product page](#)

4 Images

Overview

| | |
|----------------------|--|
| Quantity: | 100 µL |
| Target: | MXI1 |
| Binding Specificity: | Middle Region |
| Reactivity: | Human, Mouse, Rat, Dog, Cow, Guinea Pig, Rabbit, Zebrafish (Danio rerio), Saccharomyces cerevisiae |
| Host: | Rabbit |
| Clonality: | Polyclonal |
| Conjugate: | This MXI1 antibody is un-conjugated |
| Application: | Western Blotting (WB), Immunohistochemistry (IHC) |

Product Details

| | |
|-----------------------|---|
| Immunogen: | The immunogen is a synthetic peptide directed towards the middle region of human MXI1 |
| Sequence: | LNKAKAHIKK LEEAERKSQH QLENLEREQR FLKWRLEQLQ GPQEMERIRM |
| Predicted Reactivity: | Cow: 100%, Dog: 100%, Guinea Pig: 100%, Human: 100%, Mouse: 100%, Rabbit: 100%, Rat: 100%, Yeast: 75%, Zebrafish: 79% |
| Characteristics: | This is a rabbit polyclonal antibody against MXI1. It was validated on Western Blot and immunohistochemistry. |
| Purification: | Affinity Purified |

Target Details

| | |
|---------|------|
| Target: | MXI1 |
|---------|------|

Target Details

Alternative Name: MXI1 ([MXI1 Products](#))

Background: Expression of the c-myc gene, which produces an oncogenic transcription factor, is tightly regulated in normal cells but is frequently deregulated in human cancers. The MXI1 gene encodes a transcriptional repressor protein thought to negatively regulate MYC function, and is therefore a potential tumor suppressor. This protein inhibits the transcriptional activity of MYC by competing for MAX, another basic helix-loop-helix protein that binds to MYC and is required for its function. Defects in MXI1 are frequently found in patients with prostate tumors. Expression of the c-myc gene, which produces an oncogenic transcription factor, is tightly regulated in normal cells but is frequently deregulated in human cancers. The protein encoded by this gene is a transcriptional repressor thought to negatively regulate MYC function, and is therefore a potential tumor suppressor. This protein inhibits the transcriptional activity of MYC by competing for MAX, another basic helix-loop-helix protein that binds to MYC and is required for its function. Defects in this gene are frequently found in patients with prostate tumors. Three alternatively spliced transcripts encoding different isoforms have been described. Additional alternatively spliced transcripts may exist but the products of these transcripts have not been verified experimentally.

Alias Symbols: MAD2, MGC43220, MXD2, MXI, bHLHc11

Protein Interaction Partner: NOTCH2NL, KRTAP10-3, KRTAP10-8, KRTAP10-5, KRTAP10-9, KRTAP10-7, KRT40, RPL23AP32, CALCOCO2, MAX, ENTPD5, UBC, APP, CDC20, BUB1B, SIN3B, SIN3A, SMC3, MYC,

Protein Size: 295

Molecular Weight: 26 kDa

Gene ID: 4601

NCBI Accession: [NM_130439](#), [NP_569157](#)

UniProt: [P50539](#)

Pathways: [Maintenance of Protein Location](#)

Application Details

Application Notes: Optimal working dilutions should be determined experimentally by the investigator.

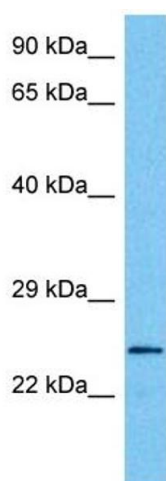
Comment: Antigen size: 295 AA

Restrictions: For Research Use only

Handling

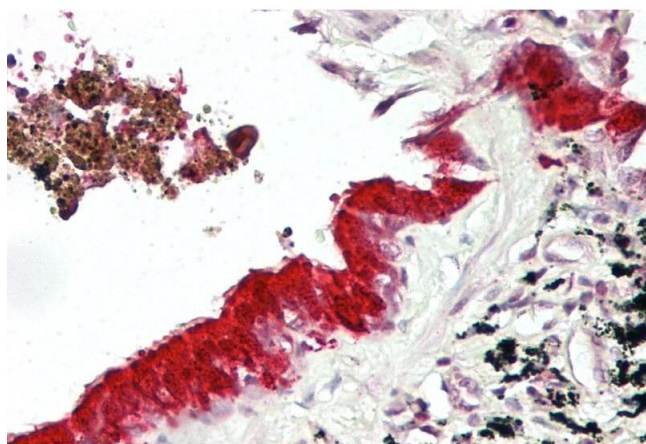
| | |
|--------------------|---|
| Format: | Liquid |
| Concentration: | Lot specific |
| Buffer: | Liquid. Purified antibody supplied in 1x PBS buffer with 0.09 % (w/v) sodium azide and 2 % sucrose. |
| Preservative: | Sodium azide |
| Precaution of Use: | This product contains Sodium azide: a POISONOUS AND HAZARDOUS SUBSTANCE which should be handled by trained staff only. |
| Handling Advice: | Avoid repeated freeze-thaw cycles. |
| Storage: | -20 °C |
| Storage Comment: | For short term use, store at 2-8°C up to 1 week. For long term storage, store at -20°C in small aliquots to prevent freeze-thaw cycles. |

Images



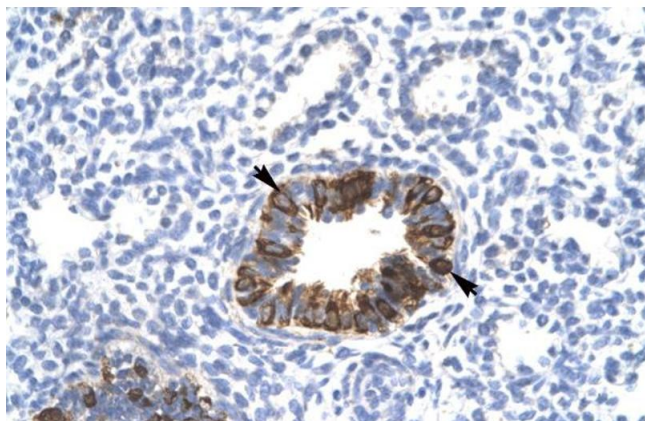
Western Blotting

Image 1. Host: Mouse Target Name: MXI1 Sample Tissue: Mouse Brain Antibody Dilution: 1ug/ml



Immunohistochemistry

Image 2. IHC Suggested Anti-MXI1 antibody Titration: 5ug/ml Positive Control: Lung, respiratory epithelium



Immunohistochemistry

Image 3. Rabbit Anti-MXI1 Antibody Catalog Number: ARP31403 Paraffin Embedded Tissue: Human Lung Cellular Data: Epithelial cells of bronchiole Antibody Concentration: 4.0-8.0 ug/ml Magnification: 400X

Please check the [product details page](#) for more images. Overall 4 images are available for ABIN2777279.