

Datasheet for ABIN2777282  
**anti-MYF6 antibody (Middle Region)**



[Go to Product page](#)

1 Image

## Overview

|                      |  |
|----------------------|--|
| Quantity:            | 100 µL   |
| Target:              | MYF6   |
| Binding Specificity: | Middle Region  |
| Reactivity:          | Human, Mouse, Rat, Cow, Goat, Horse, Sheep, Pig, Dog, Guinea Pig, Rabbit |
| Host:                | Rabbit   |
| Clonality:           | Polyclonal   |
| Conjugate:           | This MYF6 antibody is un-conjugated                                      |
| Application:         | Western Blotting (WB)  |

## Product Details

|                       |   |
|-----------------------|---|
| Immunogen:            | The immunogen is a synthetic peptide directed towards the middle region of human MYF6   |
| Sequence:             | LQDLLHRLDQ QEKMQLGVD PFSYRPKQEN LEGADFLRTC SSQWPSVSDH   |
| Predicted Reactivity: | Cow: 100%, Dog: 92%, Goat: 100%, Guinea Pig: 93%, Horse: 100%, Human: 100%, Mouse: 79%, Pig: 100%, Rabbit: 93%, Rat: 93%, Sheep: 100% |
| Characteristics:      | This is a rabbit polyclonal antibody against MYF6. It was validated on Western Blot using a cell lysate as a positive control.        |
| Purification:         | Affinity Purified   |

## Target Details

|         |      |
|---------|------|
| Target: | MYF6 |
|---------|------|

## Target Details

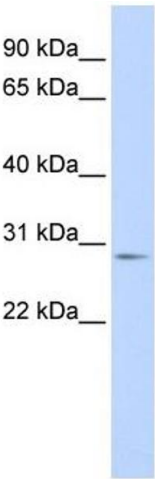
|                   |  |
|-------------------|--|
| Alternative Name: | MYF6 ( <a href="#">MYF6 Products</a> )   |
| Background:       | <p>MYF6 is a part of the myogenic basic helix-loop-helix family of transcription factors, and can activate the muscle differentiation program.</p> <p>Alias Symbols: MRF4, CNM3, myf-6, bHLHc4</p> <p>Protein Interaction Partner: ID1, CSRP3, ID2, ID3, CALM3, CALM1, ELSPBP1, TCF3,</p> <p>Protein Size: 242</p> |
| Molecular Weight: | 27 kDa   |
| Gene ID:          | 4618   |
| NCBI Accession:   | <a href="#">NM_002469</a> , <a href="#">NP_002460</a>  |
| UniProt:          | <a href="#">P23409</a>   |
| Pathways:         | <a href="#">Regulation of Muscle Cell Differentiation</a>  |

## Application Details

|                    |  |
|--------------------|--|
| Application Notes: | Optimal working dilutions should be determined experimentally by the investigator. |
| Comment:           | Antigen size: 242 AA   |
| Restrictions:      | For Research Use only  |

## Handling

|                    |   |
|--------------------|---|
| Format:            | Liquid  |
| Concentration:     | Lot specific  |
| Buffer:            | Liquid. Purified antibody supplied in 1x PBS buffer with 0.09 % (w/v) sodium azide and 2 % sucrose.                                     |
| Preservative:      | Sodium azide  |
| Precaution of Use: | This product contains Sodium azide: a POISONOUS AND HAZARDOUS SUBSTANCE which should be handled by trained staff only.                  |
| Handling Advice:   | Avoid repeated freeze-thaw cycles.  |
| Storage:           | -20 °C  |
| Storage Comment:   | For short term use, store at 2-8°C up to 1 week. For long term storage, store at -20°C in small aliquots to prevent freeze-thaw cycles. |



**Western Blotting**

**Image 1.** WB Suggested Anti-MYF6 Antibody Titration: 0.2-1 ug/ml ELISA Titer: 1:312500 Positive Control: 293T cell lysate