

Datasheet for ABIN2777285

anti-POU1F1 antibody (C-Term)



[Go to Product page](#)

2 Images

1 Publication

Overview

Quantity:	100 µL
Target:	POU1F1
Binding Specificity:	C-Term
Reactivity:	Human, Mouse, Rat, Dog, Cow, Goat, Horse, Rabbit, Sheep, Guinea Pig, Zebrafish (Danio rerio)
Host:	Rabbit
Clonality:	Polyclonal
Conjugate:	This POU1F1 antibody is un-conjugated
Application:	Western Blotting (WB), Immunohistochemistry (IHC)

Product Details

Immunogen:	The immunogen is a synthetic peptide directed towards the C terminal region of human POU1F1
Sequence:	QEIMRMAEEL NLEKEVVRVW FCNRRQREKR VKTSLNQSLEF SISKEHLECR
Predicted Reactivity:	Cow: 100%, Dog: 100%, Goat: 100%, Guinea Pig: 100%, Horse: 100%, Human: 100%, Mouse: 100%, Rabbit: 100%, Rat: 100%, Sheep: 100%, Zebrafish: 86%
Characteristics:	This is a rabbit polyclonal antibody against POU1F1. It was validated on Western Blot and immunohistochemistry.
Purification:	Affinity Purified

Target Details

Target:	POU1F1
---------	--------

Target Details

Alternative Name:	POU1F1 (POU1F1 Products)
Background:	<p>PIT1 is a pituitary-specific transcription factor responsible for pituitary development and hormone expression in mammals and is a member of the POU family of transcription factors that regulate mammalian development. The POU family is so named because the first 3 members identified were PIT1 and OCT1 of mammals, and Unc-86 of <i>C. elegans</i>. PIT1 contains 2 protein domains, termed POU-specific and POU-homeo, which are both necessary for high affinity DNA binding on genes encoding growth hormone and prolactin. PIT1 is also important for regulation of the genes encoding prolactin and thyroid-stimulating hormone beta subunit by thyrotropin-releasing hormone and cyclic AMP.</p> <p>Alias Symbols: PIT1, CPHD1, GHF-1, Pit-1, POU1F1a</p> <p>Protein Interaction Partner: CEBPD, NCOR1, CREBBP, MED1, GATA2, NR1I3, NR1I2, PITX1, JUN, ETS1, NR3C1, VDR, PPARG, PPARA,</p> <p>Protein Size: 291</p>
Molecular Weight:	33 kDa
Gene ID:	5449
NCBI Accession:	NM_000306 , NP_000297
UniProt:	P28069
Pathways:	Regulation of Carbohydrate Metabolic Process

Application Details

Application Notes:	Optimal working dilutions should be determined experimentally by the investigator.
Comment:	Antigen size: 291 AA
Restrictions:	For Research Use only

Handling

Format:	Liquid
Concentration:	Lot specific
Buffer:	Liquid. Purified antibody supplied in 1x PBS buffer with 0.09 % (w/v) sodium azide and 2 % sucrose.
Preservative:	Sodium azide
Precaution of Use:	This product contains Sodium azide: a POISONOUS AND HAZARDOUS SUBSTANCE which

Handling

should be handled by trained staff only.

Handling Advice: Avoid repeated freeze-thaw cycles.

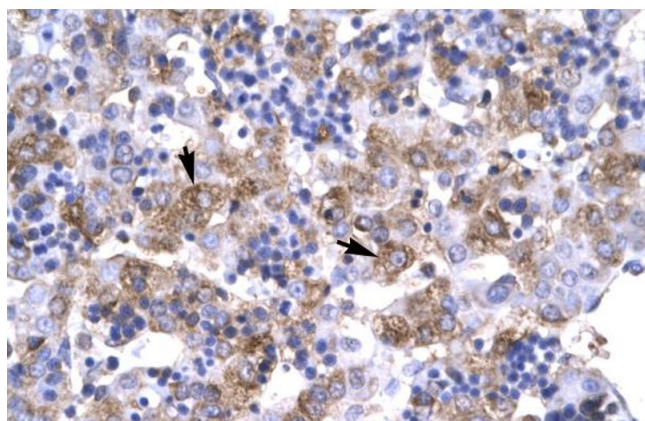
Storage: -20 °C

Storage Comment: For short term use, store at 2-8°C up to 1 week. For long term storage, store at -20°C in small aliquots to prevent freeze-thaw cycles.

Publications

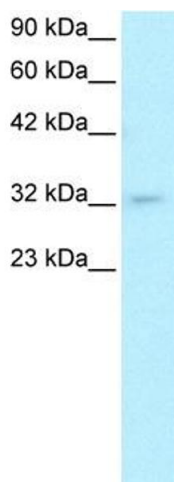
Product cited in: Ursini, Cavalleri, Fazio, Angrisano, Iacovelli, Porcelli, Maddalena, Punzi, Mancini, Gelao, Romano, Masellis, Calabrese, Rampino, Taurisano, Di Giorgio, Keller, Tarantini, Sinibaldi, Quarto et al.: "BDNF rs6265 methylation and genotype interact on risk for schizophrenia. ..." in: **Epigenetics**, Vol. 11, Issue 1, pp. 11-23, (2016) ([PubMed](#)).

Images



Immunohistochemistry

Image 1. Rabbit Anti-POU1F1 Antibody Catalog Number: ARP31419 Paraffin Embedded Tissue: Human Liver Cellular Data: Hepatocyte Antibody Concentration: 4.0-8.0 ug/ml Magnification: 400X



Western Blotting

Image 2. WB Suggested Anti-POU1F1 Antibody Titration: 0.2-1 ug/ml ELISA Titer: 1:12500 Positive Control: HepG2 cell lysate