

Datasheet for ABIN2777288
anti-SPIB antibody (C-Term)[Go to Product page](#)

2 Images

Overview

Quantity:	100 µL
Target:	SPIB
Binding Specificity:	C-Term
Reactivity:	Human, Mouse, Rat, Dog, Rabbit, Cow, Guinea Pig, Horse, Zebrafish (Danio rerio)
Host:	Rabbit
Clonality:	Polyclonal
Conjugate:	This SPIB antibody is un-conjugated
Application:	Western Blotting (WB)

Product Details

Immunogen:	The immunogen is a synthetic peptide directed towards the C terminal region of human SPIB
Sequence:	GQQKGNRKRM TYQKLARALR NYAKTGEIRK VKRKLTYQFD SALLPAVRRRA
Predicted Reactivity:	Cow: 100%, Dog: 100%, Guinea Pig: 100%, Horse: 100%, Human: 100%, Mouse: 100%, Rabbit: 100%, Rat: 100%, Zebrafish: 100%
Characteristics:	This is a rabbit polyclonal antibody against SPIB. It was validated on Western Blot using a cell lysate as a positive control.
Purification:	Affinity Purified

Target Details

Target:	SPIB
---------	------

Target Details

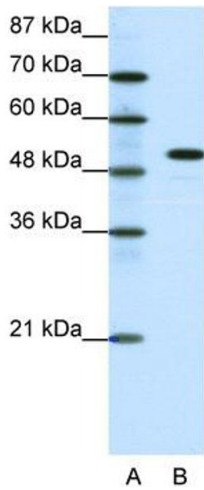
Alternative Name:	SPIB (SPIB Products)
Background:	<p>SPI1 (MIM 165170) and SPIB are members of a subfamily of ETS (see ETS1, MIM 164720) transcription factors. ETS proteins share a conserved ETS domain that mediates specific DNA binding. SPIB and SPI1 bind to a purine-rich sequence, the PU box (5-prime-GAGGAA-3-prime).</p> <p>Alias Symbols: SPI-B</p> <p>Protein Interaction Partner: TMEM37, SSB, GATA1, IRF4, MAPK3, MAPK8, CREBBP, TBP, CEBPB, RB1, SPI1, JUN, CSNK2A2, CSNK2A1, SPIB, E2F4, E2F3, E2F2, E2F1,</p> <p>Protein Size: 177</p>
Molecular Weight:	19 kDa
Gene ID:	6689
NCBI Accession:	NM_003121 , NP_003112
UniProt:	Q01892

Application Details

Application Notes:	Optimal working dilutions should be determined experimentally by the investigator.
Comment:	Antigen size: 177 AA
Restrictions:	For Research Use only

Handling

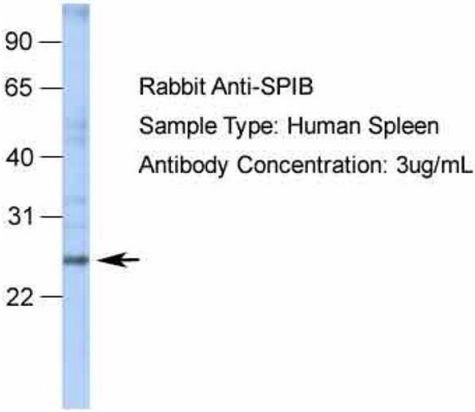
Format:	Liquid
Concentration:	Lot specific
Buffer:	Liquid. Purified antibody supplied in 1x PBS buffer with 0.09 % (w/v) sodium azide and 2 % sucrose.
Preservative:	Sodium azide
Precaution of Use:	This product contains Sodium azide: a POISONOUS AND HAZARDOUS SUBSTANCE which should be handled by trained staff only.
Handling Advice:	Avoid repeated freeze-thaw cycles.
Storage:	-20 °C
Storage Comment:	For short term use, store at 2-8°C up to 1 week. For long term storage, store at -20°C in small aliquots to prevent freeze-thaw cycles.



Western Blotting

Image 1. WB Suggested Anti-SPIB Antibody Titration: 0.2-1 ug/ml ELISA Titer: 1:62500 Positive Control: Daudi cell lysate SPIB is supported by BioGPS gene expression data to be expressed in Daudi

SPIB



Western Blotting

Image 2. WB Suggested Anti-SPIB Antibody Titration: 3 ug/ml ELISA Titer: 1:62500 Positive Control: spleen tissue lysate SPIB is supported by RNA-seq data to be expressed in spleen