

Datasheet for ABIN2777291  
**anti-TAL1 antibody (N-Term)**[Go to Product page](#)

2 Images

1 Publication

## Overview

Quantity:	100 µL
Target:	TAL1
Binding Specificity:	N-Term
Reactivity:	Human, Mouse, Rat, Dog, Cow, Rabbit, Pig
Host:	Rabbit
Clonality:	Polyclonal
Conjugate:	This TAL1 antibody is un-conjugated
Application:	Western Blotting (WB)

## Product Details

Immunogen:	The immunogen is a synthetic peptide directed towards the N terminal region of human TAL1
Sequence:	TERPPSEAAR SDPQLEGRDA AEASMAPPHL VLLNGVAKET SRAAAAEPV
Predicted Reactivity:	Cow: 85%, Dog: 85%, Human: 100%, Mouse: 92%, Pig: 92%, Rabbit: 92%, Rat: 85%
Characteristics:	This is a rabbit polyclonal antibody against TAL1. It was validated on Western Blot using a cell lysate as a positive control.
Purification:	Affinity Purified

## Target Details

Target:	TAL1
Alternative Name:	TAL1 ( <a href="#">TAL1 Products</a> )

## Target Details

Background:	<p>TAL1 is implicated in the genesis of hemopoietic malignancies. It may play an important role in hemopoietic differentiation. It also serves as a positive regulator of erythroid differentiation</p> <p>Alias Symbols: SCL, TCL5, tal-1, bHLHa17</p> <p>Protein Interaction Partner: ELSPBP1, SIN3A, KAT2B, EP300, HOXB9, DRG1, CHD3, ZHX1, STUB1, UBC, RB1, SSBP2, SSBP3, RCOR1, KDM1A, LDB1, TCF12, TCF3, RBBP7, LYL1, HDAC2, HDAC1, CHD4, CBFA2T3, RUNX1, SUPT16H, TAL1, CDK9, TRIM33, SUV39H1, SATB1, TRIM27, NCAPG2, MAPK3, SP1, LMO1, LMO2, GA</p> <p>Protein Size: 331</p>
Molecular Weight:	34 kDa
Gene ID:	6886
NCBI Accession:	<a href="#">NM_003189</a> , <a href="#">NP_003180</a>
UniProt:	<a href="#">P17542</a>
Pathways:	<a href="#">Stem Cell Maintenance</a>

## Application Details

Application Notes:	Optimal working dilutions should be determined experimentally by the investigator.
Comment:	Antigen size: 331 AA
Restrictions:	For Research Use only

## Handling

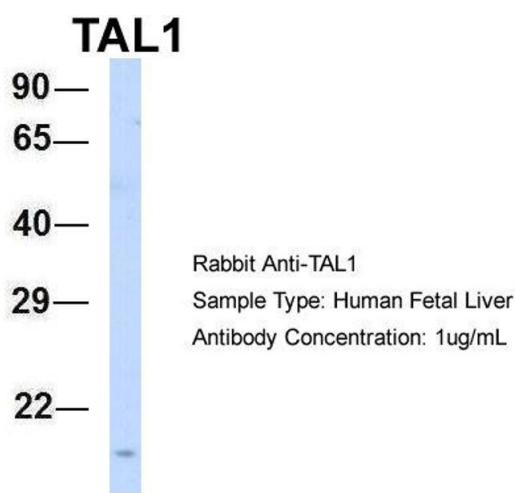
Format:	Liquid
Concentration:	Lot specific
Buffer:	Liquid. Purified antibody supplied in 1x PBS buffer with 0.09 % (w/v) sodium azide and 2 % sucrose.
Preservative:	Sodium azide
Precaution of Use:	This product contains Sodium azide: a POISONOUS AND HAZARDOUS SUBSTANCE which should be handled by trained staff only.
Handling Advice:	Avoid repeated freeze-thaw cycles.
Storage:	-20 °C
Storage Comment:	For short term use, store at 2-8°C up to 1 week. For long term storage, store at -20°C in small

aliquots to prevent freeze-thaw cycles.

Publications

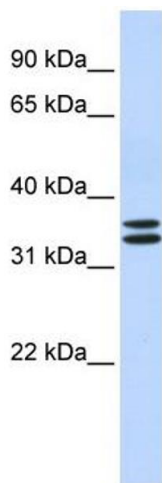
Product cited in: Coyne, Gambling, Boucher, Carson, Johnson: "Role of claudin interactions in airway tight junctional permeability." in: **American journal of physiology. Lung cellular and molecular physiology**, Vol. 285, Issue 5, pp. L1166-78, (2003) ([PubMed](#)).

Validation report #102749 for Immunohistochemistry (IHC)



**Western Blotting**

**Image 1.** Host: Rabbit Target Name: TAL1 Sample Type: Human Fetal Liver Antibody Dilution: 1.0ug/ml



**Western Blotting**

**Image 2.** WB Suggested Anti-TAL1 Antibody Titration: 0.2-1 ug/ml ELISA Titer: 1:62500 Positive Control: Human brain