

Datasheet for ABIN2777294
anti-POU6F1 antibody (Middle Region)[Go to Product page](#)

3 Images

Overview

Quantity:	100 µL
Target:	POU6F1
Binding Specificity:	Middle Region
Reactivity:	Human, Mouse, Rat, Cow, Dog, Rabbit, Horse, Zebrafish (Danio rerio)
Host:	Rabbit
Clonality:	Polyclonal
Conjugate:	This POU6F1 antibody is un-conjugated
Application:	Western Blotting (WB), Immunohistochemistry (IHC)

Product Details

Immunogen:	The immunogen is a synthetic peptide directed towards the middle region of human POU6F1
Sequence:	YFEKNPLPTG QEITEIAKEL NYDREVVRVW FCNRRQTLKN TSKLNVFQIP
Predicted Reactivity:	Cow: 100%, Dog: 100%, Horse: 100%, Human: 100%, Mouse: 100%, Rabbit: 100%, Rat: 100%, Zebrafish: 92%
Characteristics:	This is a rabbit polyclonal antibody against POU6F1. It was validated on Western Blot and immunohistochemistry.
Purification:	Affinity Purified

Target Details

Target:	POU6F1
---------	--------

Target Details

Alternative Name:	POU6F1 (POU6F1 Products)
Background:	<p>The POU6F1 gene encodes a protein that is part of a family of transcription factors which exhibit distinct temporal and spatial patterns of expression.</p> <p>Alias Symbols: BRN5, MPOU, TCFB1</p> <p>Protein Size: 301</p>
Molecular Weight:	33 kDa
Gene ID:	5463
NCBI Accession:	NM_002702 , NP_002693
UniProt:	Q14863

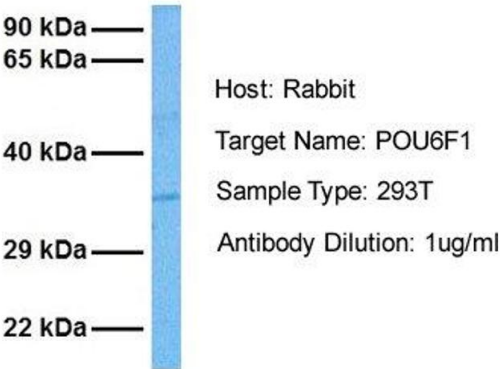
Application Details

Application Notes:	Optimal working dilutions should be determined experimentally by the investigator.
Comment:	Antigen size: 301 AA
Restrictions:	For Research Use only

Handling

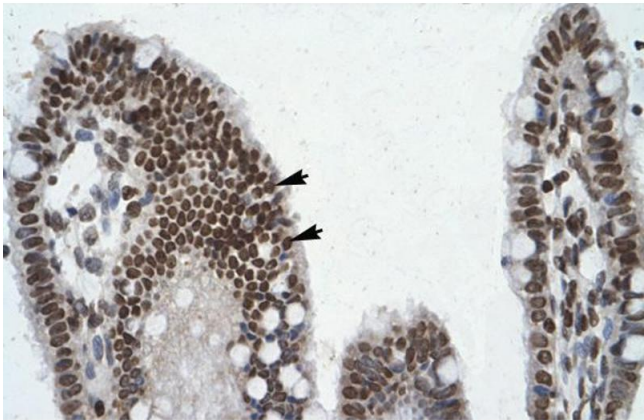
Format:	Liquid
Concentration:	Lot specific
Buffer:	Liquid. Purified antibody supplied in 1x PBS buffer with 0.09 % (w/v) sodium azide and 2 % sucrose.
Preservative:	Sodium azide
Precaution of Use:	This product contains Sodium azide: a POISONOUS AND HAZARDOUS SUBSTANCE which should be handled by trained staff only.
Handling Advice:	Avoid repeated freeze-thaw cycles.
Storage:	-20 °C
Storage Comment:	For short term use, store at 2-8°C up to 1 week. For long term storage, store at -20°C in small aliquots to prevent freeze-thaw cycles.

POU6F1



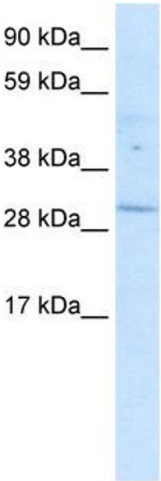
Western Blotting

Image 1. Host: Rabbit Target Name: POU6F1 Sample
Tissue: Human 293T Antibody Dilution: 1.0ug/ml



Immunohistochemistry

Image 2. Human Intestine



Western Blotting

Image 3. WB Suggested Anti-POU6F1 Antibody Titration:
0.12ug/ml ELISA Titer: 1:312500 Positive Control: Human
kidney nuclear extract