

Datasheet for ABIN2777295
anti-GTF2E2 antibody (N-Term)[Go to Product page](#)

2 Images

Overview

Quantity:	100 µL
Target:	GTF2E2
Binding Specificity:	N-Term
Reactivity:	Human, Mouse, Rat, Cow, Dog, Goat, Guinea Pig, Horse, Rabbit, Zebrafish (Danio rerio)
Host:	Rabbit
Clonality:	Polyclonal
Conjugate:	This GTF2E2 antibody is un-conjugated
Application:	Western Blotting (WB), Immunohistochemistry (IHC)

Product Details

Immunogen:	The immunogen is a synthetic peptide directed towards the N terminal region of human GTF2E2
Sequence:	VEHGGSSGSK QNSDHSNGSF NLKALSGSSG YKFGVLAKIV NYMKTRHQRG
Predicted Reactivity:	Cow: 100%, Dog: 100%, Goat: 79%, Guinea Pig: 100%, Horse: 100%, Human: 100%, Mouse: 93%, Rabbit: 100%, Rat: 100%, Zebrafish: 85%
Characteristics:	This is a rabbit polyclonal antibody against GTF2E2. It was validated on Western Blot using a cell lysate as a positive control.
Purification:	Affinity Purified

Target Details

Target:	GTF2E2
---------	--------

Target Details

Alternative Name:	GTF2E2 (GTF2E2 Products)
Background:	<p>GTF2E2 alpha's interaction with RNA polymerase II is subsequent to the entry of RNA polymerase II into the transcription cycle</p> <p>Alias Symbols: FE, TF2E2, TFIIE-B</p> <p>Protein Interaction Partner: UBC, PBDC1, SEC24D, MMS19, MCC, CDK7, GTF2E1, APP, tat, ATF7IP, EXOC4, UBR5, MTA2, TPR, HSP90AB1, HNRNPA1, DNM2, SUPT16H, CCNH, GTF2B, NUP62, KLF5, MNAT1, SND1, GTF2A1, TBP, XPA, GTF2H1, GTF2F2, GTF2F1, MDM2, ERCC6, ERCC3, JUN, GTF2E2, FOS, POLR2A,</p> <p>Protein Size: 291</p>
Molecular Weight:	33 kDa
Gene ID:	2961
NCBI Accession:	NM_002095 , NP_002086
UniProt:	P29084

Application Details

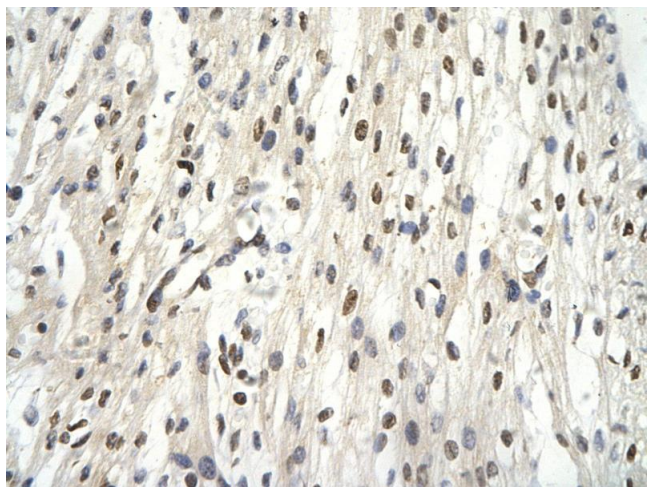
Application Notes:	Optimal working dilutions should be determined experimentally by the investigator.
Comment:	Antigen size: 291 AA
Restrictions:	For Research Use only

Handling

Format:	Liquid
Concentration:	Lot specific
Buffer:	Liquid. Purified antibody supplied in 1x PBS buffer with 0.09 % (w/v) sodium azide and 2 % sucrose.
Preservative:	Sodium azide
Precaution of Use:	This product contains Sodium azide: a POISONOUS AND HAZARDOUS SUBSTANCE which should be handled by trained staff only.
Handling Advice:	Avoid repeated freeze-thaw cycles.
Storage:	-20 °C
Storage Comment:	For short term use, store at 2-8°C up to 1 week. For long term storage, store at -20°C in small

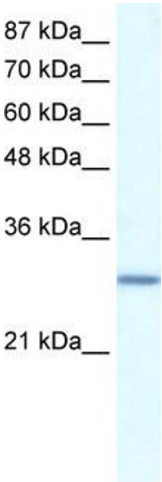
aliquots to prevent freeze-thaw cycles.

Images



Immunohistochemistry

Image 1. Rabbit Anti-GTF2E2 Antibody Paraffin Embedded
Tissue: Human cardiac cell Cellular Data: Epithelial cells of
renal tubule Antibody Concentration: 4.0-8.0 ug/ml
Magnification: 400X



Western Blotting

Image 2. WB Suggested Anti-GTF2E2 Antibody Titration:
0.2-1 ug/ml ELISA Titer: 1:312500 Positive Control: Daudi
cell lysate GTF2E2 is supported by BioGPS gene expression
data to be expressed in Daudi