

Datasheet for ABIN2777299  
**anti-GTF2H3 antibody (N-Term)**

## 3 Images

[Go to Product page](#)

## Overview

Quantity:	100 µL
Target:	GTF2H3
Binding Specificity:	N-Term
Reactivity:	Human, Rat, Mouse, Rabbit, Horse, Cow, Guinea Pig, Pig
Host:	Rabbit
Clonality:	Polyclonal
Conjugate:	This GTF2H3 antibody is un-conjugated
Application:	Western Blotting (WB), Immunohistochemistry (IHC)

## Product Details

Immunogen:	The immunogen is a synthetic peptide directed towards the N terminal region of human GTF2H3
Sequence:	VIASHIQESR FLYPGKNGRL GDFFGDPGNP PEFNPSGSKD GKYELLTSAN
Predicted Reactivity:	Cow: 92%, Guinea Pig: 92%, Horse: 100%, Human: 100%, Mouse: 100%, Pig: 100%, Rabbit: 100%, Rat: 100%
Characteristics:	This is a rabbit polyclonal antibody against GTranscription Factor Antibodies2H3. It was validated on Western Blot and immunohistochemistry.
Purification:	Affinity Purified

## Target Details

Target:	GTF2H3
---------	--------

## Target Details

Alternative Name:	GTF2H3 ( <a href="#">GTF2H3 Products</a> )
Background:	<p>GTranscription Factor Antibodies2H3 interacts with HIV-1 Tat as a component of the HIV-1 transcription pre-initiation complex, but is released from the elongation complex which includes P-TEFb. It synergizes with HIV-1 Tat to induce transcription elongation from the HIV-1 LTR promoter.</p> <p>Alias Symbols: BTF2, TFB4, TFIIH</p> <p>Protein Interaction Partner: GTF2H2C_2, UBC, RPA3, RPA2, RPA1, CDK7, HEATR5A, MNAT1, GTF2H4, GTF2H2, GTF2H1, ERCC3, XBP1P1, ERCC2, AR,</p> <p>Protein Size: 308</p>
Molecular Weight:	34 kDa
Gene ID:	2967
NCBI Accession:	<a href="#">NM_001516</a> , <a href="#">NP_001507</a>
UniProt:	<a href="#">Q13889</a>
Pathways:	<a href="#">DNA Damage Repair</a>

## Application Details

Application Notes:	Optimal working dilutions should be determined experimentally by the investigator.
Comment:	Antigen size: 308 AA
Restrictions:	For Research Use only

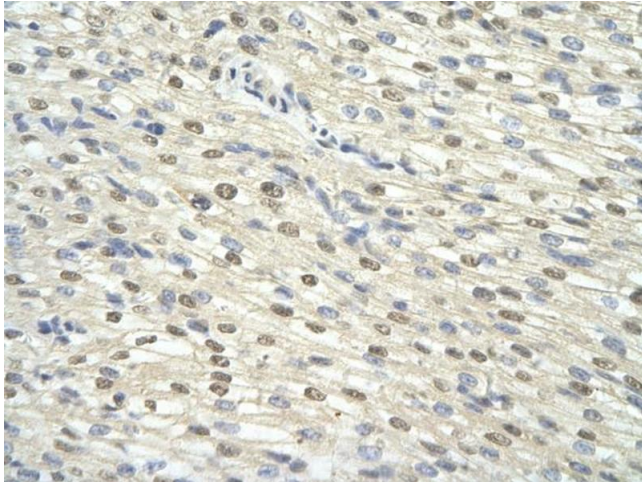
## Handling

Format:	Liquid
Concentration:	Lot specific
Buffer:	Liquid. Purified antibody supplied in 1x PBS buffer with 0.09 % (w/v) sodium azide and 2 % sucrose.
Preservative:	Sodium azide
Precaution of Use:	This product contains Sodium azide: a POISONOUS AND HAZARDOUS SUBSTANCE which should be handled by trained staff only.
Handling Advice:	Avoid repeated freeze-thaw cycles.
Storage:	-20 °C

## Handling

Storage Comment: For short term use, store at 2-8°C up to 1 week. For long term storage, store at -20°C in small aliquots to prevent freeze-thaw cycles.

## Validation report #102749 for Immunohistochemistry (IHC)



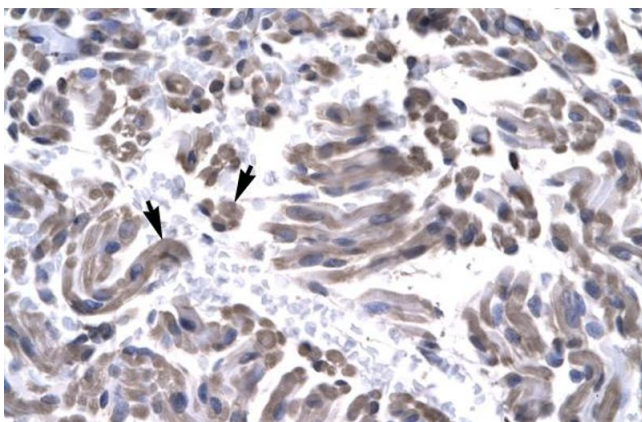
### Immunohistochemistry

**Image 1.** Rabbit Anti-GTF2H3 antibody Catalog Number: ARP31438 Paraffin Embedded Tissue: Human Heart cell Cellular Data: cardiac cell Antibody Concentration: 4.0-8.0 ug/ml Magnification: 400X



### Western Blotting

**Image 2.** WB Suggested Anti-GTF2H3 Antibody Titration: 0.2-1 ug/ml ELISA Titer: 1:2500 Positive Control: Jurkat cell lysate GTF2H3 is supported by BioGPS gene expression data to be expressed in Jurkat



### Immunohistochemistry

**Image 3.** Human Muscle