

Datasheet for ABIN2777302
anti-HHEX antibody (Middle Region)[Go to Product page](#)

7 Images

Overview

Quantity:	100 µL
Target:	HHEX
Binding Specificity:	Middle Region
Reactivity:	Human, Mouse, Rat, Dog, Guinea Pig, Cow, Horse
Host:	Rabbit
Clonality:	Polyclonal
Conjugate:	This HHEX antibody is un-conjugated
Application:	Western Blotting (WB), Immunohistochemistry (IHC)

Product Details

Immunogen:	The immunogen is a synthetic peptide directed towards the middle region of human HHEX
Sequence:	KQENPQSNKK EELES LDSSC DQRQDLPSEQ NKGASLDSSQ CSPSPASQED
Predicted Reactivity:	Cow: 93%, Dog: 100%, Guinea Pig: 93%, Horse: 100%, Human: 100%, Mouse: 79%, Rat: 100%
Characteristics:	This is a rabbit polyclonal antibody against HHEX. It was validated on Western Blot and immunohistochemistry.
Purification:	Affinity Purified

Target Details

Target:	HHEX
Alternative Name:	HHEX (HHEX Products)

Target Details

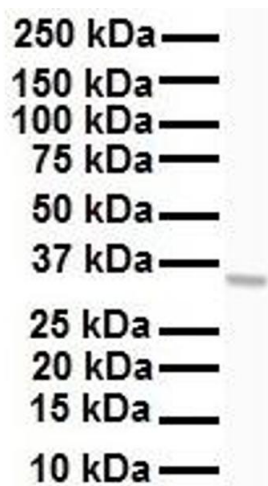
Background:	<p>HHEX encodes a member of the homeobox family of transcription factors, many of which are involved in developmental processes. Expression in specific hematopoietic lineages suggests that this protein may play a role in hematopoietic differentiation.</p> <p>Alias Symbols: HEX, PRH, HMPH, PRHX, HOX11L-PEN</p> <p>Protein Interaction Partner: KRTAP10-3, KRTAP10-8, KRTAP10-5, KRTAP10-7, TRMT6, TLE1, PSMA3, UBC, SOX8, KRTAP4-12, GATA6, EFEMP2, SOX10, JUN, GATA2, PML,</p> <p>Protein Size: 270</p>
Molecular Weight:	30 kDa
Gene ID:	3087
NCBI Accession:	NM_002729 , NP_002720
UniProt:	Q03014

Application Details

Application Notes:	Optimal working dilutions should be determined experimentally by the investigator.
Comment:	Antigen size: 270 AA
Restrictions:	For Research Use only

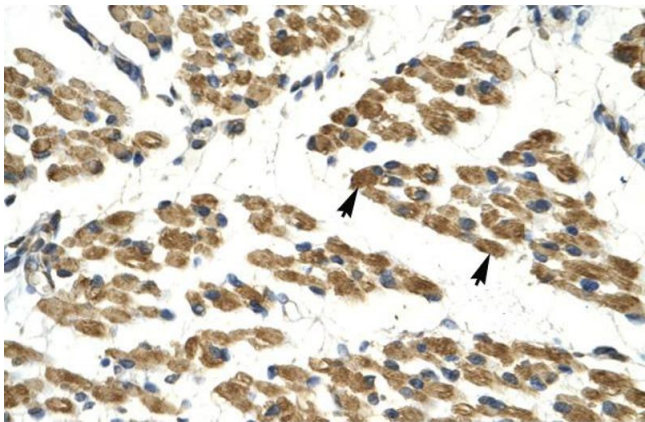
Handling

Format:	Liquid
Concentration:	Lot specific
Buffer:	Liquid. Purified antibody supplied in 1x PBS buffer with 0.09 % (w/v) sodium azide and 2 % sucrose.
Preservative:	Sodium azide
Precaution of Use:	This product contains Sodium azide: a POISONOUS AND HAZARDOUS SUBSTANCE which should be handled by trained staff only.
Handling Advice:	Avoid repeated freeze-thaw cycles.
Storage:	-20 °C
Storage Comment:	For short term use, store at 2-8°C up to 1 week. For long term storage, store at -20°C in small aliquots to prevent freeze-thaw cycles.



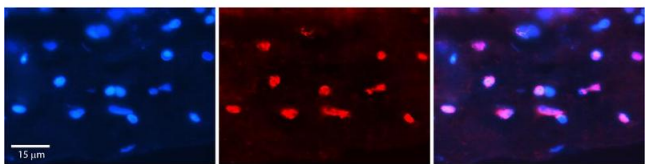
Western Blotting

Image 1. WB Suggested Anti-HHEX antibody Titration: 1 ug/mL Sample Type: Human HepG2



Immunohistochemistry

Image 2. Human Muscle



Immunohistochemistry

Image 3. Rabbit Anti-HHEX Antibody Catalog Number: ARP31443_P050 Formalin Fixed Paraffin Embedded Tissue: Human Adult heart Observed Staining: Nuclei in adipocytes but not in cardiomyocytes Primary Antibody Concentration: 1:100 Secondary Antibody: Donkey anti-Rabbit-Cy2/3 Secondary Antibody Concentration: 1:200 Magnification: 20X Exposure Time: 0.5 – 2.0 sec Protocol located in Reviews and Data.

Please check the [product details page](#) for more images. Overall 7 images are available for ABIN2777302.