

Datasheet for ABIN2777308
anti-PQBP1 antibody (Middle Region)

2 Images

[Go to Product page](#)

Overview

Quantity:	100 µL
Target:	PQBP1
Binding Specificity:	Middle Region
Reactivity:	Human, Mouse, Rat, Cow, Dog, Horse, Pig, Rabbit, Guinea Pig
Host:	Rabbit
Clonality:	Polyclonal
Conjugate:	This PQBP1 antibody is un-conjugated
Application:	Western Blotting (WB), Immunohistochemistry (IHC)

Product Details

Immunogen:	The immunogen is a synthetic peptide directed towards the middle region of human PQBP1
Sequence:	PSCGLPYYWN ADREEGKERR HHRREELAPY PKSKKAVSRK DEELDPM DPS
Predicted Reactivity:	Cow: 93%, Dog: 93%, Guinea Pig: 86%, Horse: 93%, Human: 100%, Mouse: 86%, Pig: 93%, Rabbit: 86%, Rat: 93%
Characteristics:	This is a rabbit polyclonal antibody against PQBP1. It was validated on Western Blot and immunohistochemistry.
Purification:	Protein A purified

Target Details

Target:	PQBP1
---------	-------

Target Details

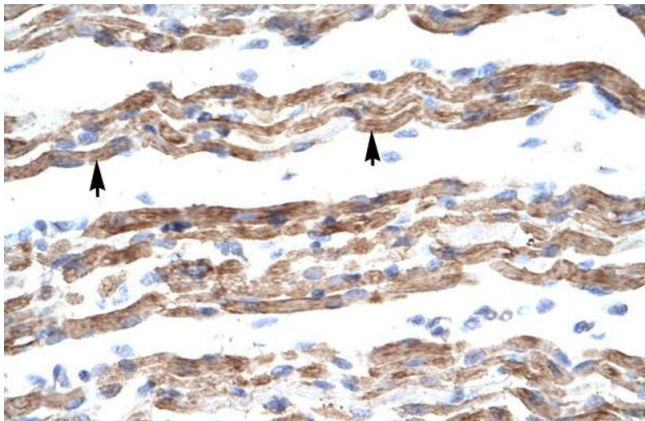
Alternative Name:	PQBP1 (PQBP1 Products)
Background:	<p>PQBP1 is a nuclear polyglutamine-binding protein that contains a WW domain. Mutations in this gene are associated with X-linked mental retardation.</p> <p>Protein Interaction Partner: MAPRE1, GOLGA2, LZTS2, UBC, APBB1, WDR77, AQR, HNRNPH2, MRPL53, SLIRP, SRPRB, SUGP1, MRPS28, RPS6KA6, HRSP12, SC02, ZC3H11A, UBL4A, VDAC3, RRBP1, RPS28, RBMS1, NDUFA7, IDH3G, APP, WBP11, RCVRN, LNX1, SF3A2, SFTPC, TXNL4A, TLX3, LRIF1, MED31, POLR2A, C14orf</p> <p>Protein Size: 265</p>
Molecular Weight:	30 kDa
Gene ID:	10084
Pathways:	Ribonucleoprotein Complex Subunit Organization

Application Details

Application Notes:	Optimal working dilutions should be determined experimentally by the investigator.
Comment:	Antigen size: 265 AA
Restrictions:	For Research Use only

Handling

Format:	Liquid
Concentration:	Lot specific
Buffer:	Liquid. Purified antibody supplied in 1x PBS buffer with 0.09 % (w/v) sodium azide and 2 % sucrose.
Preservative:	Sodium azide
Precaution of Use:	This product contains Sodium azide: a POISONOUS AND HAZARDOUS SUBSTANCE which should be handled by trained staff only.
Handling Advice:	Avoid repeated freeze-thaw cycles.
Storage:	-20 °C
Storage Comment:	For short term use, store at 2-8°C up to 1 week. For long term storage, store at -20°C in small aliquots to prevent freeze-thaw cycles.



Immunohistochemistry

Image 1. Human Muscle



Western Blotting

Image 2. WB Suggested Anti-PQBP1 Antibody Titration: 2.5ug/ml ELISA Titer: 1:312500 Positive Control: Human Lung