

Datasheet for ABIN2777313
anti-RBM6 antibody (N-Term)



[Go to Product page](#)

1 Image

Overview

Quantity:	100 µL
Target:	RBM6
Binding Specificity:	N-Term
Reactivity:	Human, Mouse, Rat, Cow, Dog, Rabbit, Guinea Pig, Horse, Pig
Host:	Rabbit
Clonality:	Polyclonal
Conjugate:	This RBM6 antibody is un-conjugated
Application:	Western Blotting (WB)

Product Details

Immunogen:	The immunogen is a synthetic peptide directed towards the N terminal region of human RBM6
Sequence:	RNRDVSDLDF RDKDGTQVDF RGRGSGTTDL DFRDRDTPHS DFRGRHRSRT
Predicted Reactivity:	Cow: 100%, Dog: 100%, Guinea Pig: 93%, Horse: 100%, Human: 100%, Mouse: 100%, Pig: 100%, Rabbit: 86%, Rat: 93%
Characteristics:	This is a rabbit polyclonal antibody against RBM6. It was validated on Western Blot using a cell lysate as a positive control.
Purification:	Affinity Purified

Target Details

Target:	RBM6
---------	------

Target Details

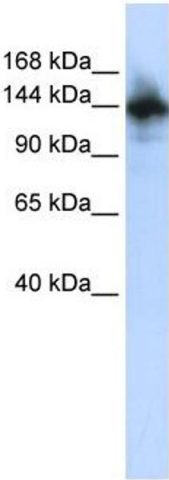
Alternative Name:	RBM6 (RBM6 Products)
Background:	<p>RBM6 contains 1 G-patch domain and 1 RRM (RNA recognition motif) domain. It specifically binds poly(G) RNA homopolymers in vitro.</p> <p>Alias Symbols: 3G2, DEF-3, DEF3, DKFZp686B0877, FLJ36517, HLC-11, NY-LU-12, g16</p> <p>Protein Interaction Partner: EEF1G, UBC, ASB18, ASB12, SF3B3, TAF7, SIRT7, SUMO2,</p> <p>Protein Size: 1123</p>
Molecular Weight:	129 kDa
Gene ID:	10180
NCBI Accession:	NM_005777 , NP_005768
UniProt:	P78332

Application Details

Application Notes:	Optimal working dilutions should be determined experimentally by the investigator.
Comment:	Antigen size: 1123 AA
Restrictions:	For Research Use only

Handling

Format:	Liquid
Concentration:	Lot specific
Buffer:	Liquid. Purified antibody supplied in 1x PBS buffer with 0.09 % (w/v) sodium azide and 2 % sucrose.
Preservative:	Sodium azide
Precaution of Use:	This product contains Sodium azide: a POISONOUS AND HAZARDOUS SUBSTANCE which should be handled by trained staff only.
Handling Advice:	Avoid repeated freeze-thaw cycles.
Storage:	-20 °C
Storage Comment:	For short term use, store at 2-8°C up to 1 week. For long term storage, store at -20°C in small aliquots to prevent freeze-thaw cycles.



Western Blotting

Image 1. WB Suggested Anti-RBM6 Antibody Titration: 0.2-1 ug/ml ELISA Titer: 1:312500 Positive Control: HepG2 cell lysate RBM6 is supported by BioGPS gene expression data to be expressed in HepG2