

Datasheet for ABIN2777317
anti-IKZF1 antibody (Middle Region)[Go to Product page](#)

4 Images

Overview

Quantity:	100 µL
Target:	IKZF1
Binding Specificity:	Middle Region
Reactivity:	Human, Mouse, Rat, Dog, Cow, Horse, Guinea Pig, Rabbit
Host:	Rabbit
Clonality:	Polyclonal
Conjugate:	This IKZF1 antibody is un-conjugated
Application:	Western Blotting (WB)

Product Details

Immunogen:	The immunogen is a synthetic peptide directed towards the middle region of human IKZF1
Sequence:	DLCKIGSERS LVLDRLASNV AKRKSSMPQK FLGDKGLSDT PYDSSASYEK
Predicted Reactivity:	Cow: 92%, Dog: 93%, Guinea Pig: 93%, Horse: 100%, Human: 100%, Mouse: 93%, Rabbit: 92%, Rat: 93%
Characteristics:	This is a rabbit polyclonal antibody against IKZF1. It was validated on Western Blot using a cell lysate as a positive control.
Purification:	Affinity Purified

Target Details

Target:	IKZF1
---------	-------

Target Details

Alternative Name:	IKZF1 (IKZF1 Products)
Background:	<p>IKZF1 binds and activates the enhancer (delta-A element) of the CD3-delta gene. It functions in the specification and the maturation of the T-lymphocyte. It also interacts with a critical control element in the TDT (terminal deoxynucleotidyltransferase) promoter as well as with the promoters for other genes expressed during early stages of B- and T-cell development.</p> <p>Alias Symbols: Hs.54452, IK1, IKAROS, LYF1, PR00758, ZNFN1A1, hIk-1</p> <p>Protein Interaction Partner: PRKAB2, PIN1, FGF12, DDX6, DCX, CTBP2, CTBP1, CKS1B, BYSL, FAM74A4, C1orf174, CEP57L1, ALKBH3, ZMAT2, ZNF417, FRMD6, SPATC1L, FAM161A, FAM214B, ARMC7, NOC4L, SCNM1, C8orf33, AEN, GMCL1P1, KIF9, SH2D4A, CBX8, LMO3, C19orf66, C1orf109, SYT17, ZNF581, FAM50B</p> <p>Protein Size: 519</p>
Molecular Weight:	57 kDa
Gene ID:	10320
NCBI Accession:	NM_006060 , NP_006051
UniProt:	Q13422
Pathways:	Production of Molecular Mediator of Immune Response

Application Details

Application Notes:	Optimal working dilutions should be determined experimentally by the investigator.
Comment:	Antigen size: 519 AA
Restrictions:	For Research Use only

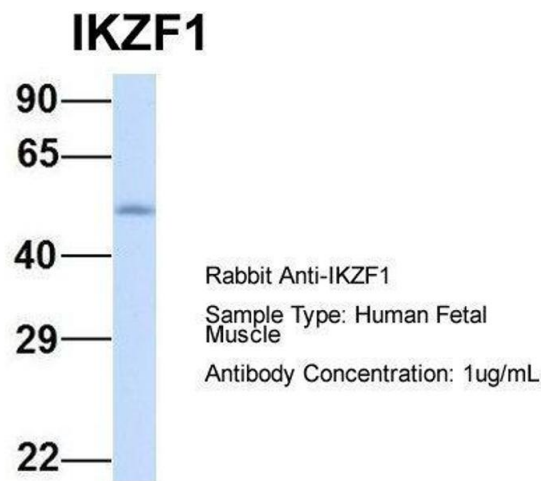
Handling

Format:	Liquid
Concentration:	Lot specific
Buffer:	Liquid. Purified antibody supplied in 1x PBS buffer with 0.09 % (w/v) sodium azide and 2 % sucrose.
Preservative:	Sodium azide
Precaution of Use:	This product contains Sodium azide: a POISONOUS AND HAZARDOUS SUBSTANCE which should be handled by trained staff only.

Handling

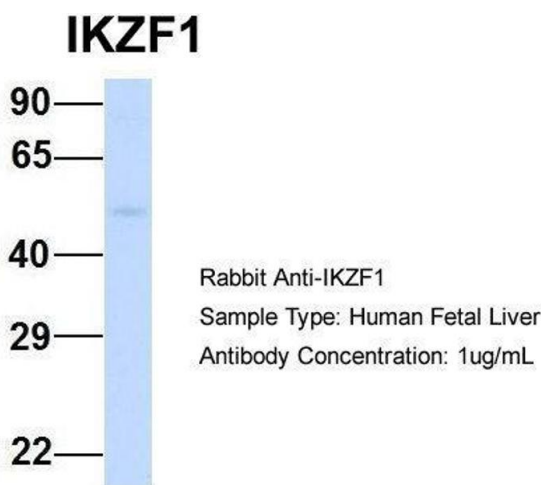
Handling Advice:	Avoid repeated freeze-thaw cycles.
Storage:	-20 °C
Storage Comment:	For short term use, store at 2-8°C up to 1 week. For long term storage, store at -20°C in small aliquots to prevent freeze-thaw cycles.

Images



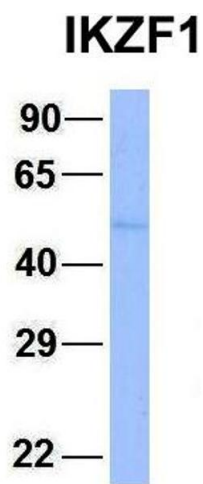
Western Blotting

Image 1. Host: Rabbit Target Name: IKZF1 Sample Type: Human Fetal Muscle Antibody Dilution: 1.0ug/ml



Western Blotting

Image 2. Host: Rabbit Target Name: IKZF1 Sample Type: Human Fetal Liver Antibody Dilution: 1.0ug/ml



Western Blotting

Image 3. Host: Rabbit Target Name: CHAD Sample Type:
Human Adult Placenta Antibody Dilution: 1.0ug/ml

Please check the [product details page](#) for more images. Overall 4 images are available for ABIN2777317.