

Datasheet for ABIN2777318
anti-HMG20A antibody (N-Term)



[Go to Product page](#)

1 Image

Overview

Quantity:	100 µL
Target:	HMG20A
Binding Specificity:	N-Term
Reactivity:	Human, Mouse, Rat, Dog, Rabbit, Cow, Horse, Guinea Pig
Host:	Rabbit
Clonality:	Polyclonal
Conjugate:	This HMG20A antibody is un-conjugated
Application:	Western Blotting (WB)

Product Details

Immunogen:	The immunogen is a synthetic peptide directed towards the N terminal region of human HMG20A
Sequence:	MENLMTSSTL PPLFADEDGS KESNDLATTG LNHPEVPYSS GATSSTNNPE
Predicted Reactivity:	Cow: 93%, Dog: 93%, Guinea Pig: 100%, Horse: 100%, Human: 100%, Mouse: 100%, Rabbit: 82%, Rat: 93%
Characteristics:	This is a rabbit polyclonal antibody against HMG20A. It was validated on Western Blot using a cell lysate as a positive control.
Purification:	Affinity Purified

Target Details

Target:	HMG20A
---------	--------

Target Details

Alternative Name:	HMG20A (HMG20A Products)
Background:	<p>HMG20A plays a role in neuronal differentiation as chromatin-associated protein. It overcomes the repressive effects of the neuronal silencer REST and induces the activation of neuronal-specific genes. The protein also act as inhibitor of HMG20B. It involved in the recruitment of the histone methyltransferase MLL and consequent increased methylation of histone H3 lysine 4.</p> <p>Alias Symbols: FLJ10739, HMGX1, HMGXB1</p> <p>Protein Interaction Partner: RSPH9, CFAP53, SYTL4, SCN1, CCDC136, RPP30, HMG20A, PTH2R, KPNA2, HPCAL1, DTNB, FMNL1, ADD1, BRAP, UBC, HECW2, HTT, HDAC2, HDAC1, MTA3, KDM1A, SMAD4, ELAVL1, GTF2A1L, TESC, RBM7, CCNK, MAGOHB,</p> <p>Protein Size: 347</p>
Molecular Weight:	40 kDa
Gene ID:	10363
NCBI Accession:	NM_018200 , NP_060670
UniProt:	Q9NP66

Application Details

Application Notes:	Optimal working dilutions should be determined experimentally by the investigator.
Comment:	Antigen size: 347 AA
Restrictions:	For Research Use only

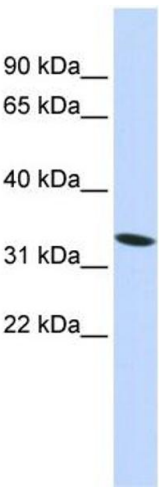
Handling

Format:	Liquid
Concentration:	Lot specific
Buffer:	Liquid. Purified antibody supplied in 1x PBS buffer with 0.09 % (w/v) sodium azide and 2 % sucrose.
Preservative:	Sodium azide
Precaution of Use:	This product contains Sodium azide: a POISONOUS AND HAZARDOUS SUBSTANCE which should be handled by trained staff only.
Handling Advice:	Avoid repeated freeze-thaw cycles.
Storage:	-20 °C

Handling

Storage Comment: For short term use, store at 2-8°C up to 1 week. For long term storage, store at -20°C in small aliquots to prevent freeze-thaw cycles.

Images



Western Blotting

Image 1. WB Suggested Anti-HMG20A Antibody Titration: 0.2-1 ug/ml ELISA Titer: 1:62500 Positive Control: 293T cell lysate HMG20A is supported by BioGPS gene expression data to be expressed in HEK293T