

Datasheet for ABIN2777320  
**anti-SLC30A9 antibody (N-Term)**[Go to Product page](#)

## 2 Images

## Overview

Quantity:	100 µL
Target:	SLC30A9
Binding Specificity:	N-Term
Reactivity:	Human, Rat, Mouse, Dog, Rabbit, Guinea Pig, Horse, Cow, Zebrafish (Danio rerio)
Host:	Rabbit
Clonality:	Polyclonal
Conjugate:	This SLC30A9 antibody is un-conjugated
Application:	Western Blotting (WB), Immunohistochemistry (IHC)

## Product Details

Immunogen:	The immunogen is a synthetic peptide directed towards the N terminal region of human SLC30A9
Sequence:	LKQEPLQVRV KAVLKKREYG SKYTQNNFIT GVRINEFCL KSSDLEQLR
Predicted Reactivity:	Cow: 100%, Dog: 100%, Guinea Pig: 100%, Horse: 100%, Human: 100%, Mouse: 93%, Rabbit: 100%, Rat: 100%, Zebrafish: 85%
Characteristics:	This is a rabbit polyclonal antibody against SLC30A9. It was validated on Western Blot and immunohistochemistry.
Purification:	Affinity Purified

## Target Details

Target:	SLC30A9
---------	---------

## Target Details

Alternative Name:	SLC30A9 ( <a href="#">SLC30A9 Products</a> )
Background:	<p>The gene corresponding to embryonic lung protein [also known as Solute carrier family 30 (Zinc transporter), member 9, SLC30A9], is likely to be an evolutionarily conserved, housekeeping gene that plays a role intimately linked with cellular replication, DNA synthesis and/or transcriptional regulation.</p> <p>Alias Symbols: HUEL, ZNT9, GAC63, C4orf1</p> <p>Protein Interaction Partner: DHX15, ELAVL1, UBC, NCOA2, ESR1,</p> <p>Protein Size: 568</p>
Molecular Weight:	63 kDa
Gene ID:	10463
NCBI Accession:	<a href="#">NM_006345</a> , <a href="#">NP_006336</a>
UniProt:	<a href="#">Q9Y6R2</a>
Pathways:	<a href="#">SARS-CoV-2 Protein Interactome</a>

## Application Details

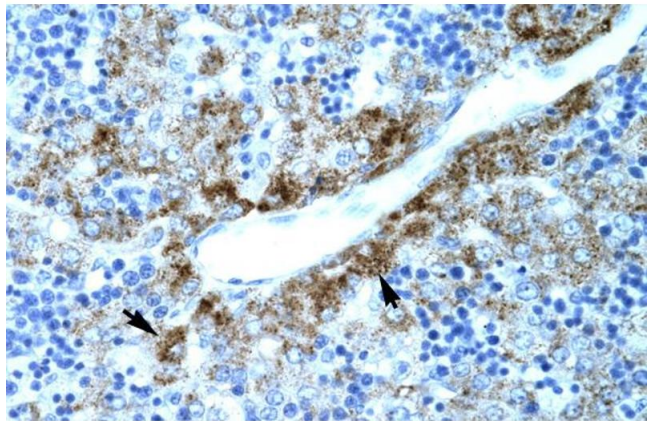
Application Notes:	Optimal working dilutions should be determined experimentally by the investigator.
Comment:	Antigen size: 568 AA
Restrictions:	For Research Use only

## Handling

Format:	Liquid
Concentration:	Lot specific
Buffer:	Liquid. Purified antibody supplied in 1x PBS buffer with 0.09 % (w/v) sodium azide and 2 % sucrose.
Preservative:	Sodium azide
Precaution of Use:	This product contains Sodium azide: a POISONOUS AND HAZARDOUS SUBSTANCE which should be handled by trained staff only.
Handling Advice:	Avoid repeated freeze-thaw cycles.
Storage:	-20 °C
Storage Comment:	For short term use, store at 2-8°C up to 1 week. For long term storage, store at -20°C in small

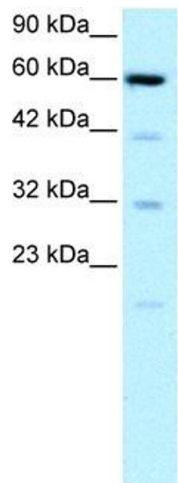
aliquots to prevent freeze-thaw cycles.

Images



Immunohistochemistry

**Image 1.** Human Liver



Western Blotting

**Image 2.** WB Suggested Anti-SLC30A9 Antibody Titration:  
0.2-1 ug/ml ELISA Titer: 1:62500 Positive Control: HepG2  
cell lysate