

Datasheet for ABIN2777328
anti-TCFL5 antibody (Middle Region)[Go to Product page](#)

2 Images

Overview

Quantity:	100 µL
Target:	TCFL5
Binding Specificity:	Middle Region
Reactivity:	Human, Mouse, Rat, Dog, Cow, Guinea Pig, Horse
Host:	Rabbit
Clonality:	Polyclonal
Conjugate:	This TCFL5 antibody is un-conjugated
Application:	Western Blotting (WB), Immunohistochemistry (IHC)

Product Details

Immunogen:	The immunogen is a synthetic peptide directed towards the middle region of human TCFL5
Sequence:	TLIRHPSELM NVPLQQQNK TALVKNKTA TTTALQFTYP LFTTNACSTS
Predicted Reactivity:	Cow: 86%, Dog: 86%, Guinea Pig: 86%, Horse: 86%, Human: 100%, Mouse: 93%, Rat: 93%
Characteristics:	This is a rabbit polyclonal antibody against TCFL5. It was validated on Western Blot and immunohistochemistry.
Purification:	Affinity Purified

Target Details

Target:	TCFL5
Alternative Name:	TCFL5 (TCFL5 Products)

Target Details

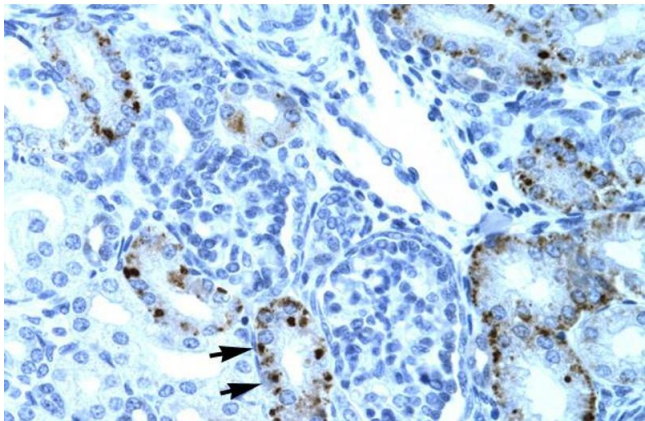
Background:	TCFL5 is a new bHLH transcription factor that negatively regulates upstream transcription factor-dependent transcription. Alias Symbols: CHA, Figlb, E2BP-1, bHLHe82 Protein Interaction Partner: USF1, TOPBP1, Protein Size: 500
Molecular Weight:	53 kDa
Gene ID:	10732
NCBI Accession:	NM_006602 , NP_006593
UniProt:	Q9UL49

Application Details

Application Notes:	Optimal working dilutions should be determined experimentally by the investigator.
Comment:	Antigen size: 500 AA
Restrictions:	For Research Use only

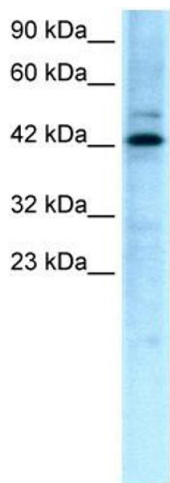
Handling

Format:	Liquid
Concentration:	Lot specific
Buffer:	Liquid. Purified antibody supplied in 1x PBS buffer with 0.09 % (w/v) sodium azide and 2 % sucrose.
Preservative:	Sodium azide
Precaution of Use:	This product contains Sodium azide: a POISONOUS AND HAZARDOUS SUBSTANCE which should be handled by trained staff only.
Handling Advice:	Avoid repeated freeze-thaw cycles.
Storage:	-20 °C
Storage Comment:	For short term use, store at 2-8°C up to 1 week. For long term storage, store at -20°C in small aliquots to prevent freeze-thaw cycles.



Immunohistochemistry

Image 1. Human kidney



Western Blotting

Image 2. WB Suggested Anti-TCFL5 Antibody Titration: 0.2-1 ug/ml ELISA Titer: 1:312500 Positive Control: HepG2 cell lysate TCFL5 is supported by BioGPS gene expression data to be expressed in HepG2