

Datasheet for ABIN2777333  
**anti-RIPK3 antibody (N-Term)**[Go to Product page](#)

7 Images

1 Publication

## Overview

Quantity:	100 µL
Target:	RIPK3
Binding Specificity:	N-Term
Reactivity:	Human, Mouse, Rat, Cow, Pig, Horse, Dog
Host:	Rabbit
Clonality:	Polyclonal
Conjugate:	This RIPK3 antibody is un-conjugated
Application:	Western Blotting (WB), Immunohistochemistry (IHC)

## Product Details

Immunogen:	The immunogen is a synthetic peptide directed towards the N terminal region of human RIPK3
Sequence:	GGSQSGTGSG EPGGTLGYLA PELFVNVNRK ASTASDVYSF GILMWAVLAG
Predicted Reactivity:	Cow: 79%, Dog: 93%, Horse: 86%, Human: 100%, Mouse: 86%, Pig: 86%, Rat: 91%
Characteristics:	This is a rabbit polyclonal antibody against RIPK3. It was validated on Western Blot and immunohistochemistry.
Purification:	Protein A purified

## Target Details

Target:	RIPK3
Alternative Name:	RIPK3 ( <a href="#">RIPK3 Products</a> )

## Target Details

Background:	<p>RIPK3 is a member of the receptor-interacting protein (RIP) family of serine/threonine protein kinases, and contains a C-terminal domain unique from other RIP family members. The protein is predominantly localized to the cytoplasm, and can undergo nucleocytoplasmic shuttling dependent on novel nuclear localization and export signals. It is a component of the tumor necrosis factor (TNF) receptor-I signaling complex, and can induce apoptosis and weakly activate the NF-kappaB transcription factor. The product of this gene is a member of the receptor-interacting protein (RIP) family of serine/threonine protein kinases, and contains a C-terminal domain unique from other RIP family members. The encoded protein is predominantly localized to the cytoplasm, and can undergo nucleocytoplasmic shuttling dependent on novel nuclear localization and export signals. It is a component of the tumor necrosis factor (TNF) receptor-I signaling complex, and can induce apoptosis and weakly activate the NF-kappaB transcription factor.</p> <p>Alias Symbols: RIP3, RIP3 beta, RIP3 gamma</p> <p>Protein Interaction Partner: BMH1, RFX6, FADD, RIPK1, CASP8, INPP5K, CDC37, STIP1, PYGL, FKBP5, FKBP4, CTNND1, UBC, XIAP, BIRC3, BIRC2, TICAM1, TRAF2, TNFRSF1A,</p> <p>Protein Size: 518</p>
Molecular Weight:	57 kDa
Gene ID:	11035
NCBI Accession:	<a href="#">NM_006871</a> , <a href="#">NP_006862</a>
UniProt:	<a href="#">Q9Y572</a>
Pathways:	<a href="#">Activation of Innate immune Response</a> , <a href="#">Toll-Like Receptors Cascades</a>

## Application Details

Application Notes:	Optimal working dilutions should be determined experimentally by the investigator.
Comment:	Antigen size: 518 AA
Restrictions:	For Research Use only

## Handling

Format:	Liquid
Concentration:	Lot specific
Buffer:	Liquid. Purified antibody supplied in 1x PBS buffer with 0.09 % (w/v) sodium azide and 2 % sucrose.

## Handling

Preservative:	Sodium azide
Precaution of Use:	This product contains Sodium azide: a POISONOUS AND HAZARDOUS SUBSTANCE which should be handled by trained staff only.
Handling Advice:	Avoid repeated freeze-thaw cycles.
Storage:	-20 °C
Storage Comment:	For short term use, store at 2-8°C up to 1 week. For long term storage, store at -20°C in small aliquots to prevent freeze-thaw cycles.

## Publications

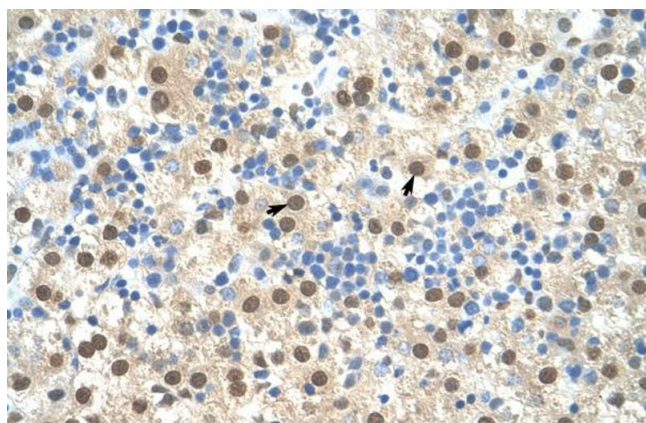
Product cited in:	Lazrek, Goffard, Schanen, Karquel, Bocket, Lion, Devaux, Hedouin, Gosset, Hober: "Detection of hepatitis C virus antibodies and RNA among medicolegal autopsy cases in Northern France." in: <b>Diagnostic microbiology and infectious disease</b> , Vol. 55, Issue 1, pp. 55-8, (2006) ( <a href="#">PubMed</a> ).
-------------------	---

## Images



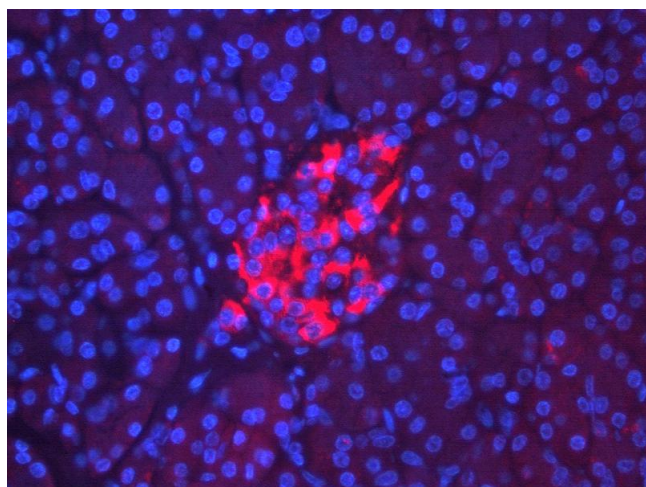
### Immunohistochemistry

**Image 1.** Human Heart



#### Immunohistochemistry

**Image 2.** Human Liver



#### Immunohistochemistry

**Image 3.** RIPK3 antibody - N-terminal region (ARP31513\_T100) Catalog Number: ARP31513\_T100  
Formalin Fixed Paraffin Embedded Tissue: Human Pancreas Tissue Observed Staining: Cytoplasmic in endocrine part (islets) of the pancreas. No staining observed in exocrine cells Primary Antibody Concentration: 3 -12 ug/ml Secondary Antibody: Donkey anti-Rabbit-Cy3 Secondary Antibody Concentration: 1:200 Magnification: 20X Exposure: 0.2 seconds

Please check the [product details page](#) for more images. Overall 7 images are available for ABIN2777333.