



Datasheet for ABIN2777341
anti-SNF8 antibody (N-Term)



[Go to Product page](#)

4 Images

Overview

Quantity:	100 µL
Target:	SNF8
Binding Specificity:	N-Term
Reactivity:	Human, Rat, Mouse, Cow, Dog, Rabbit, Guinea Pig, Horse, Zebrafish (Danio rerio)
Host:	Rabbit
Clonality:	Polyclonal
Conjugate:	This SNF8 antibody is un-conjugated
Application:	Western Blotting (WB), Immunohistochemistry (IHC)

Product Details

Immunogen:	The immunogen is a synthetic peptide directed towards the N terminal region of human EAP30
Sequence:	MHRRGVGAGA IAKKKLAEAK YKERGTVLAE DQLAQMSKQL DMFKTNLEEF
Predicted Reactivity:	Cow: 100%, Dog: 100%, Guinea Pig: 100%, Horse: 100%, Human: 100%, Mouse: 100%, Rabbit: 100%, Rat: 100%, Zebrafish: 93%
Characteristics:	This is a rabbit polyclonal antibody against SNF8. It was validated on Western Blot and immunohistochemistry.
Purification:	Affinity Purified

Target Details

Target:	SNF8
---------	------

Target Details

Alternative Name: EAP30 ([SNF8 Products](#))

Background: ELL encodes an RNA polymerase II transcription factor that undergoes frequent translocation in acute myeloid leukemia (AML). In addition to its elongation activity, ELL contains a novel type of RNA polymerase II interaction domain that is capable of repressing polymerase activity in promoter-specific transcription. EAP30 is a subunit of the ELL complex. EAP30 can interact with ELL and derepress ELL's inhibitory activity in vitro. SNF8, VPS25 (MIM 610907), and VPS36 (MIM 610903) form ESCRT-II (endosomal sorting complex required for transport II), a complex involved in endocytosis of ubiquitinated membrane proteins. SNF8, VPS25, and VPS36 are also associated in a multiprotein complex with RNA polymerase II elongation factor (ELL, MIM 600284) (Slagsvold et al., 2005 [PubMed 15755741], Kamura et al., 2001 [PubMed 11278625]). [supplied by OMIM].

Alias Symbols: Dot3, EAP30, VPS22

Protein Interaction Partner: GOLGA2, VPS25, TRIM54, VAC14, UBC, BCAT1, SUV39H2, ACBD3, DUS3L, WDR12, PRMT6, RPU5D2, KDM1A, EFTUD2, TTC1, HARS, GTF2F1, GTF2E1, ELL, RBP1, MCM2, ADORA1, METTL14, NUDCD3, RILP, VPS36, CHMP6, VPS28, SNF8, TSG101, VPS20, NIF3L1, DVL2,

Protein Size: 258

Molecular Weight: 29 kDa

Gene ID: 11267

NCBI Accession: [NM_007241](#), [NP_009172](#)

UniProt: [Q96H20](#)

Application Details

Application Notes: Optimal working dilutions should be determined experimentally by the investigator.

Comment: Antigen size: 258 AA

Restrictions: For Research Use only

Handling

Format: Liquid

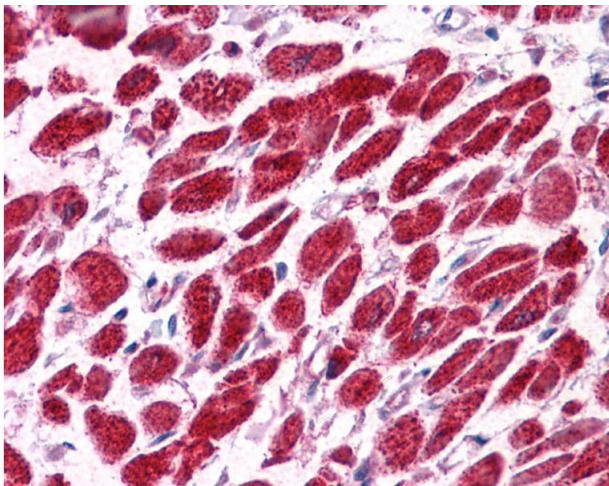
Concentration: Lot specific

Buffer: Liquid. Purified antibody supplied in 1x PBS buffer with 0.09 % (w/v) sodium azide and 2 % sucrose.

Handling

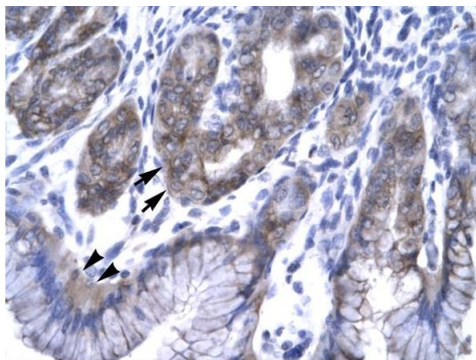
Preservative:	Sodium azide
Precaution of Use:	This product contains Sodium azide: a POISONOUS AND HAZARDOUS SUBSTANCE which should be handled by trained staff only.
Handling Advice:	Avoid repeated freeze-thaw cycles.
Storage:	-20 °C
Storage Comment:	For short term use, store at 2-8°C up to 1 week. For long term storage, store at -20°C in small aliquots to prevent freeze-thaw cycles.

Images



Immunohistochemistry

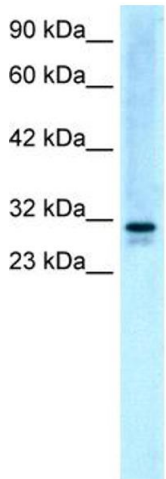
Image 1.



Rabbit Anti-EAP30 Antibody
Catalog Number: ARP31531
Lot Number: QC1119
Paraffin Embedded Tissue: Human Stomach
Cells with Positive label: Epithelial Cells of Fundic Gland (Indicated with Arrows)
and Surface Mucous Cells (Indicated with Arrow Heads)
Antibody Concentration: 4.0-8.0 µg/ml
Magnification: 400X

Immunohistochemistry

Image 2. Rabbit Anti-EAP30 Antibody Paraffin Embedded Tissue: Human Stomach Cellular Data: Epithelial cells of Fundic Gland and Surface Mucous Cells Antibody Concentration: 4.0-8.0 ug/ml Magnification: 400X



Rabbit Anti- EAP30 Antibody
Catalog Number: ARP31531
Lot Number: QC1119
Lane: HepG2 Cell Lysate

Antibody Titration: 5.0ug/ml
Gel Concentration: 12%

Western Blotting

Image 3. WB Suggested Anti-EAP30 Antibody Titration: 5.0ug/ml Positive Control: HepG2 cell lysate SNF8 is supported by BioGPS gene expression data to be expressed in HepG2

Please check the [product details page](#) for more images. Overall 4 images are available for ABIN2777341.