

Datasheet for ABIN2777342
anti-KLF8 antibody (N-Term)[Go to Product page](#)

2 Images

4 Publications

Overview

Quantity:	100 µL
Target:	KLF8
Binding Specificity:	N-Term
Reactivity:	Human, Rabbit, Dog, Horse, Cow
Host:	Rabbit
Clonality:	Polyclonal
Conjugate:	This KLF8 antibody is un-conjugated
Application:	Western Blotting (WB), Immunohistochemistry (IHC)

Product Details

Immunogen:	The immunogen is a synthetic peptide directed towards the N terminal region of human KLF8
Sequence:	LSFHKPKAPL QPASMLQAPI RPPKPQSSPQ TLVVSTSTSD MTSANIPTV
Predicted Reactivity:	Cow: 79%, Dog: 79%, Horse: 77%, Human: 100%, Rabbit: 86%
Characteristics:	This is a rabbit polyclonal antibody against KLF8. It was validated on Western Blot and immunohistochemistry.
Purification:	Affinity Purified

Target Details

Target:	KLF8
Alternative Name:	KLF8 (KLF8 Products)

Target Details

Background: KLF8 is abnormally expressed in female patients with X autosome translocation t(X,21)(p11.2,q22.3) and non-syndromic mental retardation.

Alias Symbols: BKLF3, DKFZp686O08126, DXS741, MGC138314, ZNF741

Protein Interaction Partner: Dlg4, APP, UBC, XPO1, PARP1, KAT2B, EP300, CREBBP, FHL3, CTBP2,

Protein Size: 359

Molecular Weight: 39 kDa

Gene ID: 11279

NCBI Accession: [NM_007250](#), [NP_009181](#)

UniProt: [O95600](#)

Application Details

Application Notes: Optimal working dilutions should be determined experimentally by the investigator.

Comment: Antigen size: 359 AA

Restrictions: For Research Use only

Handling

Format: Liquid

Concentration: Lot specific

Buffer: Liquid. Purified antibody supplied in 1x PBS buffer with 0.09 % (w/v) sodium azide and 2 % sucrose.

Preservative: Sodium azide

Precaution of Use: This product contains Sodium azide: a POISONOUS AND HAZARDOUS SUBSTANCE which should be handled by trained staff only.

Handling Advice: Avoid repeated freeze-thaw cycles.

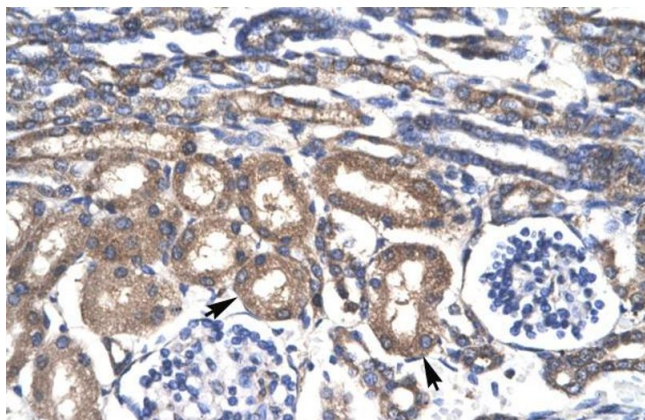
Storage: -20 °C

Storage Comment: For short term use, store at 2-8°C up to 1 week. For long term storage, store at -20°C in small aliquots to prevent freeze-thaw cycles.

Publications

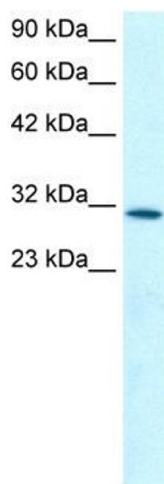
Product cited in: Sun, Zhou, Yin, Ding, Zhong: "Silencing of ZNF217 gene influences the biological behavior of a human ovarian cancer cell line." in: **International journal of oncology**, Vol. 32, Issue 5, pp. 1065-71, (2008) ([PubMed](#)).

Images



Immunohistochemistry

Image 1. Human kidney



Western Blotting

Image 2. WB Suggested Anti-KLF8 Antibody Titration: 0.2-1 ug/ml ELISA Titer: 1:2500 Positive Control: Human Kidney