

Datasheet for ABIN2777350  
**anti-ZNF805 antibody (Middle Region)**[Go to Product page](#)

## 1 Image

## Overview

Quantity:	100 µL
Target:	ZNF805
Binding Specificity:	Middle Region
Reactivity:	Human, Horse, Cow, Dog, Guinea Pig, Rabbit, Rat
Host:	Rabbit
Clonality:	Polyclonal
Conjugate:	This ZNF805 antibody is un-conjugated
Application:	Western Blotting (WB)

## Product Details

Immunogen:	The immunogen is a synthetic peptide directed towards the middle region of human ZNF264
Sequence:	GKAFSNRADL IRHFSIHTGE KPYECMECGK AFNRRSGLTR HQRHSGEKP
Predicted Reactivity:	Cow: 93%, Dog: 86%, Guinea Pig: 86%, Horse: 93%, Human: 100%, Rabbit: 93%, Rat: 100%
Characteristics:	This is a rabbit polyclonal antibody against ZNF805. It was validated on Western Blot.
Purification:	Affinity Purified

## Target Details

Target:	ZNF805
Alternative Name:	ZNF805 ( <a href="#">ZNF805 Products</a> )
Background:	This gene encodes a zinc finger protein and belongs to the krueppel C2H2-type zinc-finger

## Target Details

protein family. Zinc finger proteins are often localized in the nucleus, bind nucleic acids, and regulate transcription.

Protein Size: 377

Molecular Weight: 41 kDa

Gene ID: 9422

NCBI Accession: [NM\\_003417](#), [NP\\_003408](#)

UniProt: [O43296](#)

## Application Details

Application Notes: Optimal working dilution should be determined by the investigator.

Restrictions: For Research Use only

## Handling

Format: Liquid

Concentration: 1 mg/mL

Buffer: Liquid. Purified antibody supplied in 1x PBS buffer with 0.09 % (w/v) sodium azide and 2 % sucrose.

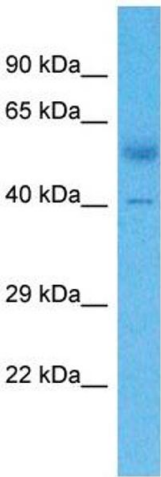
Preservative: Sodium azide

Precaution of Use: This product contains Sodium azide: a POISONOUS AND HAZARDOUS SUBSTANCE which should be handled by trained staff only.

Handling Advice: Avoid repeat freeze-thaw cycles.

Storage: -20 °C

Storage Comment: For short term use, store at 2-8°C up to 1 week. For long term storage, store at -20°C in small aliquots to prevent freeze-thaw cycles.



Western Blotting

**Image 1.** Host: Rabbit Target Name: ZNF805 Sample Type: Lung Tumor lysates Antibody Dilution: 1.0ug/ml