



Datasheet for ABIN2777365
anti-Zfp-1 antibody (N-Term)



[Go to Product page](#)

3 Images

Overview

Quantity:	100 µL
Target:	Zfp-1
Binding Specificity:	N-Term
Reactivity:	Human, Mouse, Dog, Cow, Rat
Host:	Rabbit
Clonality:	Polyclonal
Conjugate:	This Zfp-1 antibody is un-conjugated
Application:	Western Blotting (WB), Immunohistochemistry (IHC)

Product Details

Immunogen:	The immunogen is a synthetic peptide directed towards the N terminal region of human ZFP1
Sequence:	SNRSYAGKQT DECNEFGKAL LYLKQEKTHS GVEYSEYNKS GKALSHKAAI
Predicted Reactivity:	Cow: 92%, Dog: 86%, Human: 100%, Mouse: 79%, Rat: 86%
Characteristics:	This is a rabbit polyclonal antibody against ZFP1. It was validated on Western Blot and immunohistochemistry.
Purification:	Affinity Purified

Target Details

Target:	Zfp-1
Alternative Name:	ZFP1 (Zfp-1 Products)

Target Details

Background: Zinc finger proteins (Zfp) are encoded by a large family of genes present in many organisms including yeast and human. Some of them are transcriptional activators and bind specifically to DNA by zinc mediated folded structures commonly known as zinc fingers. The putative Zfp-1 (Zinc finger protein 1 homolog) protein contains in addition to 7 zinc fingers, two helix-turn-helix motifs.

Alias Symbols: ZNF475

Protein Interaction Partner: UBC, CBX5, HDAC2, Trim28,

Protein Size: 352

Molecular Weight: 41 kDa

Gene ID: 162239

NCBI Accession: [NM_153688](#), [NP_710155](#)

UniProt: [Q8N9F9](#)

Application Details

Application Notes: Optimal working dilutions should be determined experimentally by the investigator.

Comment: Antigen size: 352 AA

Restrictions: For Research Use only

Handling

Format: Liquid

Concentration: Lot specific

Buffer: Liquid. Purified antibody supplied in 1x PBS buffer with 0.09 % (w/v) sodium azide and 2 % sucrose.

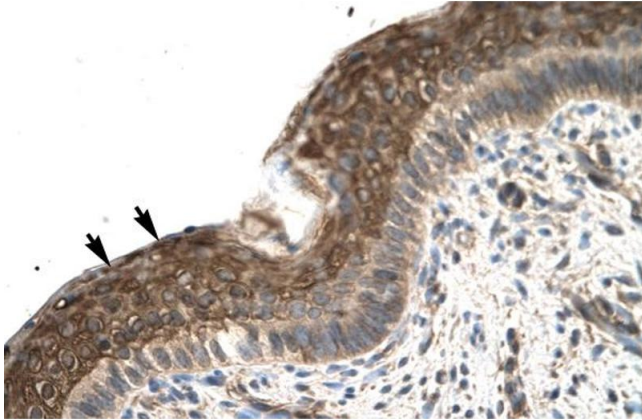
Preservative: Sodium azide

Precaution of Use: This product contains Sodium azide: a POISONOUS AND HAZARDOUS SUBSTANCE which should be handled by trained staff only.

Handling Advice: Avoid repeated freeze-thaw cycles.

Storage: -20 °C

Storage Comment: For short term use, store at 2-8°C up to 1 week. For long term storage, store at -20°C in small aliquots to prevent freeze-thaw cycles.



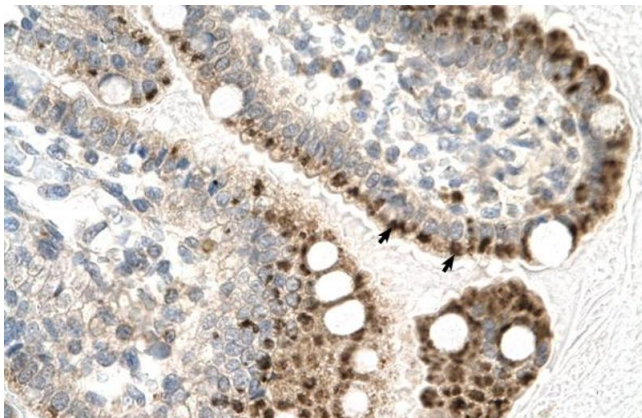
Immunohistochemistry

Image 1. Rabbit Anti-ZFP1 Antibody Catalog Number: ARP31586 Paraffin Embedded Tissue: Human Spermatozoa Cellular Data: Epithelial cells Antibody Concentration: 4.0-8.0 ug/ml Magnification: 400X



Western Blotting

Image 2. WB Suggested Anti-ZFP1 Antibody Titration: 0.2-1 ug/ml ELISA Titer: 1:312500 Positive Control: Jurkat cell lysate



Immunohistochemistry

Image 3. Rabbit Anti-ZFP1 Antibody Catalog Number: ARP31586 Paraffin Embedded Tissue: Human Intestine Cellular Data: Epithelial cells of intestinal villas Antibody Concentration: 4.0-8.0 ug/ml Magnification: 400X