



[Go to Product page](#)

Datasheet for ABIN2777373  
**anti-DLX2 antibody (N-Term)**

3 Images

Overview

Quantity:	100 µL
Target:	DLX2
Binding Specificity:	N-Term
Reactivity:	Human, Mouse, Cow, Dog, Guinea Pig, Horse
Host:	Rabbit
Clonality:	Polyclonal
Conjugate:	This DLX2 antibody is un-conjugated
Application:	Western Blotting (WB), Immunohistochemistry (IHC)

Product Details

Immunogen:	The immunogen is a synthetic peptide directed towards the N terminal region of human DLX2
Sequence:	MTGVFDSLVA DMHSTQIAAS STYHQHQPP SGGGAGPGGN SSSSSSLHKP
Predicted Reactivity:	Cow: 87%, Dog: 92%, Guinea Pig: 100%, Horse: 86%, Human: 100%, Mouse: 92%
Characteristics:	This is a rabbit polyclonal antibody against DLX2. It was validated on Western Blot and immunohistochemistry.
Purification:	Protein A purified

Target Details

Target:	DLX2
Alternative Name:	DLX2 ( <a href="#">DLX2 Products</a> )

## Target Details

---

**Background:** Many vertebrate homeo box-containing genes have been identified on the basis of their sequence similarity with Drosophila developmental genes. Members of the Dlx gene family contain a homeobox that is related to that of Distal-less (Dll), a gene expressed in the head and limbs of the developing fruit fly. The Distal-less (Dlx) family of genes comprises at least 6 different members, DLX1-DLX6. The DLX proteins are postulated to play a role in forebrain and craniofacial development.

Alias Symbols: TES1, TES-1

Protein Interaction Partner: GRN, PARK2, AVP, MVP, BZRAP1, DGCR6, PIK3R1, SUMO3, UBC, NCOA2, DIP2A, MSX2, MSX1, HOXC8, DLX5, DLX2, XRCC6,

Protein Size: 328

---

**Molecular Weight:** 34 kDa

---

**Gene ID:** 1746

---

**NCBI Accession:** [NM\\_004405](#), [NP\\_004396](#)

---

**UniProt:** [Q07687](#)

## Application Details

---

**Application Notes:** Optimal working dilutions should be determined experimentally by the investigator.

---

**Comment:** Antigen size: 328 AA

---

**Restrictions:** For Research Use only

## Handling

---

**Format:** Liquid

---

**Concentration:** Lot specific

---

**Buffer:** Liquid. Purified antibody supplied in 1x PBS buffer with 0.09 % (w/v) sodium azide and 2 % sucrose.

---

**Preservative:** Sodium azide

---

**Precaution of Use:** This product contains Sodium azide: a POISONOUS AND HAZARDOUS SUBSTANCE which should be handled by trained staff only.

---

**Handling Advice:** Avoid repeated freeze-thaw cycles.

---

**Storage:** -20 °C

---

## Handling

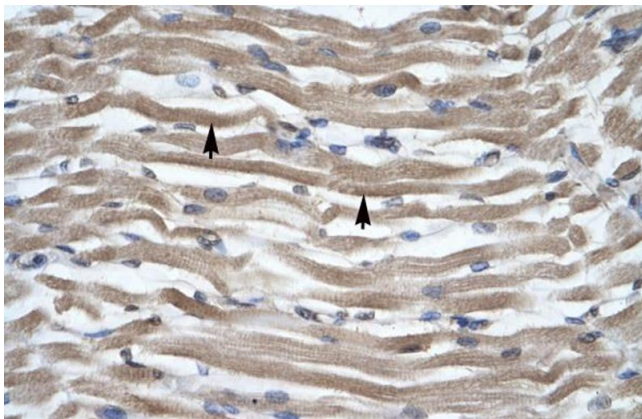
Storage Comment: For short term use, store at 2-8°C up to 1 week. For long term storage, store at -20°C in small aliquots to prevent freeze-thaw cycles.

## Images



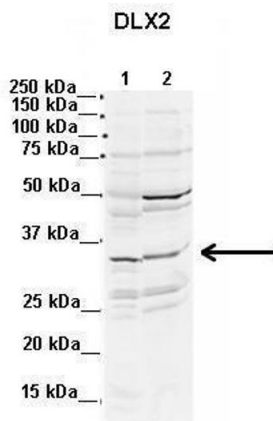
### Western Blotting

**Image 1.** WB Suggested Anti-DLX2 Antibody Titration: 1.25ug/ml ELISA Titer: 1:1562500 Positive Control: Jurkat cell lysate



### Immunohistochemistry

**Image 2.** Human Muscle



### Western Blotting

**Image 3.** Lanes: 1. Mouse WT brain extract (80ug) 2. Rat brain extract (80ug) Primary Antibody Dilution: 2ug/ml Secondary Antibody: IRDye 800CW goat anti-rabbit from LI-COR Bioscience Secondary Antibody Dilution: 1: 20,000 Gene Name: DLX2 Submitted by: Dr. Yuzhi Chen, University of Arkansas for Medical Science

See Immunoblot 2 Data and Customer Feedback for more information