



[Go to Product page](#)

Datasheet for ABIN2777376
anti-DLX5 antibody (N-Term)

3 Images

Overview

Quantity:	100 µL
Target:	DLX5
Binding Specificity:	N-Term
Reactivity:	Human, Mouse, Rat, Cow, Dog, Rabbit, Horse, Pig, Zebrafish (Danio rerio), Guinea Pig
Host:	Rabbit
Clonality:	Polyclonal
Conjugate:	This DLX5 antibody is un-conjugated
Application:	Western Blotting (WB), Immunohistochemistry (IHC)

Product Details

Immunogen:	The immunogen is a synthetic peptide directed towards the N terminal region of human DLX5
Sequence:	NPYQYQYHGV NGSAGSYPK AYADYSYASS YHQYGGAYNR VPSATNQPEK
Predicted Reactivity:	Cow: 100%, Dog: 100%, Guinea Pig: 93%, Horse: 100%, Human: 100%, Mouse: 100%, Pig: 100%, Rabbit: 100%, Rat: 100%, Zebrafish: 75%
Characteristics:	This is a rabbit polyclonal antibody against DLX5. It was validated on Western Blot using a cell lysate as a positive control.
Purification:	Affinity Purified

Target Details

Target:	DLX5
---------	------

Target Details

Alternative Name: [DLX5 \(DLX5 Products\)](#)

Background: DLX5 is a member of a homeobox transcription factor gene family similar to the Drosophila distal-less gene. This protein may play a role in bone development and fracture healing. Mutation in its gene, which is located in a tail-to-tail configuration with another member of the family on the long arm of chromosome 7, may be associated with split-hand/split-foot malformation. This gene encodes a member of a homeobox transcription factor gene family similar to the Drosophila distal-less gene. The encoded protein may play a role in bone development and fracture healing. Mutation in this gene, which is located in a tail-to-tail configuration with another member of the family on the long arm of chromosome 7, may be associated with split-hand/split-foot malformation. Publication Note: This RefSeq record includes a subset of the publications that are available for this gene. Please see the Entrez Gene record to access additional publications.

Alias Symbols: SHFM1D

Protein Interaction Partner: UBC, SOX8, SPEN, NCOA2, SOX10, MAGED1, MSX2, MSX1, HOXC8, DLX5, DLX2,

Protein Size: 289

Molecular Weight: 32 kDa

Gene ID: 1749

NCBI Accession: [NM_005221](#), [NP_005212](#)

UniProt: [P56178](#)

Application Details

Application Notes: Optimal working dilutions should be determined experimentally by the investigator.

Comment: Antigen size: 289 AA

Restrictions: For Research Use only

Handling

Format: Liquid

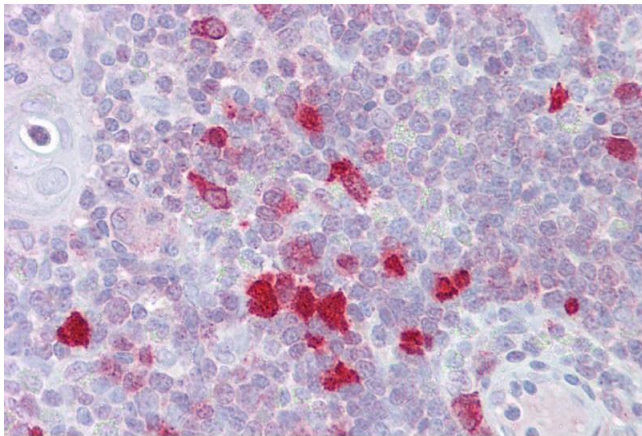
Concentration: Lot specific

Buffer: Liquid. Purified antibody supplied in 1x PBS buffer with 0.09 % (w/v) sodium azide and 2 % sucrose.

Handling

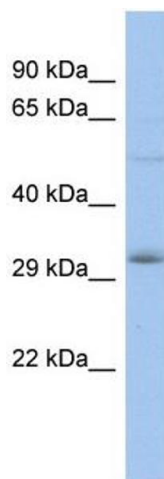
Preservative:	Sodium azide
Precaution of Use:	This product contains Sodium azide: a POISONOUS AND HAZARDOUS SUBSTANCE which should be handled by trained staff only.
Handling Advice:	Avoid repeated freeze-thaw cycles.
Storage:	-20 °C
Storage Comment:	For short term use, store at 2-8°C up to 1 week. For long term storage, store at -20°C in small aliquots to prevent freeze-thaw cycles.

Images



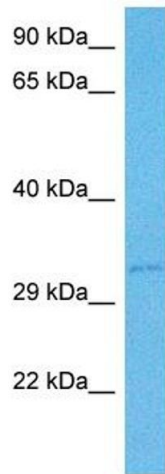
Immunohistochemistry

Image 1. Immunohistochemistry with Thymus tissue at an antibody concentration of 5µg/ml using anti-DLX5 antibody (ARP31607_P050)



Western Blotting

Image 2. WB Suggested Anti-DLX5 Antibody Titration: 0.2-1 ug/ml ELISA Titer: 1:312500 Positive Control: THP-1 cell lysate



Western Blotting

Image 3. Host: Mouse Target Name: DLX5 Sample Tissue: Mouse Pancreas Antibody Dilution: 1ug/ml