

Datasheet for ABIN2777377  
**anti-SLC26A3 antibody (Middle Region)**



[Go to Product page](#)

5 Images

1 Publication

### Overview

Quantity:	100 µL
Target:	SLC26A3
Binding Specificity:	Middle Region
Reactivity:	Human, Mouse, Rat, Cow, Dog, Guinea Pig, Pig, Rabbit, Sheep
Host:	Rabbit
Clonality:	Polyclonal
Conjugate:	This SLC26A3 antibody is un-conjugated
Application:	Western Blotting (WB), Immunohistochemistry (IHC)

### Product Details

Immunogen:	The immunogen is a synthetic peptide directed towards the middle region of human SLC26A3
Sequence:	DAVLHILMKK DYSTSKFNPS QEKDGKIDFT INTNGGLRNR VYEVVETKF
Predicted Reactivity:	Cow: 100%, Dog: 79%, Guinea Pig: 79%, Human: 100%, Mouse: 93%, Pig: 100%, Rabbit: 86%, Rat: 93%, Sheep: 100%
Characteristics:	This is a rabbit polyclonal antibody against SLC26A3. It was validated on Western Blot using a cell lysate as a positive control.
Purification:	Affinity Purified

### Target Details

Target:	SLC26A3
---------	---------

## Target Details

---

Alternative Name:	SLC26A3 ( <a href="#">SLC26A3 Products</a> )
Background:	<p>SLC26A3 is a transmembrane glycoprotein that transports chloride ions across the cell membrane in exchange for bicarbonate ions. It is localized to the mucosa of the lower intestinal tract, particularly to the apical membrane of columnar epithelium and some goblet cells. The protein is essential for intestinal chloride absorption, and mutations in this gene have been associated with congenital chloride diarrhea. The protein encoded by this gene is a transmembrane glycoprotein that functions as a sulfate transporter. It is localized to the mucosa of the lower intestinal tract, particularly to the apical membrane of columnar epithelium and some goblet cells. Mutations in this gene have been associated with congenital chloride diarrhea. Publication Note: This RefSeq record includes a subset of the publications that are available for this gene. Please see the Entrez Gene record to access additional publications.</p> <p>Alias Symbols: CLD, DRA</p> <p>Protein Interaction Partner: SLC9A3R1, SLC9A3R2,</p> <p>Protein Size: 764</p>
Molecular Weight:	84 kDa
Gene ID:	1811
NCBI Accession:	<a href="#">NM_000111</a> , <a href="#">NP_000102</a>
UniProt:	<a href="#">P40879</a>

## Application Details

---

Application Notes:	Optimal working dilutions should be determined experimentally by the investigator.
Comment:	Antigen size: 764 AA
Restrictions:	For Research Use only

## Handling

---

Format:	Liquid
Concentration:	Lot specific
Buffer:	Liquid. Purified antibody supplied in 1x PBS buffer with 0.09 % (w/v) sodium azide and 2 % sucrose.
Preservative:	Sodium azide

## Handling

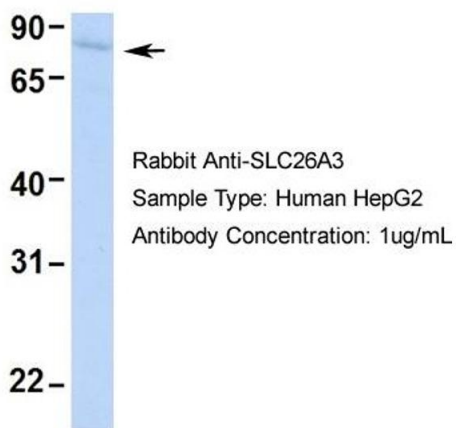
Precaution of Use:	This product contains Sodium azide: a POISONOUS AND HAZARDOUS SUBSTANCE which should be handled by trained staff only.
Handling Advice:	Avoid repeated freeze-thaw cycles.
Storage:	-20 °C
Storage Comment:	For short term use, store at 2-8°C up to 1 week. For long term storage, store at -20°C in small aliquots to prevent freeze-thaw cycles.

## Publications

Product cited in:	Lazrek, Goffard, Schanen, Karquel, Bocket, Lion, Devaux, Hedouin, Gosset, Hober: "Detection of hepatitis C virus antibodies and RNA among medicolegal autopsy cases in Northern France." in: <b>Diagnostic microbiology and infectious disease</b> , Vol. 55, Issue 1, pp. 55-8, (2006) ( <a href="#">PubMed</a> ).
-------------------	---

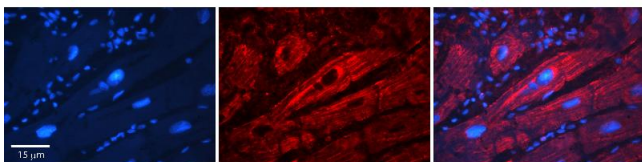
## Images

### SLC26A3



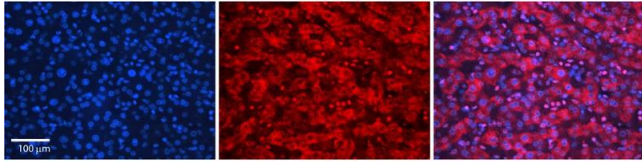
### Western Blotting

**Image 1.** Host: Rabbit Target Name: SLC26A3 Sample Type: HepG2 Antibody Dilution: 1.0ug/ml SLC26A3 is supported by BioGPS gene expression data to be expressed in HepG2



### Immunohistochemistry

**Image 2.** Rabbit Anti-SLC26A3 Antibody Catalog Number: ARP31608\_P050 Formalin Fixed Paraffin Embedded Tissue: Human Adult heart Observed Staining: Membrane Primary Antibody Concentration: 1:100 Secondary Antibody: Donkey anti-Rabbit-Cy2/3 Secondary Antibody Concentration: 1:200 Magnification: 20X Exposure Time: 0.5 – 2.0 sec Protocol located in Reviews and Data.



### Immunohistochemistry

**Image 3.** Rabbit Anti-SLC26A3 Antibody Catalog Number: ARP31608\_P050 Formalin Fixed Paraffin Embedded Tissue: Human Adult liver Observed Staining: Cytoplasmic,Nuclear Primary Antibody Concentration: 1:600 Secondary Antibody: Donkey anti-Rabbit-Cy2/3 Secondary Antibody Concentration: 1:200 Magnification: 20X Exposure Time: 0.5 – 2.0 sec Protocol located in Reviews and Data.

Please check the [product details page](#) for more images. Overall 5 images are available for ABIN2777377.