

Datasheet for ABIN2777378
anti-E2F2 antibody (Middle Region)[Go to Product page](#)[1 Image](#)[1 Publication](#)

Overview

Quantity:	100 µL
Target:	E2F2
Binding Specificity:	Middle Region
Reactivity:	Human, Mouse, Rat, Rabbit, Dog, Cow, Guinea Pig, Horse
Host:	Rabbit
Clonality:	Polyclonal
Conjugate:	This E2F2 antibody is un-conjugated
Application:	Western Blotting (WB)

Product Details

Immunogen:	The immunogen is a synthetic peptide directed towards the middle region of human E2F2
Sequence:	QWVGRGMFED PTRPGKQQQL GQELKELMNT EQALDQLIQS CSLSFKHLTE
Predicted Reactivity:	Cow: 100%, Dog: 100%, Guinea Pig: 93%, Horse: 100%, Human: 100%, Mouse: 90%, Rabbit: 86%, Rat: 93%
Characteristics:	This is a rabbit polyclonal antibody against E2F2. It was validated on Western Blot using a cell lysate as a positive control.
Purification:	Affinity Purified

Target Details

Target:	E2F2
---------	------

Target Details

Alternative Name:	E2F2 (E2F2 Products)
Background:	<p>E2F2 is a member of the E2F family of transcription factors. The E2F family plays a crucial role in the control of cell cycle and action of tumor suppressor proteins and is also a target of the transforming proteins of small DNA tumor viruses. The E2F pro</p> <p>Alias Symbols: E2F-2</p> <p>Protein Interaction Partner: RB1, GNB5, GIT2, TFDP1, RBL1, ARID3A, ELAVL1, ATAD2, KMT2D, KMT2A, RYBP, SETD8, BCAR1, TFDP2, BRD2, YY1, SP1, CDK3, RNF144A, FHL2, SPIB, RBL2, E2F4, MYBL2, EAPP, TP53BP2, PPP1R13B, TP53INP1, JMY, GAB2, CDC25A, CDC6, E2F1, UXT, MT1G,</p> <p>Protein Size: 437</p>
Molecular Weight:	48 kDa
Gene ID:	1870
NCBI Accession:	NM_004091 , NP_004082
UniProt:	Q14209
Pathways:	Cell Division Cycle , Mitotic G1-G1/S Phases , DNA Replication

Application Details

Application Notes:	Optimal working dilutions should be determined experimentally by the investigator.
Comment:	Antigen size: 437 AA
Restrictions:	For Research Use only

Handling

Format:	Liquid
Concentration:	Lot specific
Buffer:	Liquid. Purified antibody supplied in 1x PBS buffer with 0.09 % (w/v) sodium azide and 2 % sucrose.
Preservative:	Sodium azide
Precaution of Use:	This product contains Sodium azide: a POISONOUS AND HAZARDOUS SUBSTANCE which should be handled by trained staff only.
Handling Advice:	Avoid repeated freeze-thaw cycles.

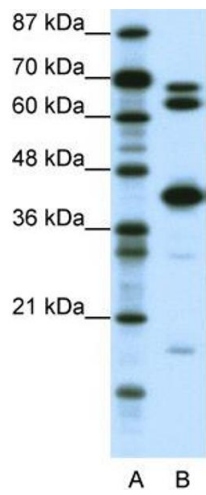
Handling

Storage:	-20 °C
Storage Comment:	For short term use, store at 2-8°C up to 1 week. For long term storage, store at -20°C in small aliquots to prevent freeze-thaw cycles.

Publications

Product cited in:	Timmusk, Merlot, Lövgren, Järvekülg, Berg, Fossum: "Regulator of G protein signalling 16 is a target for a porcine circovirus type 2 protein." in: The Journal of general virology , Vol. 90, Issue Pt 10, pp. 2425-36, (2009) (PubMed).
-------------------	---

Images



Western Blotting

Image 1. WB Suggested Anti-E2F2 Antibody Titration: 0.2-1 ug/ml ELISA Titer: 1:312500 Positive Control: Jurkat cell lysate E2F2 is supported by BioGPS gene expression data to be expressed in Jurkat