

Datasheet for ABIN2777379
anti-EBF1 antibody (N-Term)

3 Images

[Go to Product page](#)

Overview

Quantity:	100 µL
Target:	EBF1
Binding Specificity:	N-Term
Reactivity:	Human, Mouse, Rat, Rabbit, Cow, Horse, Zebrafish (Danio rerio), Dog, Guinea Pig
Host:	Rabbit
Clonality:	Polyclonal
Conjugate:	This EBF1 antibody is un-conjugated
Application:	Western Blotting (WB)

Product Details

Immunogen:	The immunogen is a synthetic peptide directed towards the N terminal region of human EBF1
Sequence:	MCRVLLTHEI MCSRCCDKKS CGNRNETPSD PVIIDRFFLK FFLKCNQNCL
Predicted Reactivity:	Cow: 100%, Dog: 100%, Guinea Pig: 100%, Horse: 100%, Human: 100%, Mouse: 100%, Rabbit: 100%, Rat: 100%, Zebrafish: 100%
Characteristics:	This is a rabbit polyclonal antibody against EBF1. It was validated on Western Blot using a cell lysate as a positive control.
Purification:	Affinity Purified

Target Details

Target:	EBF1
---------	------

Target Details

Alternative Name:	EBF1 (EBF1 Products)
Background:	<p>EBF1 belongs to the COE family. It contains 1 IPT/TIG domain. EBF1 is a transcriptional activator which recognizes variations of the palindromic sequence 5'-ATTCCCNNGGAATT-3'.</p> <p>Alias Symbols: COE1, EBF, O/E-1, OLF1</p> <p>Protein Interaction Partner: ATPAF2, HOMEZ, BCL6, ZNF521, ZNF423, CREBBP, PAX5, EBF1,</p> <p>Protein Size: 591</p>
Molecular Weight:	64 kDa
Gene ID:	1879
NCBI Accession:	NM_024007 , NP_076870
UniProt:	Q9UH73

Application Details

Application Notes:	Optimal working dilutions should be determined experimentally by the investigator.
Comment:	Antigen size: 591 AA
Restrictions:	For Research Use only

Handling

Format:	Liquid
Concentration:	Lot specific
Buffer:	Liquid. Purified antibody supplied in 1x PBS buffer with 0.09 % (w/v) sodium azide and 2 % sucrose.
Preservative:	Sodium azide
Precaution of Use:	This product contains Sodium azide: a POISONOUS AND HAZARDOUS SUBSTANCE which should be handled by trained staff only.
Handling Advice:	Avoid repeated freeze-thaw cycles.
Storage:	-20 °C
Storage Comment:	For short term use, store at 2-8°C up to 1 week. For long term storage, store at -20°C in small aliquots to prevent freeze-thaw cycles.

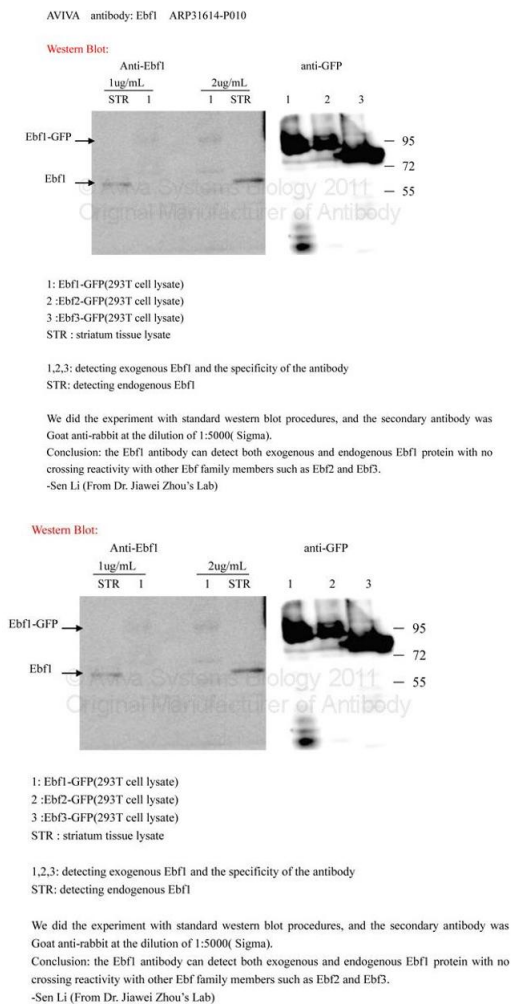
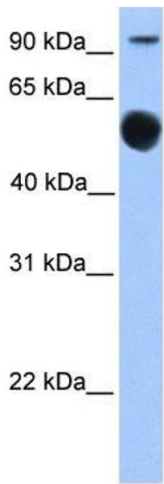


Image 1.

Western Blotting

Image 2. EBF1 antibody - N-terminal region validated by WB using striatum tissue lysate



Western Blotting

Image 3. WB Suggested Anti-EBF1 Antibody Titration: 0.2-1 ug/ml ELISA Titer: 1:312500 Positive Control: Human brain