

Datasheet for ABIN2777381 anti-SP7 antibody (C-Term)



[Go to Product page](#)

4 Images

1 Publication

Overview

Quantity:	100 µL
Target:	SP7
Binding Specificity:	C-Term
Reactivity:	Human, Mouse, Rat, Rabbit, Cow, Horse, Guinea Pig
Host:	Rabbit
Clonality:	Polyclonal
Conjugate:	This SP7 antibody is un-conjugated
Application:	Western Blotting (WB), Immunohistochemistry (IHC)

Product Details

Immunogen:	The immunogen is a synthetic peptide directed towards the C terminal region of human SP7
Sequence:	RTHGEPGPGP PPSGPKELGE GRSTGEEEAS QTPRPSASPA TPEKAPGGSP
Predicted Reactivity:	Cow: 100%, Guinea Pig: 93%, Horse: 93%, Human: 100%, Mouse: 92%, Rabbit: 86%, Rat: 93%
Characteristics:	This is a rabbit polyclonal antibody against SP7. It was validated on Western Blot and immunohistochemistry.
Purification:	Affinity Purified

Target Details

Target:	SP7
Alternative Name:	SP7 (SP7 Products)

Target Details

Background:	SP7 is a C2H2-type zinc finger transcription factor of the SP gene family and a putative master regulator of bone cell differentiation. Alias Symbols: OSX, OI11, OI12, osterix Protein Interaction Partner: UBC, Protein Size: 431
-------------	--

Molecular Weight:	45 kDa
-------------------	--------

Gene ID:	121340
----------	--------

NCBI Accession:	NM_152860 , NP_690599
-----------------	---

UniProt:	Q8TDD2
----------	------------------------

Application Details

Application Notes:	Optimal working dilutions should be determined experimentally by the investigator.
--------------------	--

Comment:	Antigen size: 431 AA
----------	----------------------

Restrictions:	For Research Use only
---------------	-----------------------

Handling

Format:	Liquid
---------	--------

Concentration:	Lot specific
----------------	--------------

Buffer:	Liquid. Purified antibody supplied in 1x PBS buffer with 0.09 % (w/v) sodium azide and 2 % sucrose.
---------	---

Preservative:	Sodium azide
---------------	--------------

Precaution of Use:	This product contains Sodium azide: a POISONOUS AND HAZARDOUS SUBSTANCE which should be handled by trained staff only.
--------------------	--

Handling Advice:	Avoid repeated freeze-thaw cycles.
------------------	------------------------------------

Storage:	-20 °C
----------	--------

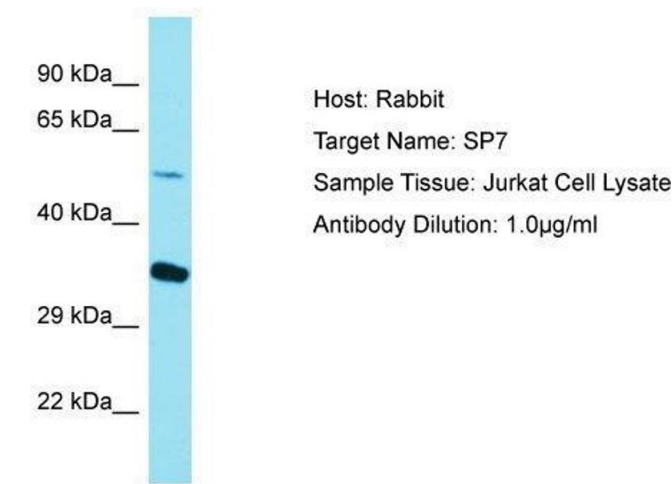
Storage Comment:	For short term use, store at 2-8°C up to 1 week. For long term storage, store at -20°C in small aliquots to prevent freeze-thaw cycles.
------------------	---

Publications

Product cited in:	Mells, Fu, Sharma, Olson, Cheng, Handy, Saxena, Sorescu, Anania: "Glp-1 analog, liraglutide,
-------------------	--

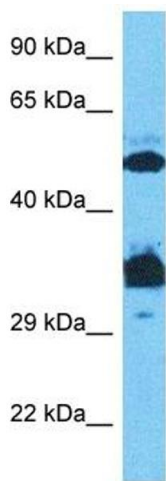
ameliorates hepatic steatosis and cardiac hypertrophy in C57BL/6J mice fed a Western diet."
in: **American journal of physiology. Gastrointestinal and liver physiology**, Vol. 302, Issue 2, pp.
G225-35, (2012) ([PubMed](#)).

Images



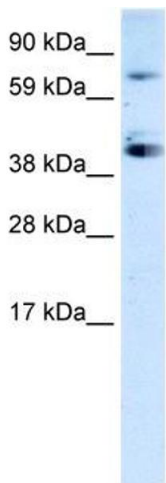
Western Blotting

Image 1. Host: Rabbit Target Name: SP7 Sample Type: Jurkat Whole Cell lysates Antibody Dilution: 1.0ug/ml



Western Blotting

Image 2. Host: Rabbit Target Name: SP7 Sample Type: Jurkat Whole Cell lysates Antibody Dilution: 0.5ug/ml



Western Blotting

Image 3. WB Suggested Anti-SP7 Antibody Titration: 0.2-1 ug/ml ELISA Titer: 1:1562500 Positive Control: Jurkat cell lysate

Images

Please check the [product details page](#) for more images. Overall 4 images are available for ABIN2777381.