

Datasheet for ABIN2777387
anti-ELF2 antibody (N-Term)

6 Images

[Go to Product page](#)

Overview

Quantity:	100 µL
Target:	ELF2
Binding Specificity:	N-Term
Reactivity:	Human, Mouse, Rat, Dog, Cow, Guinea Pig, Horse, Rabbit
Host:	Rabbit
Clonality:	Polyclonal
Conjugate:	This ELF2 antibody is un-conjugated
Application:	Western Blotting (WB)

Product Details

Immunogen:	The immunogen is a synthetic peptide directed towards the N terminal region of human ELF2
Sequence:	TSPDSHEPMK KKKVGRKPKT QQSPISNGSP ELGIKKKPRE GKGNTTYLWE
Predicted Reactivity:	Cow: 100%, Dog: 100%, Guinea Pig: 100%, Horse: 100%, Human: 100%, Mouse: 100%, Rabbit: 100%, Rat: 100%
Characteristics:	This is a rabbit polyclonal antibody against ELF2. It was validated on Western Blot using a cell lysate as a positive control.
Purification:	Affinity Purified

Target Details

Target:	ELF2
---------	------

Target Details

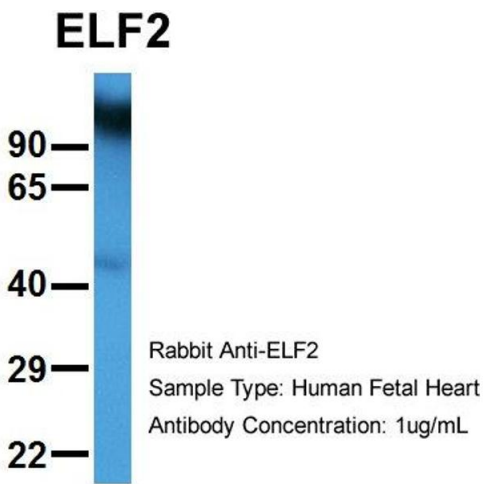
Alternative Name:	ELF2 (ELF2 Products)
Background:	<p>The ELF2 gene encodes a protein that physically interacts with AML1 and mediates opposing effects on AML1-mediated transcription of the B cell-specific blk gene.</p> <p>Alias Symbols: EU32, NERF, NERF-2, NERF-1A, NERF-1B, NERF-1a,b</p> <p>Protein Interaction Partner: UBC, APP, ELAVL1, SUMO2, BAP1, ZBTB32, LMO2, EIF2AK2, RUNX1,</p> <p>Protein Size: 533</p>
Molecular Weight:	57 kDa
Gene ID:	1998
NCBI Accession:	NM_006874 , NP_006865

Application Details

Application Notes:	Optimal working dilutions should be determined experimentally by the investigator.
Comment:	Antigen size: 533 AA
Restrictions:	For Research Use only

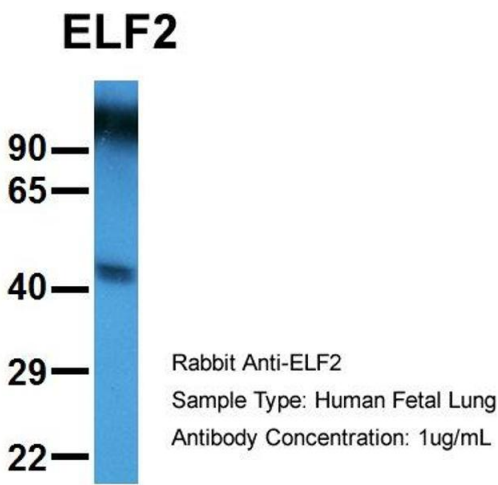
Handling

Format:	Liquid
Concentration:	Lot specific
Buffer:	Liquid. Purified antibody supplied in 1x PBS buffer with 0.09 % (w/v) sodium azide and 2 % sucrose.
Preservative:	Sodium azide
Precaution of Use:	This product contains Sodium azide: a POISONOUS AND HAZARDOUS SUBSTANCE which should be handled by trained staff only.
Handling Advice:	Avoid repeated freeze-thaw cycles.
Storage:	-20 °C
Storage Comment:	For short term use, store at 2-8°C up to 1 week. For long term storage, store at -20°C in small aliquots to prevent freeze-thaw cycles.



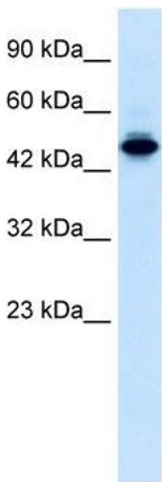
Western Blotting

Image 1. Host: Rabbit Target Name: ELF2 Sample Type: Human Fetal Heart Antibody Dilution: 1.0ug/ml



Western Blotting

Image 2. Host: Rabbit Target Name: ELF2 Sample Type: Human Fetal Lung Antibody Dilution: 1.0ug/ml



Western Blotting

Image 3. WB Suggested Anti-ELF2 Antibody Titration: 0.2-1 ug/ml ELISA Titer: 1:12500 Positive Control: Jurkat cell lysate

Please check the [product details page](#) for more images. Overall 6 images are available for ABIN2777387.