

Datasheet for ABIN2777391
anti-EMX2 antibody (N-Term)[Go to Product page](#)

3 Images

Overview

Quantity:	100 µL
Target:	EMX2
Binding Specificity:	N-Term
Reactivity:	Human, Mouse, Rat, Dog, Rabbit, Cow, Guinea Pig, Zebrafish (Danio rerio)
Host:	Rabbit
Clonality:	Polyclonal
Conjugate:	This EMX2 antibody is un-conjugated
Application:	Western Blotting (WB), Immunohistochemistry (IHC)

Product Details

Immunogen:	The immunogen is a synthetic peptide directed towards the N-terminal region of Human EMX2
Sequence:	ESLVAKDSPL PASRSEDPIR PAALSYANSS PINPFLNGFH SAAAAAAGRG
Predicted Reactivity:	Cow: 100%, Dog: 100%, Guinea Pig: 100%, Human: 100%, Mouse: 100%, Rabbit: 100%, Rat: 100%, Zebrafish: 92%
Characteristics:	This is a rabbit polyclonal antibody against EMX2. It was validated on Western Blot.
Purification:	Affinity Purified

Target Details

Target:	EMX2
Alternative Name:	EMX2 (EMX2 Products)

Target Details

Background:	<p>The homeodomain transcription factor EMX2 is critical for central nervous system and urogenital development. EMX1 along with EMX2 is related to the 'empty spiracles' gene expressed in the developing Drosophila head.</p> <p>Alias Symbols: -</p> <p>Protein Interaction Partner: GTF2A1L, TLE2, MEIS1, EIF4E,</p> <p>Protein Size: 252</p>
-------------	--

Molecular Weight:	28 kDa
-------------------	--------

Gene ID:	2018
----------	------

NCBI Accession:	NM_004098 , NP_004089
-----------------	---

UniProt:	Q04743
----------	------------------------

Application Details

Application Notes:	Optimal working dilutions should be determined experimentally by the investigator.
--------------------	--

Comment:	Antigen size: 252 AA
----------	----------------------

Restrictions:	For Research Use only
---------------	-----------------------

Handling

Format:	Liquid
---------	--------

Concentration:	Lot specific
----------------	--------------

Buffer:	Liquid. Purified antibody supplied in 1x PBS buffer with 0.09 % (w/v) sodium azide and 2 % sucrose.
---------	---

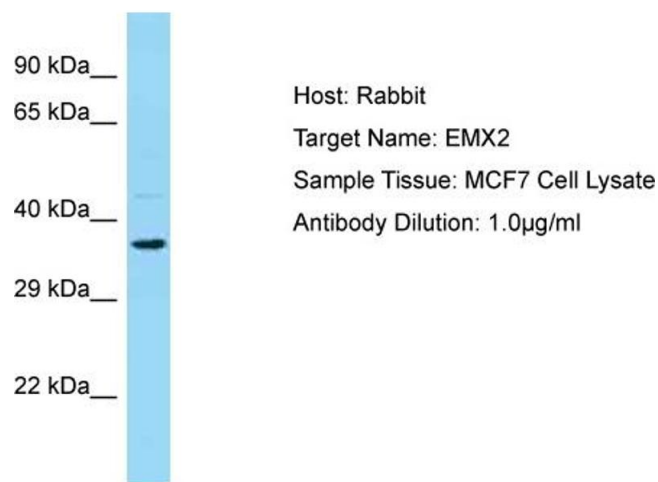
Preservative:	Sodium azide
---------------	--------------

Precaution of Use:	This product contains Sodium azide: a POISONOUS AND HAZARDOUS SUBSTANCE which should be handled by trained staff only.
--------------------	--

Handling Advice:	Avoid repeated freeze-thaw cycles.
------------------	------------------------------------

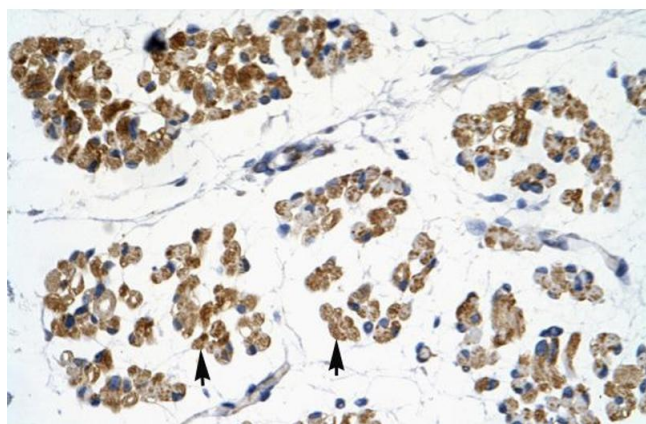
Storage:	-20 °C
----------	--------

Storage Comment:	For short term use, store at 2-8°C up to 1 week. For long term storage, store at -20°C in small aliquots to prevent freeze-thaw cycles.
------------------	---



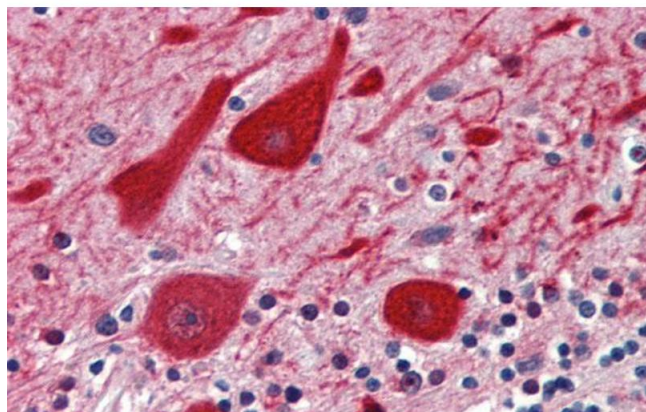
Western Blotting

Image 1. WB Suggested Anti-EMX2 Antibody Titration: 0.2-1 ug/ml ELISA Titer: 1:312500 Positive Control: HepG2 cell lysate



Immunohistochemistry

Image 2. Rabbit Anti-EMX2 Antibody Paraffin Embedded Tissue: Human Muscle Cellular Data: Skeletal muscle cells Antibody Concentration: 4.0-8.0 ug/ml Magnification: 400X



Immunohistochemistry

Image 3. Rabbit Anti-EMX2 Antibody Paraffin Embedded Tissue: Human Brain, cerebellum Antibody Concentration: 5 ug/ml Magnification: 400X