

Datasheet for ABIN2777399
anti-ESRRB antibody (N-Term)[Go to Product page](#)

2 Images

Overview

Quantity:	100 µL
Target:	ESRRB
Binding Specificity:	N-Term
Reactivity:	Human, Mouse, Rat, Horse, Dog, Cow, Guinea Pig, Rabbit
Host:	Rabbit
Clonality:	Polyclonal
Conjugate:	This ESRRB antibody is un-conjugated
Application:	Western Blotting (WB)

Product Details

Immunogen:	The immunogen is a synthetic peptide directed towards the N terminal region of human ESRRB
Sequence:	RHLGSSCGSF IKTEPSSPSS GIDALSHHSP SGSSDASGGF GLALGTHANG
Predicted Reactivity:	Cow: 100%, Dog: 100%, Guinea Pig: 100%, Horse: 100%, Human: 100%, Mouse: 100%, Rabbit: 92%, Rat: 100%
Characteristics:	This is a rabbit polyclonal antibody against ESRRB. It was validated on Western Blot using a cell lysate as a positive control.
Purification:	Affinity Purified

Target Details

Target:	ESRRB
---------	-------

Target Details

Alternative Name:	ESRRB (ESRRB Products)
Background:	<p>ESRRB encodes a protein with similarity to the estrogen receptor. Its function is unknown, however, a similar protein in mouse plays an essential role in placental development. Sequence Note: The sequence AF094517.1 is from a chimeric clone. Only the ESRRB sequence was propagated into this RefSeq record.</p> <p>Alias Symbols: ERR2, ERRb, ERRbeta, ERRbeta-2, ESRL2, NR3B2, DFNB35</p> <p>Protein Interaction Partner: UBC, PARK2, DPF2, NRIP1, SP1, NCOA2, NCOA3,</p> <p>Protein Size: 500</p>
Molecular Weight:	56 kDa
Gene ID:	2103
NCBI Accession:	NM_004452 , NP_004443
UniProt:	O95718
Pathways:	Nuclear Receptor Transcription Pathway , Steroid Hormone Mediated Signaling Pathway , Stem Cell Maintenance

Application Details

Application Notes:	Optimal working dilutions should be determined experimentally by the investigator.
Comment:	Antigen size: 500 AA
Restrictions:	For Research Use only

Handling

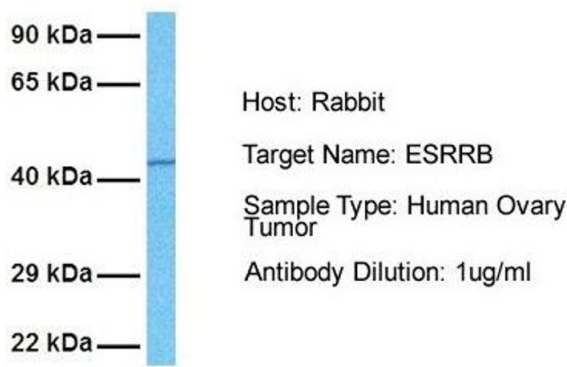
Format:	Liquid
Concentration:	Lot specific
Buffer:	Liquid. Purified antibody supplied in 1x PBS buffer with 0.09 % (w/v) sodium azide and 2 % sucrose.
Preservative:	Sodium azide
Precaution of Use:	This product contains Sodium azide: a POISONOUS AND HAZARDOUS SUBSTANCE which should be handled by trained staff only.
Handling Advice:	Avoid repeated freeze-thaw cycles.
Storage:	-20 °C

Handling

Storage Comment: For short term use, store at 2-8°C up to 1 week. For long term storage, store at -20°C in small aliquots to prevent freeze-thaw cycles.

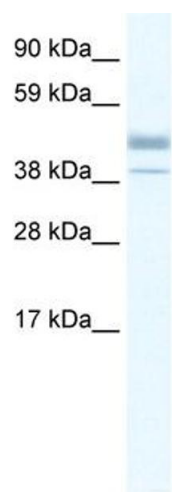
Images

ESRRB



Western Blotting

Image 1. Host: Rabbit Target Name: ESRRB Sample Tissue: Human Ovary Tumor Antibody Dilution: 1.0ug/ml



Western Blotting

Image 2. WB Suggested Anti-ESRRB Antibody Titration: 0.2-1 ug/ml ELISA Titer: 1:62500 Positive Control: Human kidney