

Datasheet for ABIN2777414  
**anti-KIN antibody (Middle Region)**[Go to Product page](#)

## 3 Images

## Overview

Quantity:	100 µL
Target:	KIN
Binding Specificity:	Middle Region
Reactivity:	Human, Rat, Cow, Dog, Rabbit, Guinea Pig, Horse
Host:	Rabbit
Clonality:	Polyclonal
Conjugate:	This KIN antibody is un-conjugated
Application:	Western Blotting (WB), Immunohistochemistry (IHC)

## Product Details

Immunogen:	The immunogen is a synthetic peptide directed towards the middle region of human KIN
Sequence:	LKTIGSSASV KRKESSQSST QSKEKKKKKS ALDEIMEIEE EKKRTARTDY
Predicted Reactivity:	Cow: 85%, Dog: 85%, Guinea Pig: 85%, Horse: 100%, Human: 100%, Rabbit: 85%, Rat: 85%
Characteristics:	This is a rabbit polyclonal antibody against KIN. It was validated on Western Blot and immunohistochemistry.
Purification:	Affinity Purified

## Target Details

Target:	KIN
Alternative Name:	KIN ( <a href="#">KIN Products</a> )

## Target Details

Background:	<p>Kin is a nuclear protein that forms intranuclear foci during proliferation and is redistributed in the nucleoplasm during the cell cycle. Short-wave ultraviolet light provokes the relocalization of the protein, suggesting its participation in the cellular response to DNA damage. Originally selected based on protein-binding with RecA antibodies, the mouse protein presents a limited similarity with a functional domain of the bacterial RecA protein, a characteristic shared by the human ortholog.</p> <p>Alias Symbols: BTCD, KIN17</p> <p>Protein Interaction Partner: UBC, HECW2, RPA1, PCNA, METTL22, Bud13, RPA2,</p> <p>Protein Size: 393</p>
Molecular Weight:	45 kDa
Gene ID:	22944
NCBI Accession:	<a href="#">NM_012311</a> , <a href="#">NP_036443</a>
UniProt:	<a href="#">O60870</a>

## Application Details

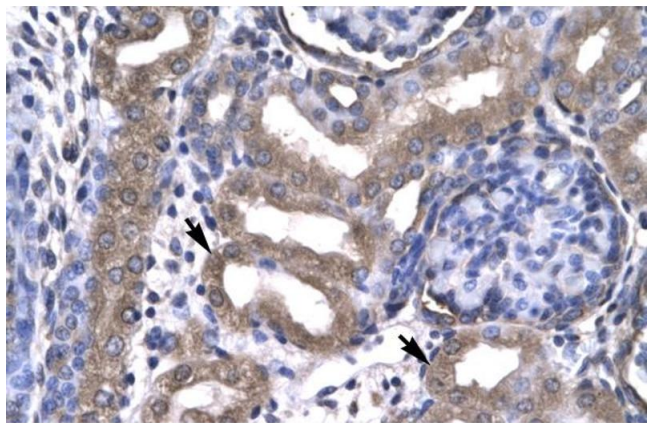
Application Notes:	Optimal working dilutions should be determined experimentally by the investigator.
Comment:	Antigen size: 393 AA
Restrictions:	For Research Use only

## Handling

Format:	Liquid
Concentration:	Lot specific
Buffer:	Liquid. Purified antibody supplied in 1x PBS buffer with 0.09 % (w/v) sodium azide and 2 % sucrose.
Preservative:	Sodium azide
Precaution of Use:	This product contains Sodium azide: a POISONOUS AND HAZARDOUS SUBSTANCE which should be handled by trained staff only.
Handling Advice:	Avoid repeated freeze-thaw cycles.
Storage:	-20 °C
Storage Comment:	For short term use, store at 2-8°C up to 1 week. For long term storage, store at -20°C in small

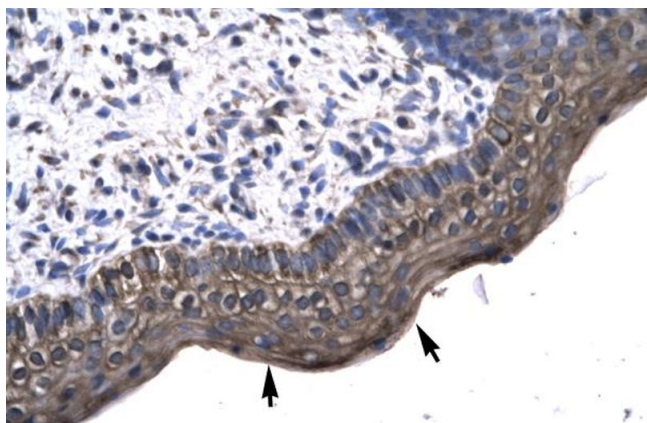
aliquots to prevent freeze-thaw cycles.

Images



Immunohistochemistry

**Image 1.** Human kidney



Immunohistochemistry

**Image 2.** Human Spermatophore



Western Blotting

**Image 3.** WB Suggested Anti-KIN Antibody Titration: 0.2-1 ug/ml ELISA Titer: 1:2500 Positive Control: HepG2 cell lysate  
KIN is supported by BioGPS gene expression data to be expressed in HepG2