

Datasheet for ABIN2777428
anti-SOX2 antibody (N-Term)[Go to Product page](#)

9 Images

2 Publications

Overview

Quantity:	100 µL
Target:	SOX2
Binding Specificity:	N-Term
Reactivity:	Human, Mouse, Rat, Goat, Pig, Cow, Zebrafish (Danio rerio), Sheep, Horse, Rabbit, Dog
Host:	Rabbit
Clonality:	Polyclonal
Conjugate:	This SOX2 antibody is un-conjugated
Application:	Western Blotting (WB), Immunohistochemistry (IHC)

Product Details

Immunogen:	The immunogen is a synthetic peptide directed towards the N terminal region of human SOX2
Sequence:	MYNMMETELK PPGPQQTSGG GGGNSTAAAA GGNQKNSPDR VKRPMNAFMV
Predicted Reactivity:	Cow: 100%, Dog: 100%, Goat: 100%, Horse: 100%, Human: 100%, Mouse: 100%, Pig: 100%, Rabbit: 100%, Rat: 100%, Sheep: 100%, Zebrafish: 91%
Characteristics:	This is a rabbit polyclonal antibody against SOX2. It was validated on Western Blot using a cell lysate as a positive control.
Purification:	Affinity Purified

Target Details

Target:	SOX2
---------	------

Target Details

Alternative Name: SOX2 ([SOX2 Products](#))

Background: SOX2 is a member of the SRY-related HMG-box (SOX) family of transcription factors involved in the regulation of embryonic development and in the determination of cell fate. The protein may act as a transcriptional activator after forming a protein complex with other proteins. Mutations in this gene have been associated with bilateral anophthalmia, a severe form of structural eye malformation. This intronless gene encodes a member of the SRY-related HMG-box (SOX) family of transcription factors involved in the regulation of embryonic development and in the determination of cell fate. The product of this gene is required for stem-cell maintenance in the central nervous system, and also regulates gene expression in the stomach. Mutations in this gene have been associated with optic nerve hypoplasia and with syndromic microphthalmia, a severe form of structural eye malformation. This gene lies within an intron of another gene called SOX2 overlapping transcript (SOX2OT). Publication Note: This RefSeq record includes a subset of the publications that are available for this gene. Please see the Entrez Gene record to access additional publications.

Alias Symbols: ANOP3, MCOPS3, MGC2413

Protein Interaction Partner: SUMO1, DMAP1, TBX2, SETD7, FAM21A, FZR1, MMS19, MRPS35, ZNF462, LSM2, CCAR2, MIER1, ZDBF2, CHD8, EP400, TSHZ3, RANBP10, ZNF687, XPO5, INTS2, MTA3, CORO1B, CASC5, MRPS22, KCMF1, MEPCE, TRERF1, INTS9, PARVA, SCYL2, CHD7, ZCCHC8, SOX6, BRX1, SAMD4B, GID8, C

Protein Size: 317

Molecular Weight: 34 kDa

Gene ID: 6657

NCBI Accession: [NM_003106](#), [NP_003097](#)

UniProt: [P48431](#)

Pathways: [Dopaminergic Neurogenesis](#), [Sensory Perception of Sound](#), [Stem Cell Maintenance](#), [Cell RedoxHomeostasis](#)

Application Details

Application Notes: Optimal working dilutions should be determined experimentally by the investigator.

Comment: Antigen size: 317 AA

Restrictions: For Research Use only

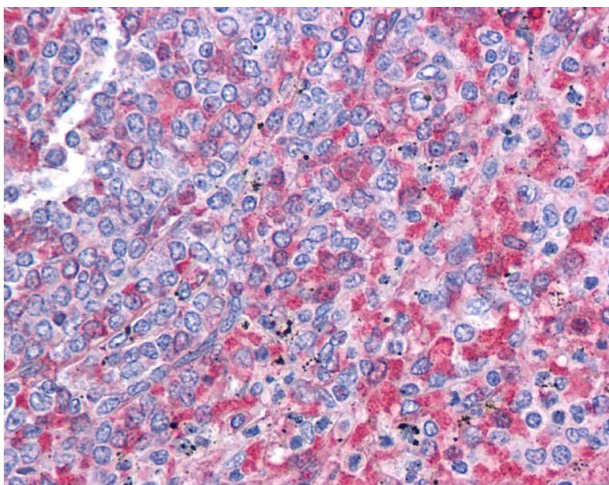
Handling

Format:	Liquid
Concentration:	Lot specific
Buffer:	Liquid. Purified antibody supplied in 1x PBS buffer with 0.09 % (w/v) sodium azide and 2 % sucrose.
Preservative:	Sodium azide
Precaution of Use:	This product contains Sodium azide: a POISONOUS AND HAZARDOUS SUBSTANCE which should be handled by trained staff only.
Handling Advice:	Avoid repeated freeze-thaw cycles.
Storage:	-20 °C
Storage Comment:	For short term use, store at 2-8°C up to 1 week. For long term storage, store at -20°C in small aliquots to prevent freeze-thaw cycles.

Publications

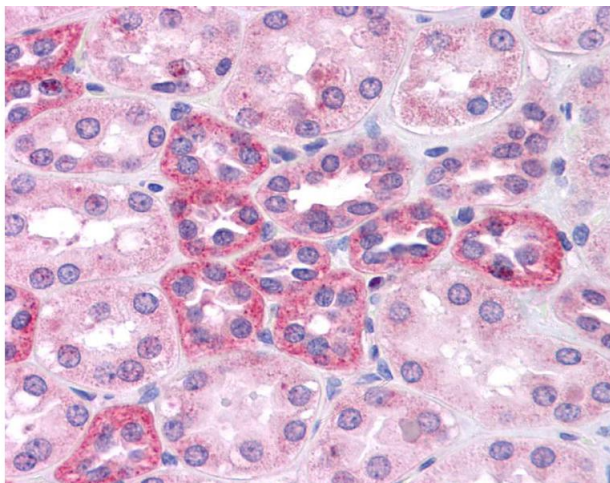
Product cited in:	Roberts, Childs, Brown, Davis, Booth: "Early depression of Ankrd2 and Csrp3 mRNAs in the polyribosomal and whole tissue fractions in skeletal muscle with decreased voluntary running." in: Journal of applied physiology (Bethesda, Md. : 1985) , Vol. 112, Issue 8, pp. 1291-9, (2012) (PubMed).
-------------------	---

Images



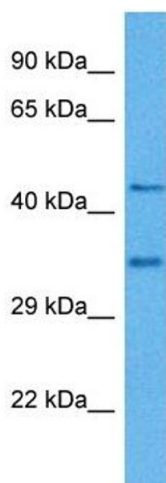
Immunohistochemistry

Image 1.



Immunohistochemistry

Image 2.



Western Blotting

Image 3. Host: Mouse Target Name: SOX2 Sample Tissue: Mouse Pancreas Antibody Dilution: 1ug/ml

Please check the [product details page](#) for more images. Overall 9 images are available for ABIN2777428.