

Datasheet for ABIN2777430
anti-TLR6 antibody (Middle Region)



[Go to Product page](#)

2 Images

Overview

Quantity:	100 µL
Target:	TLR6
Binding Specificity:	Middle Region
Reactivity:	Human, Goat, Sheep
Host:	Rabbit
Clonality:	Polyclonal
Conjugate:	This TLR6 antibody is un-conjugated
Application:	Western Blotting (WB), Immunohistochemistry (IHC)

Product Details

Immunogen:	The immunogen is a synthetic peptide directed towards the middle region of human TLR6
Sequence:	KCLVRVFQFL WPKPVEYLN IYNLTIIIESIR EEDFTYSKTT LKALTIEHIT
Predicted Reactivity:	Goat: 85%, Human: 100%, Sheep: 86%
Characteristics:	This is a rabbit polyclonal antibody against TLR6. It was validated on Western Blot and immunohistochemistry.
Purification:	Affinity Purified

Target Details

Target:	TLR6
Alternative Name:	TLR6 (TLR6 Products)

Target Details

Background:	<p>TLR6 is a member of the Toll-like receptor (TLR) family which plays a fundamental role in pathogen recognition and activation of innate immunity. TLRs are highly conserved from Drosophila to humans and share structural and functional similarities. They recognize pathogen-associated molecular patterns (PAMPs) that are expressed on infectious agents, and mediate the production of cytokines necessary for the development of effective immunity. The various TLRs exhibit different patterns of expression. This receptor functionally interacts with toll-like receptor 2 to mediate cellular response to bacterial lipoproteins.</p> <p>Alias Symbols: CD286</p> <p>Protein Interaction Partner: BTK, TRAP1, TLR2,</p> <p>Protein Size: 480</p>
Molecular Weight:	53 kDa
Gene ID:	10333
NCBI Accession:	NM_006068
UniProt:	Q2NKL3
Pathways:	TLR Signaling , Activation of Innate immune Response , Cellular Response to Molecule of Bacterial Origin , Toll-Like Receptors Cascades

Application Details

Application Notes:	Optimal working dilutions should be determined experimentally by the investigator.
Comment:	Antigen size: 480 AA
Restrictions:	For Research Use only

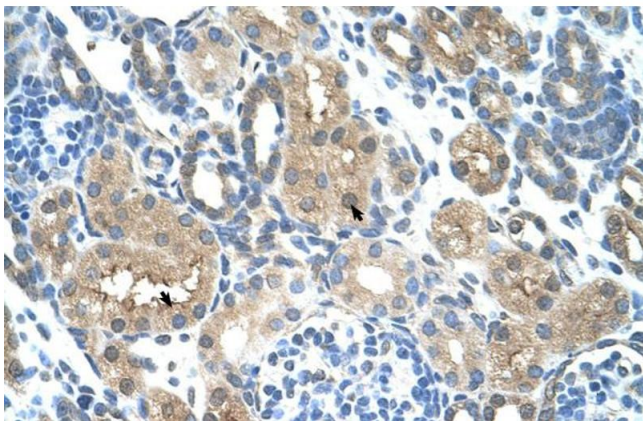
Handling

Format:	Liquid
Concentration:	Lot specific
Buffer:	Liquid. Purified antibody supplied in 1x PBS buffer with 0.09 % (w/v) sodium azide and 2 % sucrose.
Preservative:	Sodium azide
Precaution of Use:	This product contains Sodium azide: a POISONOUS AND HAZARDOUS SUBSTANCE which should be handled by trained staff only.
Handling Advice:	Avoid repeated freeze-thaw cycles.

Handling

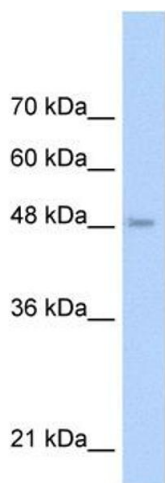
Storage:	-20 °C
Storage Comment:	For short term use, store at 2-8°C up to 1 week. For long term storage, store at -20°C in small aliquots to prevent freeze-thaw cycles.

Images



Immunohistochemistry

Image 1. Human kidney



Western Blotting

Image 2. WB Suggested Anti-TLR6 Antibody Titration: 0.2-1 ug/ml ELISA Titer: 1:12500 Positive Control: Jurkat cell lysate