

Datasheet for ABIN2777441
anti-RYBP antibody (Middle Region)

3 Images

[Go to Product page](#)

Overview

Quantity:	100 µL
Target:	RYBP
Binding Specificity:	Middle Region
Reactivity:	Human, Mouse, Rat, Cow, Dog, Guinea Pig, Horse, Rabbit
Host:	Rabbit
Clonality:	Polyclonal
Conjugate:	This RYBP antibody is un-conjugated
Application:	Western Blotting (WB), Immunohistochemistry (IHC)

Product Details

Immunogen:	The immunogen is a synthetic peptide directed towards the middle region of human RYBP
Sequence:	ATPPPPKKEK KEKVEKQDKE KPEKDKEISP SVTKKNTNKK TKPKSDILKD
Predicted Reactivity:	Cow: 100%, Dog: 100%, Guinea Pig: 100%, Horse: 100%, Human: 100%, Mouse: 93%, Rabbit: 100%, Rat: 100%
Characteristics:	This is a rabbit polyclonal antibody against RYBP. It was validated on Western Blot using a cell lysate as a positive control.
Purification:	Affinity Purified

Target Details

Target:	RYBP
---------	------

Target Details

Alternative Name:	RYBP (RYBP Products)
Background:	<p>RYBP contains 1 RanBP2-type zinc finger. RYBP may be implicated in the regulation of the transcription as a repressor of the transcriptional activity of E4TF1. In tumor cell lines, it may induce apoptosis.</p> <p>Alias Symbols: AAP1, DEDAF, YEAF1</p> <p>Protein Interaction Partner: RING1, EED, RNF2, BMI1, GABPB2, KDM2B, YY1, GABPB1, CSNK2A2, Dlg4, UBC, PCGF5, PCGF6, L3MBTL2, FBRS, BCORL1, FBRSL1, BCOR, RYBP, MGA, CBX3, WDR5, PCGF3, USP7, PCGF2, TFDP1, SKP1, E2F6, CSNK2B, PCGF1, CSNK2A1, ELAVL1, ZFP42, SOCS2, CBX2, FADD, CASP8, CASP1</p> <p>Protein Size: 228</p>
Molecular Weight:	25 kDa
Gene ID:	23429
NCBI Accession:	NM_012234 , NP_036366
UniProt:	Q8N488

Application Details

Application Notes:	Optimal working dilutions should be determined experimentally by the investigator.
Comment:	Antigen size: 228 AA
Restrictions:	For Research Use only

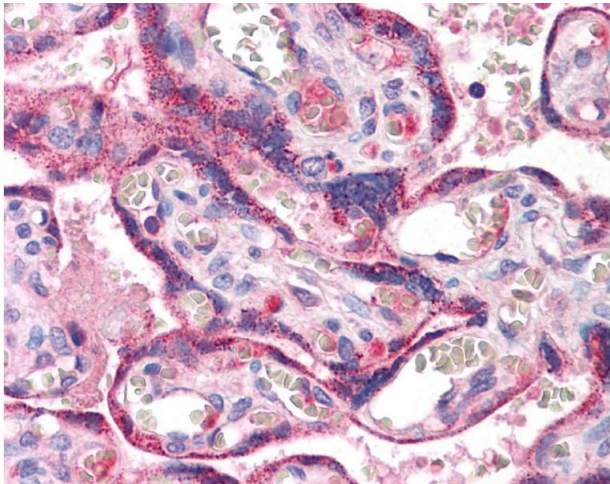
Handling

Format:	Liquid
Concentration:	Lot specific
Buffer:	Liquid. Purified antibody supplied in 1x PBS buffer with 0.09 % (w/v) sodium azide and 2 % sucrose.
Preservative:	Sodium azide
Precaution of Use:	This product contains Sodium azide: a POISONOUS AND HAZARDOUS SUBSTANCE which should be handled by trained staff only.
Handling Advice:	Avoid repeated freeze-thaw cycles.
Storage:	-20 °C

Handling

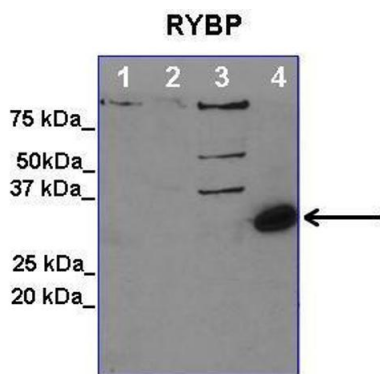
Storage Comment: For short term use, store at 2-8°C up to 1 week. For long term storage, store at -20°C in small aliquots to prevent freeze-thaw cycles.

Images



Immunohistochemistry

Image 1.



Western Blotting

Image 2. Lanes: 1. 50 ug 38B9 cell lysate, 2. 50 ug CH12 cell lysate, 3. 50 ug HeLa cell lysate 4. Purified RYBP Protein
Primary Antibody Dilution: 1:1000 Secondary Antibody: Anti-Rabbit HRP Secondary Antibody Dilution: 1:30000 Gene Name: RYBP Submitted by: Dr. Arimdam Basu, Dept. of Animal Biology, University of Pennsylvania

See Immunoblot 2 Data and Customer Feedback for more information



Western Blotting

Image 3. WB Suggested Anti-RYBP Antibody Titration: 0.2-1 ug/ml ELISA Titer: 1:62500 Positive Control: THP-1 cell lysate