

Datasheet for ABIN2777442

**anti-SEC14L2 antibody (Middle Region)****1** Image**1** Publication[Go to Product page](#)

## Overview

Quantity:	100 µL
Target:	SEC14L2
Binding Specificity:	Middle Region
Reactivity:	Human, Mouse, Rat, Dog, Cow, Guinea Pig, Horse, Rabbit
Host:	Rabbit
Clonality:	Polyclonal
Conjugate:	This SEC14L2 antibody is un-conjugated
Application:	Western Blotting (WB)

## Product Details

Immunogen:	The immunogen is a synthetic peptide directed towards the middle region of human SEC14L2
Sequence:	MTDPDGNPKC KSKINYGGDI PRKYVVRDQV KQQYEHSVQI SRGSSHQVEY
Predicted Reactivity:	Cow: 93%, Dog: 93%, Guinea Pig: 93%, Horse: 93%, Human: 100%, Mouse: 87%, Rabbit: 87%, Rat: 93%
Characteristics:	This is a rabbit polyclonal antibody against SEC14L2. It was validated on Western Blot using a cell lysate as a positive control.
Purification:	Affinity Purified

## Target Details

Target:	SEC14L2
---------	---------

## Target Details

Alternative Name:	SEC14L2 ( <a href="#">SEC14L2 Products</a> )
Background:	<p>SEC14L2 encodes a cytosolic protein which belongs to a family of lipid-binding proteins including Sec14p, alpha-tocopherol transfer protein, and cellular retinol-binding protein. The encoded protein stimulates squalene monooxygenase which is a downstream enzyme in the cholesterol biosynthetic pathway.</p> <p>Alias Symbols: SPF, TAP, TAP1, C22orf6</p> <p>Protein Interaction Partner: UBC, PIK3CG,</p> <p>Protein Size: 403</p>
Molecular Weight:	46 kDa
Gene ID:	23541
NCBI Accession:	<a href="#">NM_012429</a> , <a href="#">NP_036561</a>
UniProt:	<a href="#">O76054</a>

## Application Details

Application Notes:	Optimal working dilutions should be determined experimentally by the investigator.
Comment:	Antigen size: 403 AA
Restrictions:	For Research Use only

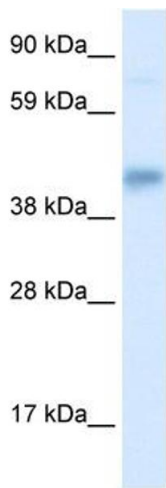
## Handling

Format:	Liquid
Concentration:	Lot specific
Buffer:	Liquid. Purified antibody supplied in 1x PBS buffer with 0.09 % (w/v) sodium azide and 2 % sucrose.
Preservative:	Sodium azide
Precaution of Use:	This product contains Sodium azide: a POISONOUS AND HAZARDOUS SUBSTANCE which should be handled by trained staff only.
Handling Advice:	Avoid repeated freeze-thaw cycles.
Storage:	-20 °C
Storage Comment:	For short term use, store at 2-8°C up to 1 week. For long term storage, store at -20°C in small aliquots to prevent freeze-thaw cycles.

Publications

Product cited in: Roberts, Childs, Brown, Davis, Booth: "Early depression of Ankrd2 and Csrp3 mRNAs in the polyribosomal and whole tissue fractions in skeletal muscle with decreased voluntary running." in: **Journal of applied physiology (Bethesda, Md. : 1985)**, Vol. 112, Issue 8, pp. 1291-9, (2012) ([PubMed](#)).

Images



**Western Blotting**

**Image 1.** WB Suggested Anti-SEC14L2 Antibody Titration: 0.2-1 ug/ml ELISA Titer: 1:7812500 Positive Control: Human Liver