

Datasheet for ABIN2777444
anti-SSBP2 antibody (N-Term)

6 Images

[Go to Product page](#)

Overview

Quantity:	100 µL
Target:	SSBP2
Binding Specificity:	N-Term
Reactivity:	Human, Mouse, Rat, Cow, Dog, Guinea Pig, Horse, Rabbit, Zebrafish (Danio rerio)
Host:	Rabbit
Clonality:	Polyclonal
Conjugate:	This SSBP2 antibody is un-conjugated
Application:	Western Blotting (WB), Immunohistochemistry (IHC)

Product Details

Immunogen:	The immunogen is a synthetic peptide directed towards the N terminal region of human SSBP2
Sequence:	YPGGPRPPLR IPNQALGGVP GSQPLLPSGM DPTRQQGHPN MGGPMQRMTF
Predicted Reactivity:	Cow: 100%, Dog: 100%, Guinea Pig: 100%, Horse: 100%, Human: 100%, Mouse: 100%, Rabbit: 100%, Rat: 100%, Zebrafish: 92%
Characteristics:	This is a rabbit polyclonal antibody against SSBP2. It was validated on Western Blot and immunohistochemistry.
Purification:	Affinity Purified

Target Details

Target:	SSBP2
---------	-------

Target Details

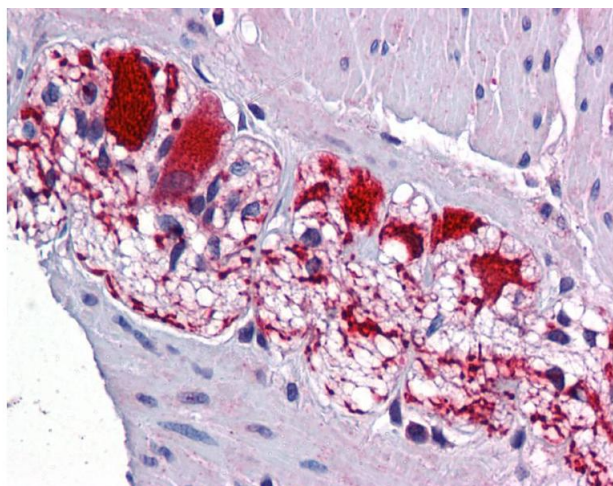
Alternative Name:	SSBP2 (SSBP2 Products)
Background:	<p>SSBP2 is a member of a closely related, evolutionarily conserved, and ubiquitously expressed gene family. It is also a potential tumor suppressor.</p> <p>Alias Symbols: DKFZp686F03273, HSPC116, SOSS-B2</p> <p>Protein Interaction Partner: LDB2, UBC, BAG3, TOM1, CDK6, DYRK2, TAL1, TRIM33, LMO2, IL36RN, LDB1, EWSR1,</p> <p>Protein Size: 361</p>
Molecular Weight:	38 kDa
Gene ID:	23635
NCBI Accession:	NM_012446 , NP_036578
UniProt:	P81877

Application Details

Application Notes:	Optimal working dilutions should be determined experimentally by the investigator.
Comment:	Antigen size: 361 AA
Restrictions:	For Research Use only

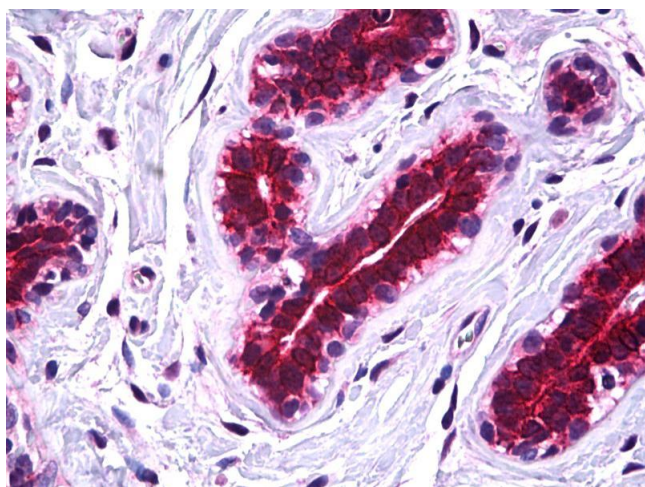
Handling

Format:	Liquid
Concentration:	Lot specific
Buffer:	Liquid. Purified antibody supplied in 1x PBS buffer with 0.09 % (w/v) sodium azide and 2 % sucrose.
Preservative:	Sodium azide
Precaution of Use:	This product contains Sodium azide: a POISONOUS AND HAZARDOUS SUBSTANCE which should be handled by trained staff only.
Handling Advice:	Avoid repeated freeze-thaw cycles.
Storage:	-20 °C
Storage Comment:	For short term use, store at 2-8°C up to 1 week. For long term storage, store at -20°C in small aliquots to prevent freeze-thaw cycles.



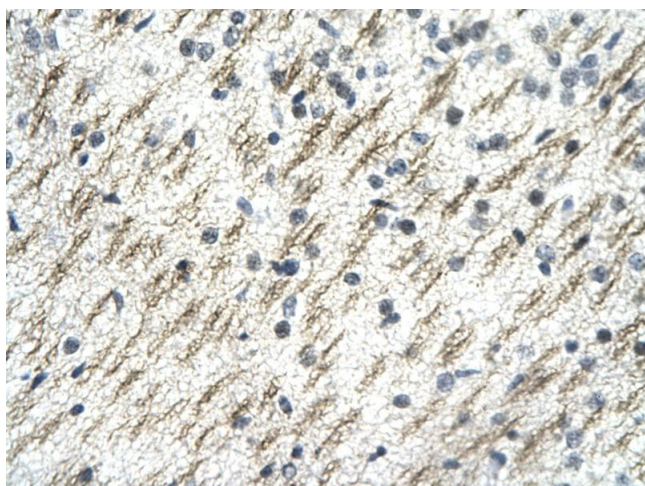
Immunohistochemistry

Image 1. Colon, myenteric plexus



Immunohistochemistry

Image 2. IHC Information: Paraffin embedded breast tissue, tested with an antibody dilution of 5 ug/ml.



Immunohistochemistry

Image 3. Rabbit Anti-SSBP2 antibody Catalog Number: ARP31828 Paraffin Embedded Tissue: Human Brain cell Cellular Data: Nerve fibre of renal tubule Antibody Concentration: 4.0-8.0 ug/ml Magnification: 400X

Please check the [product details page](#) for more images. Overall 6 images are available for ABIN2777444.