

Datasheet for ABIN2777461  
**anti-GATA6 antibody (Middle Region)**[Go to Product page](#)

3 Images

1 Publication

## Overview

Quantity:	100 µL
Target:	GATA6
Binding Specificity:	Middle Region
Reactivity:	Human, Mouse, Rat, Cow, Pig, Guinea Pig, Horse, Rabbit, Sheep
Host:	Rabbit
Clonality:	Polyclonal
Conjugate:	This GATA6 antibody is un-conjugated
Application:	Western Blotting (WB), Immunohistochemistry (IHC), Immunofluorescence (IF)

## Product Details

Immunogen:	The immunogen is a synthetic peptide directed towards the middle region of human GATA6
Sequence:	SGAGAPVMTG AGESTNPENS ELKYSQDGL YIGVSLASPA EVTSSVRPDS
Predicted Reactivity:	Cow: 86%, Guinea Pig: 85%, Horse: 100%, Human: 100%, Mouse: 79%, Pig: 93%, Rabbit: 93%, Rat: 86%, Sheep: 93%
Characteristics:	This is a rabbit polyclonal antibody against GATA6. It was validated on Western Blot using a cell lysate as a positive control.
Purification:	Affinity Purified

## Target Details

Target:	GATA6
---------	-------

## Target Details

Alternative Name:	GATA6 ( <a href="#">GATA6 Products</a> )
Background:	<p>GATA6 is thought to be important for regulating terminal differentiation and/or proliferation.</p> <p>Alias Symbols: ASD9, AVSD5, PACHD</p> <p>Protein Interaction Partner: KPNA3, SP1, CDK9, HHEX, MED1, EP300, CRIP2, NKX2-1, KLF2,</p> <p>Protein Size: 595</p>
Molecular Weight:	60 kDa
Gene ID:	2627
NCBI Accession:	<a href="#">NM_005257</a> , <a href="#">NP_005248</a>
UniProt:	<a href="#">Q92908</a>

## Application Details

Application Notes:	Optimal working dilutions should be determined experimentally by the investigator.
Comment:	Antigen size: 595 AA
Restrictions:	For Research Use only

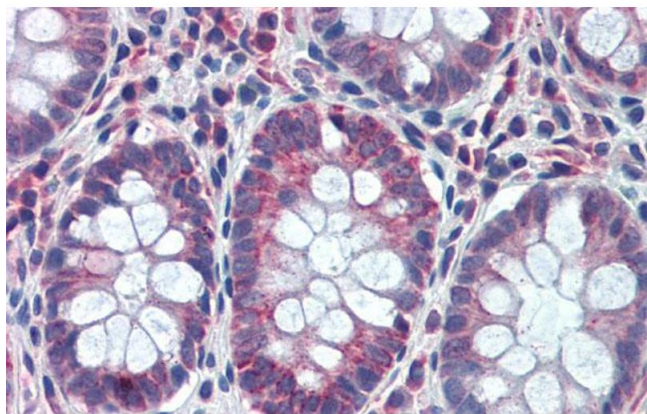
## Handling

Format:	Liquid
Concentration:	Lot specific
Buffer:	Liquid. Purified antibody supplied in 1x PBS buffer with 0.09 % (w/v) sodium azide and 2 % sucrose.
Preservative:	Sodium azide
Precaution of Use:	This product contains Sodium azide: a POISONOUS AND HAZARDOUS SUBSTANCE which should be handled by trained staff only.
Handling Advice:	Avoid repeated freeze-thaw cycles.
Storage:	-20 °C
Storage Comment:	For short term use, store at 2-8°C up to 1 week. For long term storage, store at -20°C in small aliquots to prevent freeze-thaw cycles.

## Publications

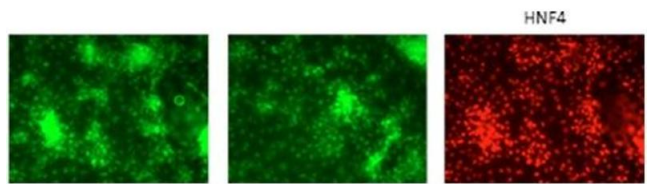
Product cited in:	Ursini, Cavalleri, Fazio, Angrisano, Iacovelli, Porcelli, Maddalena, Punzi, Mancini, Gelao, Romano,
-------------------	---

Masellis, Calabrese, Rampino, Taurisano, Di Giorgio, Keller, Tarantini, Sinibaldi, Quarto et al.: " BDNF rs6265 methylation and genotype interact on risk for schizophrenia. ..." in: **Epigenetics**, Vol. 11, Issue 1, pp. 11-23, (2016) ([PubMed](#)).



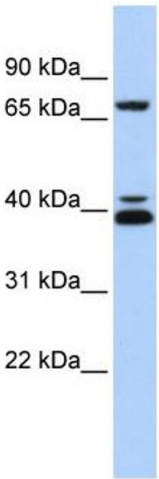
Immunohistochemistry

**Image 1.** Rabbit Anti-GATA6 Antibody Catalog Number: ARP31859 Paraffin Embedded Tissue: Human Colon Antibody Concentration: 5 ug/ml



Immunofluorescence

**Image 2.** The cells are human embryonic stem cell line H1 differentiated to HNF4 positive hepatic progenitor cells. The antibodies were used at a 1:250 dilution.



Western Blotting

**Image 3.** WB Suggested Anti-GATA6 Antibody Titration: 0.2-1 ug/ml ELISA Titer: 1:312500 Positive Control: MCF7 cell lysate